

## Product datasheet

# Anti-RNF22 antibody ab4215

★★★★★ 2 Abreviews 1 References 3 图像

### 概述

产品名称	Anti-RNF22抗体
描述	山羊多克隆抗体to RNF22
宿主	Goat
特异性	This antibody is expected to recognise both human isoforms.
经测试应用	适用于: IP, WB
种属反应性	与反应: Mouse, Rat, Human 预测可用于: Cow, Dog
免疫原	Synthetic peptide: AKREDSPGPEVQP-C , corresponding to N terminal amino acids 2-14 of Human RNF22 (Peptide available as <a href="#">ab23010</a> .)
	<a href="#">Run BLAST with</a> <a href="#">Run BLAST with</a>

### 性能

形式	Liquid
存放说明	Shipped at 4°C. Upon delivery aliquot and store at -20°C. Avoid freeze / thaw cycles.
存储溶液	Preservative: 0.02% Sodium Azide Constituents: 0.5% BSA, Tris buffered saline, pH 7.3
纯度	Immunogen affinity purified
纯化说明	Purified from goat serum by ammonium sulphate precipitation followed by antigen affinity chromatography using the immunizing peptide.
克隆	多克隆
同种型	IgG

### 应用

Our [Abpromise guarantee](#) covers the use of **ab4215** in the following tested applications.

The application notes include recommended starting dilutions; optimal dilutions/concentrations should be determined by the end user.

应用	Ab评论	说明
IP	★★★★★	
WB	★★★★★	

#### 应用说明

ELISA: Use at an assay dependent dilution.  
 IP: Use at an assay dependent dilution.  
 WB: Use at a concentration of 0.1 - 1 µg/ml. Approx 85kDa band seen in Mouse Brain and Human Brain (Cerebellum) lysate [Predicted MW of approx. 80.8kDa according to NP\_006449.2].

Not yet tested in other applications.  
 Optimal dilutions/concentrations should be determined by the end user.

#### 靶标

##### 功能

Probably involved in vesicular trafficking via its association with the CART complex. The CART complex is necessary for efficient transferrin receptor recycling but not for EGFR degradation.

##### 组织特异性

Expressed in brain, heart, uterus and testis.

##### 序列相似性

Belongs to the TRIM/RBCC family.  
 Contains 1 B box-type zinc finger.  
 Contains 1 filamin repeat.  
 Contains 6 NHL repeats.  
 Contains 1 RING-type zinc finger.

##### 结构域

The interaction with MYO5B is dependent upon its NHL repeats, which form a beta-propeller (NHL) domain containing six blades.

##### 细胞定位

Cytoplasm. Early endosome.

#### 图片



**All lanes :** Anti-RNF22 antibody (ab4215) at 0.3 µg/ml

**Lane 1 :** Human cerebellum lysate (RIPA Buffer)

**Lane 2 :** Rat brain lysate (RIPA Buffer)

Lysates/proteins at 35 µg per lane.

**Predicted band size:** 81 kDa



Western blot - Anti-RNF22 antibody (ab4215)

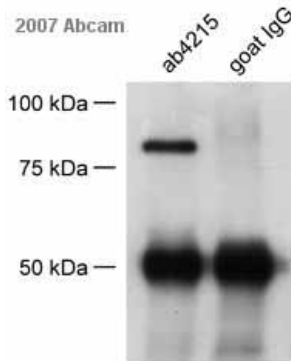
Anti-RNF22 antibody (ab4215) at 0.5 µg/ml + Mouse Brain (RIPA buffer) at 30 µg

**Predicted band size:** 81 kDa

**Observed band size:** 85 kDa

[why is the actual band size different from the predicted?](#)

Primary incubated for 1 hour. Detected by western blot using chemiluminescence.



Immunoprecipitation - Anti-RNF22 antibody (ab4215)

This image is courtesy of an Abreview submitted by Dr Christoph Maas

ab4215 immunoprecipitating RNF22 from rat brain tissue whole lysate. The antibody was used at a concentration of 2.5µg/mg of lysate. A Protein G matrix was used. The same antibody was used in the Western blot stage of the experiment (left hand panel).

**Please note:** All products are "FOR RESEARCH USE ONLY AND ARE NOT INTENDED FOR DIAGNOSTIC OR THERAPEUTIC USE"

## Our Abpromise to you: Quality guaranteed and expert technical support

- Replacement or refund for products not performing as stated on the datasheet
- Valid for 12 months from date of delivery
- Response to your inquiry within 24 hours
- We provide support in Chinese, English, French, German, Japanese and Spanish
- Extensive multi-media technical resources to help you
- We investigate all quality concerns to ensure our products perform to the highest standards

If the product does not perform as described on this datasheet, we will offer a refund or replacement. For full details of the Abpromise, please visit <https://www.abcam.cn/abpromise> or contact our technical team.

## Terms and conditions

- Guarantee only valid for products bought direct from Abcam or one of our authorized distributors