

## Product datasheet

# Anti-RACK1 antibody ab62735

★★★★☆ 1 Abreviews 4 References 1 图像

### 概述

<b>产品名称</b>	Anti-RACK1抗体
<b>描述</b>	兔多克隆抗体to RACK1
<b>宿主</b>	Rabbit
<b>经测试应用</b>	<b>适用于:</b> WB, IP, ICC/IF
<b>种属反应性</b>	<b>与反应:</b> Mouse, Rat, Human <b>预测可用于:</b> Chicken, Cow, Pig, Xenopus laevis, Cynomolgus monkey
<b>免疫原</b>	Synthetic peptide: TEQMTLRGT LKGHNG - C , conjugated to KLH by a C terminal Cysteine residue linker, corresponding to N terminal amino acids 2-16 of Human RACK1  <a href="#">Run BLAST with</a> <a href="#">Run BLAST with</a>
<b>阳性对照</b>	Paraformaldehyde-fixed HeLa cells, HEK-293T cell lysate.

### 性能

<b>形式</b>	Liquid
<b>存放说明</b>	Shipped at 4°C. Store at +4°C short term (1-2 weeks). Upon delivery aliquot. Store at -20°C or -80°C. Avoid freeze / thaw cycle.
<b>存储溶液</b>	Preservative: 15mM Sodium Azide Constituents: 0.01M PBS, pH 7.4
<b>纯度</b>	IgG fraction
<b>纯化说明</b>	The antiserum was fractionated and further purified by ion-exchange chromatography to provide the IgG fraction of antiserum that is essentially free of other rabbit serum proteins.
<b>克隆</b>	多克隆
<b>同种型</b>	IgG

### 应用

Our [Abpromise guarantee](#) covers the use of **ab62735** in the following tested applications.

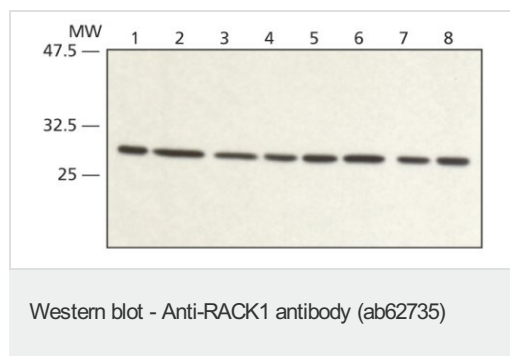
The application notes include recommended starting dilutions; optimal dilutions/concentrations should be determined by the end user.

应用	Ab评论	说明
WB	★★★★☆	1/500 - 1/1000. Detects a band of approximately 30 kDa (predicted molecular weight: 35 kDa).
IP		Use at an assay dependent dilution. Use 5-10 µL.
ICC/IF		1/100 - 1/200.

## 靶标

<b>功能</b>	Seems to bind protein kinase C acting as an intracellular receptor to anchor the activated PKC to the cytoskeleton. May be involved in up-regulation of the activity of kinases such as PKC via binding to KRT1. Together with KRT1 and ITGB1, serves as a platform for SRC activation or inactivation. May play an important role in the developing brain and neuronal differentiation.
<b>序列相似性</b>	Belongs to the WD repeat G protein beta family. Contains 7 WD repeats.
<b>结构域</b>	The WD repeats domain 5 mediates interaction with TRIM63.
<b>细胞定位</b>	Cell membrane. Located on plasma membrane of neuroblastoma NMB7 cells.

## 图片



**All lanes :** Anti-RACK1 antibody (ab62735)  
at 1/500 dilution

**Lane 1 :** Extract from hek-293T cell line

**Lane 2 :** Extract from HeLa cell line

**Lane 3 :** Extract from MCF7 cell line

**Lane 4 :** Extract from U2OS cell line

**Lane 5 :** Extract from Jurkat cell line

**Lane 6 :** Extract from RAT1 cell line

**Lane 7 :** Extract from PC12 cell line

**Lane 8 :** Extract from NIH3T3 cell line

### Secondary

**All lanes :** Goat Anti-Rabbit IgG

Developed using the ECL technique.

**Predicted band size:** 35 kDa

**Observed band size:** 30 kDa

**Please note:** All products are "FOR RESEARCH USE ONLY AND ARE NOT INTENDED FOR DIAGNOSTIC OR THERAPEUTIC USE"

## **Our Abpromise to you: Quality guaranteed and expert technical support**

---

- Replacement or refund for products not performing as stated on the datasheet
- Valid for 12 months from date of delivery
- Response to your inquiry within 24 hours
  
- We provide support in Chinese, English, French, German, Japanese and Spanish
- Extensive multi-media technical resources to help you
- We investigate all quality concerns to ensure our products perform to the highest standards

If the product does not perform as described on this datasheet, we will offer a refund or replacement. For full details of the Abpromise, please visit <https://www.abcam.cn/abpromise> or contact our technical team.

## **Terms and conditions**

---

- Guarantee only valid for products bought direct from Abcam or one of our authorized distributors