

Product datasheet

Anti-Protein kinase-like protein SgK493 antibody ab106413

3 图像

概述

产品名称	Anti-Protein kinase-like蛋白SgK493抗体
描述	兔多克隆抗体to蛋白kinase-like蛋白SgK493
宿主	Rabbit
特异性	At least two isoforms of Protein kinase-like protein SgK493 are known to exist; ab106413 will recognize both isoforms.
经测试应用	适用于: IHC-P, WB
种属反应性	与反应: Mouse, Rat, Human
免疫原	Synthetic peptide corresponding to Human Protein kinase-like protein SgK493 (internal sequence). Database link: <a href="#">Q5RJ4</a>
阳性对照	Human lung tissue lysate, Rat lung tissue

性能

形式	Liquid
存放说明	Shipped at 4°C. Store at +4°C short term (1-2 weeks). Upon delivery aliquot. Store at -20°C. Avoid freeze / thaw cycle.
存储溶液	Preservative: 0.02% Sodium azide Constituent: PBS
纯度	Immunogen affinity purified
克隆	多克隆
同种型	IgG

应用

Our [Abpromise guarantee](#) covers the use of **ab106413** in the following tested applications.

The application notes include recommended starting dilutions; optimal dilutions/concentrations should be determined by the end user.

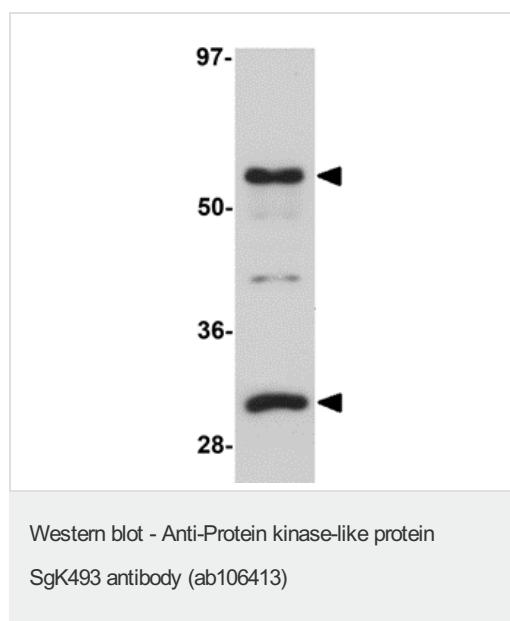
应用	Ab评论	说明
IHC-P		Use a concentration of 2.5 µg/ml.

应用	Ab评论	说明
WB		Use a concentration of 0.5 µg/ml. Predicted molecular weight: 54 kDa.

## 靶标

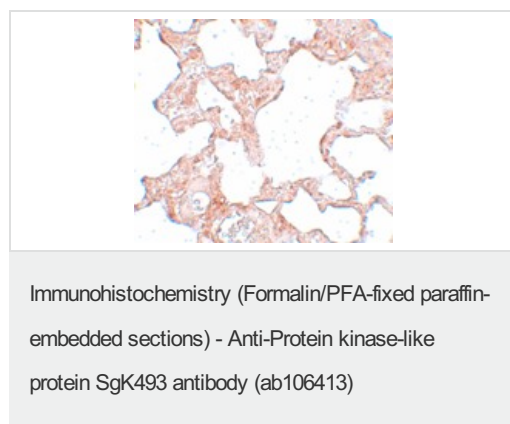
功能	Protein kinase which is required for longitudinal bone growth through regulation of chondrocyte differentiation. Involved in protein transport from the Golgi apparatus to the plasma membrane.
序列相似性	Belongs to the protein kinase superfamily. Contains 1 protein kinase domain.
细胞定位	Golgi apparatus.

## 图片

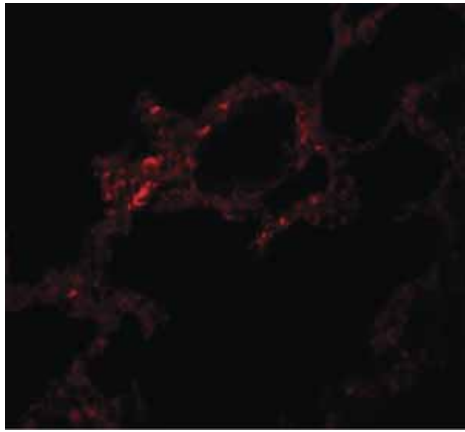


Anti-Protein kinase-like protein SgK493 antibody (ab106413) at 1 µg/ml + Human lung tissue lysate at 15 µg

**Predicted band size:** 54 kDa



ab106413, at 2.5 µg/ml, staining Protein kinase-like protein SgK493 in paraffin embedded Rat lung tissue.



Immunohistochemical analysis of rat lung tissue labelling Protein kinase-like protein SgK493 with ab106413 at 5 ug/mL.

Immunohistochemistry (Formalin/PFA-fixed paraffin-embedded sections) - Anti-Protein kinase-like protein SgK493 antibody (ab106413)

**Please note:** All products are "FOR RESEARCH USE ONLY AND ARE NOT INTENDED FOR DIAGNOSTIC OR THERAPEUTIC USE"

### Our Abpromise to you: Quality guaranteed and expert technical support

---

- Replacement or refund for products not performing as stated on the datasheet
- Valid for 12 months from date of delivery
- Response to your inquiry within 24 hours
- We provide support in Chinese, English, French, German, Japanese and Spanish
- Extensive multi-media technical resources to help you
- We investigate all quality concerns to ensure our products perform to the highest standards

If the product does not perform as described on this datasheet, we will offer a refund or replacement. For full details of the Abpromise, please visit <https://www.abcam.cn/abpromise> or contact our technical team.

### Terms and conditions

---

- Guarantee only valid for products bought direct from Abcam or one of our authorized distributors