

Product datasheet

Anti-Placental Protein 14 / Glycodelin A antibody [EP870Y] ab53289

 RabMAb

1 References 2 图像

概述

产品名称	Anti-Placental蛋白14 / Glycodelin A抗体[EP870Y]
描述	兔单克隆抗体[EP870Y] to Placental蛋白14 / Glycodelin A
宿主	Rabbit
经测试应用	适用于: WB
种属反应性	与反应: Human
免疫原	Synthetic peptide within Human Placental Protein 14/ Glycodelin A aa 150-250 (C terminal). The exact sequence is proprietary. Database link: P09466
阳性对照	WB: TPA-treated K562 cell lysate. Human placenta, kidney, and brain tissue lysates.
常规说明	Mouse, Rat: We have preliminary internal testing data to indicate this antibody may not react with these species. Please contact us for more information.

Our RabMAb[®] technology is a patented hybridoma-based technology for making rabbit monoclonal antibodies. For details on our patents, please refer to [RabMab[®] patents](#)

We are constantly working hard to ensure we provide our customers with best in class antibodies. As a result of this work we are pleased to now offer this antibody in purified format. We are in the process of updating our datasheets. The purified format is designated 'PUR' on our product labels. If you have any questions regarding this update, please contact our Scientific Support team.

This product is a recombinant rabbit monoclonal antibody.

性能

形式	Liquid
存放说明	Shipped at 4°C. Store at +4°C short term (1-2 weeks). Upon delivery aliquot. Store at -20°C long term. Avoid freeze / thaw cycle.
存储溶液	pH: 7.20 Preservative: 0.01% Sodium azide

Constituents: 59% PBS, 40% Glycerol, 0.05% BSA

纯度	Protein A purified
克隆	单克隆
克隆编号	EP870Y
同种型	IgG

应用

Our [Abpromise guarantee](#) covers the use of **ab53289** in the following tested applications.

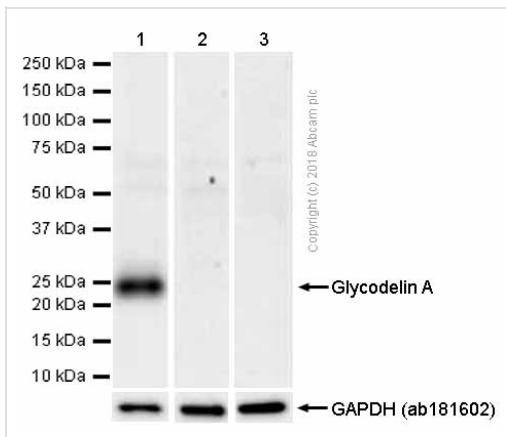
The application notes include recommended starting dilutions; optimal dilutions/concentrations should be determined by the end user.

应用	Ab评论	说明
WB		1/1000 - 1/10000. Detects a band of approximately 21 kDa (predicted molecular weight: 21 kDa).

靶标

功能	This protein is, quantitatively, the main protein synthesized and secreted in the endometrium from mid-luteal phase of the menstrual cycle and during the first semester of pregnancy.
序列相似性	Belongs to the calycin superfamily. Lipocalin family.
翻译后修饰	At least two differentially glycosylated forms are found. Glycodelin-A (GdA) (amniotic fluid) with contraceptive and immunosuppressive activities and glycodelin-S (Gds) (seminal plasma) whose role is not yet known. The gender-specific glycosylation may serve to regulate key process involved in human reproduction.
细胞定位	Secreted.

图片



Western blot - Anti-Placental Protein 14 / Glycodelin A antibody [EP870Y] (ab53289)

All lanes : Anti-Placental Protein 14 /

Glycodelin A antibody [EP870Y] (ab53289) at 0.3 µg/ml (purified)

Lane 1 : Human placenta lysates

Lane 2 : Human kidney lysates

Lane 3 : Human brain lysates

Lysates/proteins at 20 µg per lane.

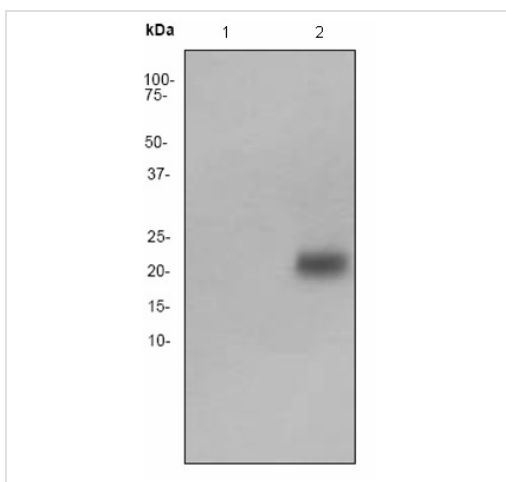
Secondary

All lanes : Goat Anti-Rabbit IgG H&L (HRP) (ab97051) at 1/20000 dilution

Predicted band size: 21 kDa

Observed band size: 24 kDa

Blocking and diluting buffer: 5% NFDM/TBST.



Western blot - Anti-Placental Protein 14 / Glycodelin A antibody [EP870Y] (ab53289)

All lanes : Anti-Placental Protein 14 /

Glycodelin A antibody [EP870Y] (ab53289) at 1/500 dilution

Lane 1 : K562 (Human chronic myelogenous leukemia cell line from bone marrow) cell lysate

Lane 2 : TPA-treated K562 (Human chronic myelogenous leukemia cell line from bone marrow) cell lysate

Secondary

All lanes : Goat anti-rabbit HRP at 1/2000 dilution

Predicted band size: 21 kDa

Observed band size: 21 kDa

Please note: All products are "FOR RESEARCH USE ONLY AND ARE NOT INTENDED FOR DIAGNOSTIC OR THERAPEUTIC USE"

Our Abpromise to you: Quality guaranteed and expert technical support

- Replacement or refund for products not performing as stated on the datasheet
- Valid for 12 months from date of delivery
- Response to your inquiry within 24 hours

- We provide support in Chinese, English, French, German, Japanese and Spanish
- Extensive multi-media technical resources to help you
- We investigate all quality concerns to ensure our products perform to the highest standards

If the product does not perform as described on this datasheet, we will offer a refund or replacement. For full details of the Abpromise, please visit <https://www.abcam.cn/abpromise> or contact our technical team.

Terms and conditions

- Guarantee only valid for products bought direct from Abcam or one of our authorized distributors