


## Product datasheet

# Anti-Pin1 antibody ab113946

### 1 图像

#### 概述

|       |   |
|-------|---|
| 产品名称  | Anti-Pin1抗体   |
| 描述    | 兔多克隆抗体to Pin1   |
| 宿主    | Rabbit  |
| 经测试应用 | 适用于: IP<br>不适用于: WB   |
| 种属反应性 | 与反应: Human<br>预测可用于: Mouse, Rat, Horse, Guinea pig, Cow, Dog, Pig, Chimpanzee, Rhesus monkey, Orngutan  |
| 免疫原   | Synthetic peptide, corresponding to a region within amino acids 50-100 of Human Pin1 (NP_006212.1).   |
| 阳性对照  | HeLa whole cell lysate.   |

#### 性能

|      |  |
|------|--|
| 形式   | Liquid   |
| 存放说明 | Shipped at 4°C. Upon delivery aliquot and store at -20°C. Avoid freeze / thaw cycles.          |
| 存储溶液 | Preservative: 0.09% Sodium azide<br>Constituent: 99% Tris citrate/phosphate<br>Note: pH 7 to 8 |
| 纯度   | Immunogen affinity purified  |
| 克隆   | 多克隆  |
| 同种型  | IgG  |

#### 应用

Our [Abpromise guarantee](#) covers the use of **ab113946** in the following tested applications.

The application notes include recommended starting dilutions; optimal dilutions/concentrations should be determined by the end user.

| 应用 | Ab评论 | 说明                         |
|----|------|----------------------------|
| IP |      | Use at 10 µg/mg of lysate. |

## 应用说明

Is unsuitable for WB.

## 靶标

### 功能

Essential PPlase that regulates mitosis presumably by interacting with NIMA and attenuating its mitosis-promoting activity. Displays a preference for an acidic residue N-terminal to the isomerized proline bond. Catalyzing pSer/Thr-Pro cis/trans isomerizations.

### 序列相似性

Contains 1 PpiC domain.

Contains 1 WW domain.

### 结构域

The WW domain is required for the interaction with STIL and KIF20B.

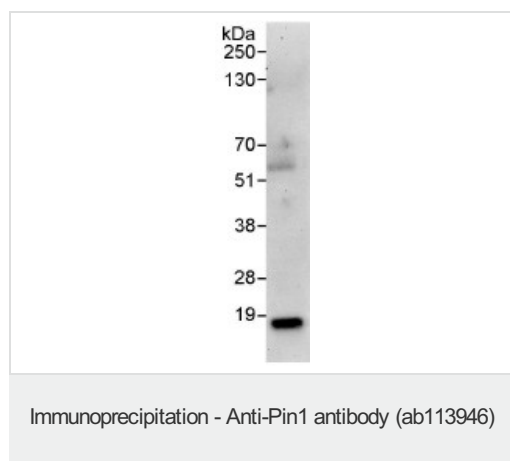
### 翻译后修饰

Phosphorylated upon DNA damage, probably by ATM or ATR.

### 细胞定位

Nucleus.

## 图片



Detection of Pin1 in Immunoprecipitates of HeLa whole cell lysate (1 mg for IP, 20% of IP loaded) using ab113946 at 10 µg/mg lysate for IP. An anti-Pin1 antibody which recognizes a downstream epitope was used at 1 µg/ml for subsequent western blot detection. Detection: Chemiluminescence with exposure time of 3 minutes.

**Please note:** All products are "FOR RESEARCH USE ONLY AND ARE NOT INTENDED FOR DIAGNOSTIC OR THERAPEUTIC USE"

## Our Abpromise to you: Quality guaranteed and expert technical support

- Replacement or refund for products not performing as stated on the datasheet
- Valid for 12 months from date of delivery
- Response to your inquiry within 24 hours
- We provide support in Chinese, English, French, German, Japanese and Spanish
- Extensive multi-media technical resources to help you
- We investigate all quality concerns to ensure our products perform to the highest standards

If the product does not perform as described on this datasheet, we will offer a refund or replacement. For full details of the Abpromise, please visit <https://www.abcam.cn/abpromise> or contact our technical team.

## Terms and conditions

- Guarantee only valid for products bought direct from Abcam or one of our authorized distributors