

Product datasheet

Anti-PLEKHG3 antibody ab108193

1 图像

概述

产品名称	Anti-PLEKHG3抗体
描述	兔多克隆抗体to PLEKHG3
宿主	Rabbit
经测试应用	适用于: WB
种属反应性	与反应: Human
免疫原	Synthetic peptide corresponding to Human PLEKHG3 aa 1178-1207 (C terminal) conjugated to Keyhole Limpet Haemocyanin (KLH). Database link: A1L390
阳性对照	K562 cell line lysate.

性能

形式	Liquid
存放说明	Shipped at 4°C. Store at 4°C (up to 6 months). Store at -20°C long term.
存储溶液	Preservative: 0.09% Sodium azide Constituent: PBS
纯度	Immunogen affinity purified
纯化说明	ab108193 is purified through a protein A column, followed by peptide affinity purification.
克隆	多克隆
同种型	IgG

应用

Our [Abpromise guarantee](#) covers the use of **ab108193** in the following tested applications.

The application notes include recommended starting dilutions; optimal dilutions/concentrations should be determined by the end user.

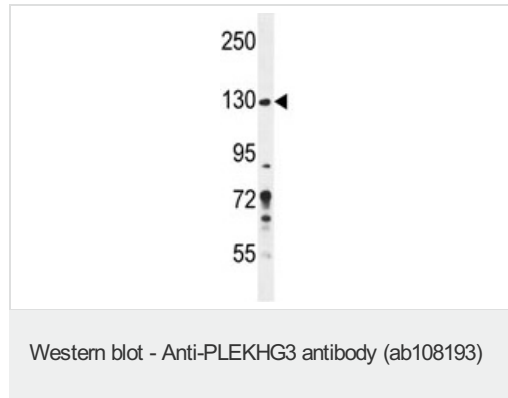
应用	Ab评论	说明
WB		1/100 - 1/500. Predicted molecular weight: 134 kDa.

靶标

序列相似性

Contains 1 DH (DBL-homology) domain.
Contains 1 PH domain.

图片



Anti-PLEKHG3 antibody (ab108193) at 1/100 dilution + K562 cell line lysate at 35 µg

Predicted band size: 134 kDa

Please note: All products are "FOR RESEARCH USE ONLY AND ARE NOT INTENDED FOR DIAGNOSTIC OR THERAPEUTIC USE"

Our Abpromise to you: Quality guaranteed and expert technical support

- Replacement or refund for products not performing as stated on the datasheet
- Valid for 12 months from date of delivery
- Response to your inquiry within 24 hours
- We provide support in Chinese, English, French, German, Japanese and Spanish
- Extensive multi-media technical resources to help you
- We investigate all quality concerns to ensure our products perform to the highest standards

If the product does not perform as described on this datasheet, we will offer a refund or replacement. For full details of the Abpromise, please visit <https://www.abcam.cn/abpromise> or contact our technical team.

Terms and conditions

- Guarantee only valid for products bought direct from Abcam or one of our authorized distributors