

Product datasheet

Anti-PAX8 antibody [BC12] ab124445

★★★★☆ 1 Abreviews 1 图像

概述

产品名称	Anti-PAX8抗体[BC12]
描述	小鼠单克隆抗体[BC12] to PAX8
宿主	Mouse
特异性	ab124445 does not stain B-cells, and does not recognize epitopes of pancreatic origin and neuroendocrine cells in stomach and colon.
经测试应用	适用于: IHC-P, WB
种属反应性	与反应: Mouse, Rat, Cat, Dog, Human
免疫原	Other Immunogen Type corresponding to PAX8.
阳性对照	Human normal kidney, renal cell or serous ovarian carcinoma tissues.
常规说明	Make dilutions in Renoir Red diluent.

性能

形式	Liquid
存放说明	Shipped at 4°C. Store at +4°C short term (1-2 weeks). Store at -20°C or -80°C. Avoid freeze / thaw cycle.
存储溶液	Preservative: 0.099% Sodium azide Constituents: 0.9% Proprietary component, 99% Water
	Buffer contains protein carrier.
纯度	Tissue culture supernatant
克隆	单克隆
克隆编号	BC12
同种型	IgG1

应用

Our [Abpromise guarantee](#) covers the use of **ab124445** in the following tested applications.

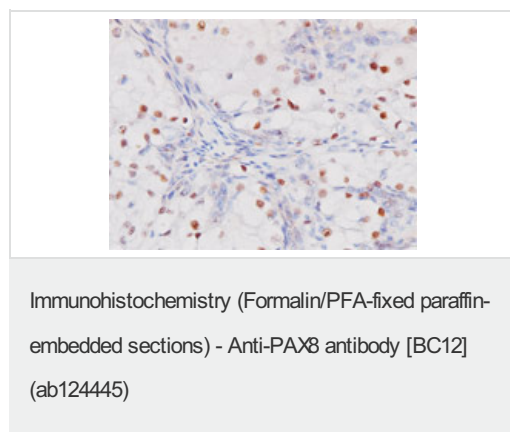
The application notes include recommended starting dilutions; optimal dilutions/concentrations should be determined by the end user.

应用	Ab评论	说明
IHC-P		1/100 - 1/200. Perform heat mediated antigen retrieval via the pressure cooker method before commencing with IHC staining protocol.
WB	★★★★★	Use at an assay dependent concentration.

## 靶标

功能	Transcription factor for the thyroid-specific expression of the genes exclusively expressed in the thyroid cell type, maintaining the functional differentiation of such cells.
组织特异性	Expressed in the excretory system, thyroid gland and Wilms tumors.
疾病相关	Defects in PAX8 are the cause of congenital hypothyroidism non-goitrous type 2 (CHNG2) [MIM:218700]. CHNG2 is a disease characterized by thyroid dysgenesis, the most frequent cause of congenital hypothyroidism, accounting for 85% of case. The thyroid gland can be completely absent (athyreosis), ectopically located and/or severely hypoplastic. Ectopic thyroid gland is the most frequent malformation, with thyroid tissue being found most often at the base of the tongue.
序列相似性	Contains 1 paired domain.
发展阶段	In developing excretory system, during thyroid differentiation and in adult thyroid.
细胞定位	Nucleus.

## 图片



ab124445 at 1/100 dilution staining PAX8 in formalin-fixed paraffin-embedded Human Renal cell carcinoma tissue by Immunohistochemistry.

**Please note:** All products are "FOR RESEARCH USE ONLY AND ARE NOT INTENDED FOR DIAGNOSTIC OR THERAPEUTIC USE"

## Our Abpromise to you: Quality guaranteed and expert technical support

- Replacement or refund for products not performing as stated on the datasheet
- Valid for 12 months from date of delivery
- Response to your inquiry within 24 hours

- We provide support in Chinese, English, French, German, Japanese and Spanish
- Extensive multi-media technical resources to help you
- We investigate all quality concerns to ensure our products perform to the highest standards

If the product does not perform as described on this datasheet, we will offer a refund or replacement. For full details of the Abpromise, please visit <https://www.abcam.cn/abpromise> or contact our technical team.

### **Terms and conditions**

---

- Guarantee only valid for products bought direct from Abcam or one of our authorized distributors