

## Product datasheet

# Anti-NR2F2 antibody ab50487

★☆☆☆☆ 1 Abreviews 3 References 3 图像

### 概述

产品名称	Anti-NR2F2抗体
描述	兔多克隆抗体to NR2F2
宿主	Rabbit
经测试应用	适用于: WB, IHC-P, ELISA
种属反应性	与反应: Human 预测可用于: Mouse, Rat, Cow, Dog, Pig, Zebrafish
免疫原	A region within synthetic peptide: KVGMRREAVQ RGRMPPTQPT HGQFALTNGD PLNCHSYLSG YISLLLRAEP, corresponding to amino acids 141-190 of Human NR2F2 <a href="#">Run BLAST with ExPASy</a> <a href="#">Run BLAST with NCBI</a>
阳性对照	Transfected 293T cell lysate; Epithelial cells of renal tubule of human kidney

### 性能

形式	Liquid
存放说明	Shipped at 4°C. Upon delivery aliquot and store at -20°C. Avoid freeze / thaw cycles.
存储溶液	Preservative: 0.09% Sodium azide Constituents: 2% Sucrose, PBS
纯度	Immunogen affinity purified
克隆	多克隆
同种型	IgG

### 应用

Our [Abpromise guarantee](#) covers the use of **ab50487** in the following tested applications.

The application notes include recommended starting dilutions; optimal dilutions/concentrations should be determined by the end user.

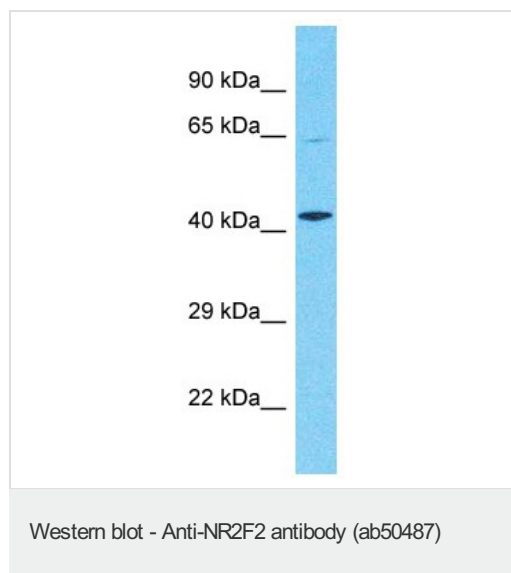
应用	Ab 评论	说明

应用	Ab 评论	说明
WB		Use a concentration of 1 µg/ml. Detects a band of approximately 46 kDa (predicted molecular weight: 46 kDa). Good results were obtained when blocked with 5% non-fat dry milk in 0.05% PBS-T.
IHC-P		Use a concentration of 4 - 8 µg/ml.
ELISA		Use at an assay dependent concentration. ELISA titre using peptide based assay: 1/312500.

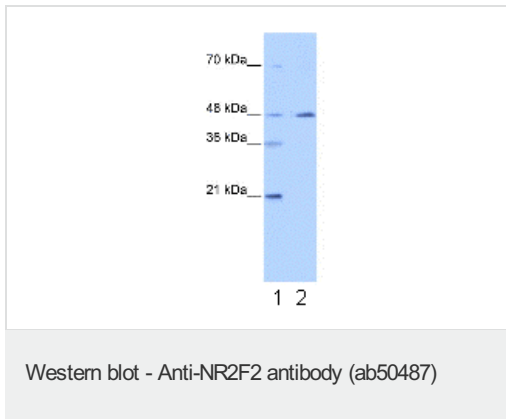
## 靶标

<b>功能</b>	Ligand-activated transcription factor. Activated by high concentrations of 9-cis-retinoic acid and all-trans-retinoic acid, but not by dexamethasone, cortisol or progesterone (in vitro). Regulation of the apolipoprotein A-I gene transcription. Binds to DNA site A.
<b>组织特异性</b>	Ubiquitous.
<b>疾病相关</b>	Congenital heart defects, multiple types, 4
<b>序列相似性</b>	Belongs to the nuclear hormone receptor family. NR2 subfamily. Contains 1 nuclear receptor DNA-binding domain.
<b>细胞定位</b>	Nucleus.

## 图片



Western blot analysis of MCF7 whole cell lysate labelling NR2F2 with ab50487 at 1.0µg/ml.



**Lane 1** : Marker

**Lane 2** : Anti-NR2F2 antibody (ab50487) at 1 µg/ml

**Lane 2** : Transfected 293T cell lysate

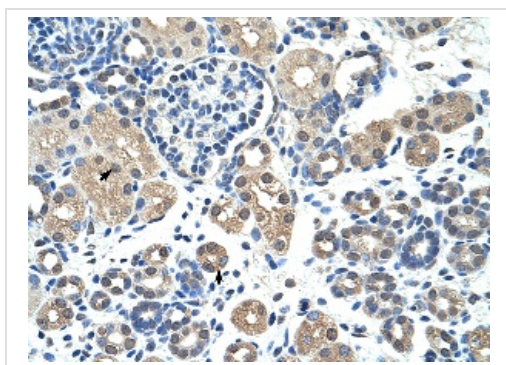
**Secondary**

**All lanes** : HRP conjugated anti-Rabbit IgG at 1/50000 dilution

**Predicted band size:** 46 kDa

**Observed band size:** 46 kDa

Gel concentration: 12%



Immunohistochemistry (Formalin/PFA-fixed paraffine-embedded sections) analysis of human kidney tissue labelling NRF2 with ab50487 at 4-8µg/ml. Arrows indicate positively labelled epithelial cells of renal tubule. Magnification: 400x.

Immunohistochemistry (Formalin/PFA-fixed paraffin-embedded sections) - Anti-NR2F2 antibody (ab50487)

**Please note:** All products are "FOR RESEARCH USE ONLY AND ARE NOT INTENDED FOR DIAGNOSTIC OR THERAPEUTIC USE"

**Our Abpromise to you: Quality guaranteed and expert technical support**

- Replacement or refund for products not performing as stated on the datasheet
- Valid for 12 months from date of delivery
- Response to your inquiry within 24 hours
- We provide support in Chinese, English, French, German, Japanese and Spanish
- Extensive multi-media technical resources to help you
- We investigate all quality concerns to ensure our products perform to the highest standards

If the product does not perform as described on this datasheet, we will offer a refund or replacement. For full details of the Abpromise, please visit <https://www.abcam.cn/abpromise> or contact our technical team.

## Terms and conditions

---

- Guarantee only valid for products bought direct from Abcam or one of our authorized distributors