

Product datasheet

Anti-NKX2.8 antibody ab125040

★ ★ ★ ★ ★ 1 Abreviews 3 图像

概述

产品名称	Anti-NKX2.8抗体
描述	兔多克隆抗体to NKX2.8
宿主	Rabbit
经测试应用	适用于: WB, ICC/IF, IHC-P
种属反应性	与反应: Mouse, Rat, Human
免疫原	Synthetic peptide, corresponding to 19 internal sequence amino acids of Human NKX2.8 (NP_055175).
阳性对照	Rat Liver Tissue Lysate.

性能

形式	Liquid
存放说明	Shipped at 4°C. Store at +4°C short term (1-2 weeks). Upon delivery aliquot. Store at -20°C long term.
存储溶液	Preservative: 0.02% Sodium azide Constituent: 99% PBS
纯度	Immunogen affinity purified
纯化说明	ab125040 is affinity chromatography purified via peptide column.
克隆	多克隆
同种型	IgG

应用

Our [Abpromise guarantee](#) covers the use of **ab125040** in the following tested applications.

The application notes include recommended starting dilutions; optimal dilutions/concentrations should be determined by the end user.

应用	Ab评论	说明
WB		Use a concentration of 1 - 2 µg/ml. Predicted molecular weight: 26 kDa.
ICC/IF		Use a concentration of 20 µg/ml.

应用	Ab评论	说明
IHC-P		Use at an assay dependent concentration.

靶标

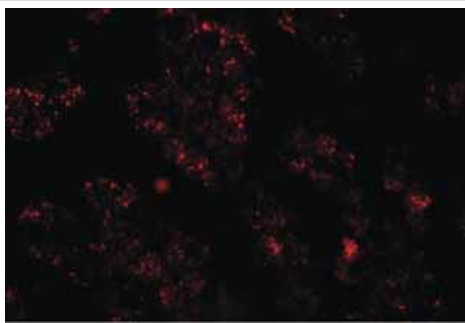
序列相似性

Belongs to the NK-2 homeobox family.
Contains 1 homeobox DNA-binding domain.

细胞定位

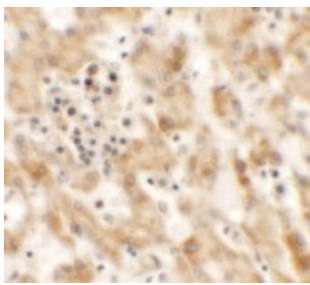
Nucleus.

图片



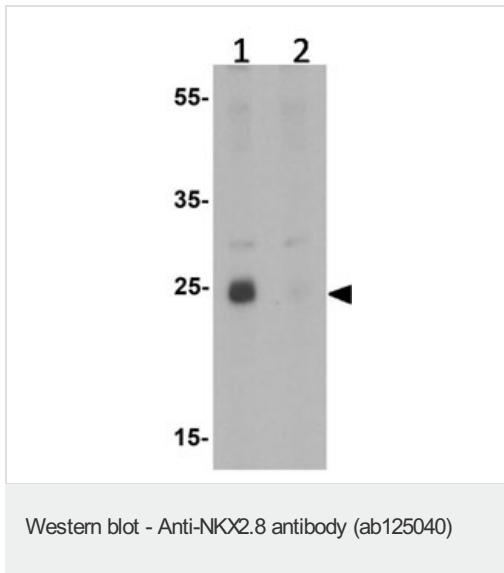
Immunofluorescence of NKX2.8 in Human liver tissue with ab125040 at 20 ug/mL.

Immunocytochemistry/ Immunofluorescence - Anti-NKX2.8 antibody (ab125040)



Immunohistochemistry of NKX2.8 in Human liver tissue with ab125040 at 2.5 µg/mL.

Immunohistochemistry (Formalin/PFA-fixed paraffin-embedded sections) - Anti-NKX2.8 antibody (ab125040)



All lanes : Anti-NKX2.8 antibody (ab125040)
at 1 µg/ml

Lane 1 : Rat liver tissue lysate

Lane 2 : Rat liver tissue lysate with blocking
peptide

Lysates/proteins at 15 µg per lane.

Predicted band size: 26 kDa

Please note: All products are "FOR RESEARCH USE ONLY AND ARE NOT INTENDED FOR DIAGNOSTIC OR THERAPEUTIC USE"

Our Abpromise to you: Quality guaranteed and expert technical support

- Replacement or refund for products not performing as stated on the datasheet
- Valid for 12 months from date of delivery
- Response to your inquiry within 24 hours
- We provide support in Chinese, English, French, German, Japanese and Spanish
- Extensive multi-media technical resources to help you
- We investigate all quality concerns to ensure our products perform to the highest standards

If the product does not perform as described on this datasheet, we will offer a refund or replacement. For full details of the Abpromise, please visit <https://www.abcam.cn/abpromise> or contact our technical team.

Terms and conditions

- Guarantee only valid for products bought direct from Abcam or one of our authorized distributors