

Product datasheet

Anti-NCF1 (phospho S328) antibody ab111855

★★★★★ 1 Abreviews 1 References 1 图像

概述

产品名称	Anti-NCF1 (phospho S328)抗体
描述	兔多克隆抗体to NCF1 (phospho S328)
宿主	Rabbit
特异性	ab111855 detects endogenous levels of NCF1 only when phosphorylated at serine 328.
经测试应用	适用于: IHC-P
种属反应性	与反应: Human 预测可用于: Mouse, Rat
免疫原	Synthetic phosphopeptide derived from Human NCF1 around the phosphorylation site of serine 328 (R-N-S ^P -V-R).
阳性对照	Human lymph node tissue.

性能

形式	Liquid
存放说明	Shipped at 4°C. Store at -20°C. Stable for 12 months at -20°C.
存储溶液	pH: 7.40 Preservative: 0.02% Sodium azide Constituents: 49.1% PBS, 50% Glycerol, 0.88% Sodium chloride
纯度	Immunogen affinity purified
纯化说明	ab111855 was affinity-purified from Rabbit antiserum by affinity-chromatography using epitope-specific phosphopeptide. The antibody against non-phosphopeptide was removed by chromatography using non-phosphopeptide corresponding to the phosphorylation site.
克隆	多克隆
同种型	IgG

应用

Our [Abpromise guarantee](#) covers the use of **ab111855** in the following tested applications.

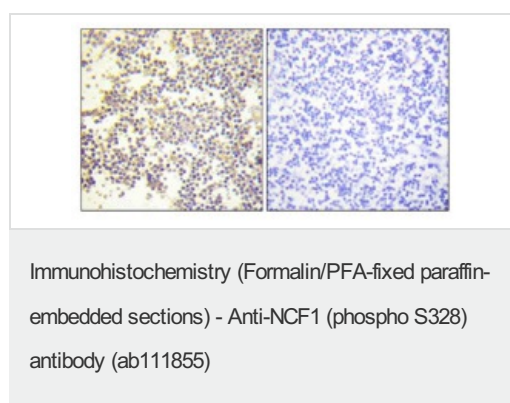
The application notes include recommended starting dilutions; optimal dilutions/concentrations should be determined by the end user.

应用	Ab评论	说明
IHC-P		1/50 - 1/100. Perform heat mediated antigen retrieval with citrate buffer pH 6 before commencing with IHC staining protocol.

靶标

功能	NCF2, NCF1, and a membrane bound cytochrome b558 are required for activation of the latent NADPH oxidase (necessary for superoxide production).
疾病相关	Defects in NCF1 are the cause of chronic granulomatous disease autosomal recessive cytochrome-b-positive type 1 (CGD1) [MIM:233700]. Chronic granulomatous disease is a genetically heterogeneous disorder characterized by the inability of neutrophils and phagocytes to kill microbes that they have ingested. Patients suffer from life-threatening bacterial/fungal infections.
序列相似性	Contains 1 PX (phox homology) domain. Contains 2 SH3 domains.
细胞定位	Cytoplasm.

图片



ab111855 at 1/50 dilution staining NCF1 in paraffin-embedded Human Lymph node tissue by Immunohistochemistry. The image on the right is treated with the synthesized phosphopeptide.

Please note: All products are "FOR RESEARCH USE ONLY AND ARE NOT INTENDED FOR DIAGNOSTIC OR THERAPEUTIC USE"

Our Abpromise to you: Quality guaranteed and expert technical support

- Replacement or refund for products not performing as stated on the datasheet
- Valid for 12 months from date of delivery
- Response to your inquiry within 24 hours
- We provide support in Chinese, English, French, German, Japanese and Spanish
- Extensive multi-media technical resources to help you
- We investigate all quality concerns to ensure our products perform to the highest standards

If the product does not perform as described on this datasheet, we will offer a refund or replacement. For full details of the Abpromise,

please visit <https://www.abcam.cn/abpromise> or contact our technical team.

Terms and conditions

- Guarantee only valid for products bought direct from Abcam or one of our authorized distributors