


Product datasheet

Anti-Myeloid leukemia factor 1 antibody ab70211

1 References 2 图像

概述

产品名称	Anti-Myeloid leukemia factor 1 抗体
描述	兔多克隆抗体 to Myeloid leukemia factor 1
宿主	Rabbit
特异性	We have data to indicate that this antibody may not cross react with Mouse. However, this has not been conclusively tested and expression levels may vary in certain cell lines/tissues.
经测试应用	适用于: WB, IP
种属反应性	与反应: Human 预测可用于: Chimpanzee, Rhesus monkey, Gorilla, Orangutan 
免疫原	A region between residue 200 and the C-terminus (residue 256) of human Myeloid leukemia factor 1.
阳性对照	Whole cell lysate from HeLa cells.

性能

形式	Liquid
存放说明	Shipped at 4°C. Upon delivery aliquot and store at -20°C. Avoid freeze / thaw cycles.
存储溶液	Preservative: 0.09% Sodium azide Constituents: 1.815% Tris, 1.764% Sodium citrate, 0.021% PBS
纯度	Immunogen affinity purified
克隆	多克隆
同种型	IgG

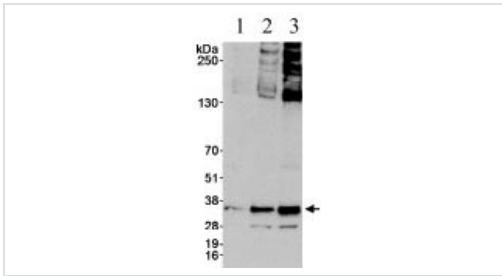
应用

Our [Abpromise guarantee](#) covers the use of **ab70211** in the following tested applications.

The application notes include recommended starting dilutions; optimal dilutions/concentrations should be determined by the end user.

应用	Ab评论	说明
WB		

应用	Ab评论	说明
IP		
应用说明	<p>IP: Use at 2 - 5 µg/mg of lysate.</p> <p>WB: 1/5000 - 1/15000. Detects a band of approximately 35 kDa (predicted molecular weight: 31 kDa).</p> <p>Not yet tested in other applications.</p> <p>Optimal dilutions/concentrations should be determined by the end user.</p>	
靶标		
功能	<p>Involved in lineage commitment of primary hemopoietic progenitors by restricting erythroid formation and enhancing myeloid formation. Interferes with erythropoietin-induced erythroid terminal differentiation by preventing cells from exiting the cell cycle through suppression of CDKN1B/p27Kip1 levels. Suppresses RFWD2/COP1 activity via CSN3 which activates p53 and induces cell cycle arrest. Binds DNA and affects the expression of a number of genes so may function as a transcription factor in the nucleus.</p>	
组织特异性	<p>Most abundant in testis, ovary, skeletal muscle, heart, kidney and colon. Low expression in spleen, thymus and peripheral blood leukocytes.</p>	
疾病相关	<p>Note=A chromosomal aberration involving MLF1 is a cause of myelodysplastic syndrome (MDS). Translocation t(3;5)(q25.1;q34) with NPM1/NPM.</p>	
序列相似性	<p>Belongs to the MLF family.</p>	
翻译后修饰	<p>Phosphorylation is required for binding to YWHAZ.</p>	
细胞定位	<p>Cytoplasm. Nucleus. In non-hematopoietic cells, resides primarily in the cytoplasm with some punctate nuclear localization. Shuttles between the cytoplasm and nucleus. In hematopoietic cells, located preferentially in the nucleus. Found in the nucleolus when fused to NPM.</p>	
图片		



Western blot - Anti-Myeloid leukemia factor 1 antibody (ab70211)

**All lanes :** Anti-Myeloid leukemia factor 1 antibody (ab70211) at 0.1  $\mu\text{g/ml}$

**Lane 1 :** Whole cell lysate from HeLa cells at 5  $\mu\text{g}$

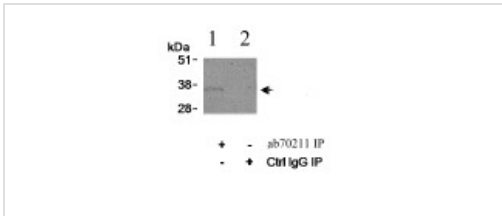
**Lane 2 :** Whole cell lysate from HeLa cells at 15  $\mu\text{g}$

**Lane 3 :** Whole cell lysate from HeLa cells at 50  $\mu\text{g}$

**Predicted band size:** 31 kDa

**Observed band size:** 35 kDa

**Additional bands at:** 130 kDa, 250 kDa, 28 kDa. We are unsure as to the identity of these extra bands.



Immunoprecipitation - Anti-Myeloid leukemia factor 1 antibody (ab70211)

Detection of Human Myeloid leukemia factor 1 by Immunoprecipitation in Whole cell lysate from HeLa cells (1 mg for IP, 1/4 of IP loaded). Affinity purified rabbit anti-Myeloid leukemia factor 1 antibody (ab70211) was used at 3  $\mu\text{g/mg}$  lysate for IP (Lane 1) and at 0.1  $\mu\text{g/ml}$  for WB detection. Lane 2 represents IP IgG control.

**Please note:** All products are "FOR RESEARCH USE ONLY AND ARE NOT INTENDED FOR DIAGNOSTIC OR THERAPEUTIC USE"

### Our Abpromise to you: Quality guaranteed and expert technical support

- Replacement or refund for products not performing as stated on the datasheet
- Valid for 12 months from date of delivery
- Response to your inquiry within 24 hours
- We provide support in Chinese, English, French, German, Japanese and Spanish
- Extensive multi-media technical resources to help you
- We investigate all quality concerns to ensure our products perform to the highest standards

If the product does not perform as described on this datasheet, we will offer a refund or replacement. For full details of the Abpromise, please visit <https://www.abcam.cn/abpromise> or contact our technical team.

### Terms and conditions

- Guarantee only valid for products bought direct from Abcam or one of our authorized distributors