

Product datasheet

Anti-Mre11 antibody ab33125

★★★★☆ 3 Abreviews 6 References 3 图像

概述

产品名称	Anti-Mre11抗体
描述	兔多克隆抗体to Mre11
宿主	Rabbit
经测试应用	适用于: IHC-P, WB, IP, ICC/IF
种属反应性	与反应: Human 预测可用于: Mouse, Rat
免疫原	Synthetic peptide conjugated to KLH derived from within residues 600 - 700 of Human Mre11. 参阅Abcam的专有抗源政策 (Peptide available as ab33124 .)
阳性对照	Jurkat (Human T cell lymphoblast-like cell line) Whole Cell Lysate; A431 (Human epithelial carcinoma cell line) Whole Cell Lysate;

性能

形式	Liquid
存放说明	Shipped at 4°C. Store at +4°C short term (1-2 weeks). Upon delivery aliquot. Store at -20°C or -80°C. Avoid freeze / thaw cycle.
存储溶液	Preservative: 0.02% Sodium Azide Constituents: 1% BSA, PBS. pH 7.4
纯度	Immunogen affinity purified
克隆	多克隆
同种型	IgG

应用

Our [Abpromise guarantee](#) covers the use of **ab33125** in the following tested applications.

The application notes include recommended starting dilutions; optimal dilutions/concentrations should be determined by the end user.

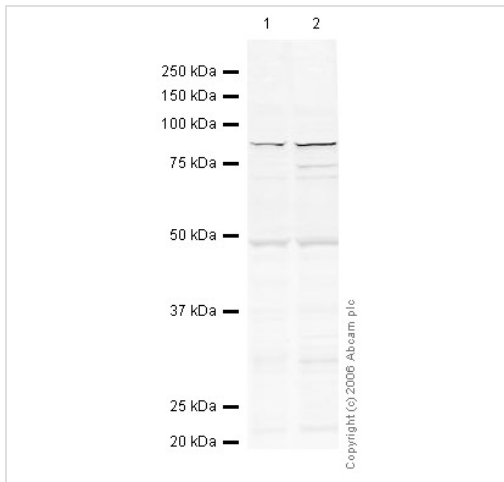
应用	Ab评论	说明
IHC-P	★★★★☆	1/250. Perform heat mediated antigen retrieval before commencing with IHC staining protocol.

应用	Ab评论	说明
WB	★★★★☆	Use a concentration of 1 µg/ml. Detects a band of approximately 81 kDa (predicted molecular weight: 81 kDa).
IP		Use at an assay dependent concentration.
ICC/IF	★★★★★	1/200.

靶标

功能	Component of the MRN complex, which plays a central role in double-strand break (DSB) repair, DNA recombination, maintenance of telomere integrity and meiosis. The complex possesses single-strand endonuclease activity and double-strand-specific 3'-5' exonuclease activity, which are provided by MRE11A. RAD50 may be required to bind DNA ends and hold them in close proximity. This could facilitate searches for short or long regions of sequence homology in the recombining DNA templates, and may also stimulate the activity of DNA ligases and/or restrict the nuclease activity of MRE11A to prevent nucleolytic degradation past a given point. The complex may also be required for DNA damage signaling via activation of the ATM kinase. In telomeres the MRN complex may modulate t-loop formation.
疾病相关	Defects in MRE11A are a cause of ataxia telangiectasia-like disorder (ATLD) [MIM:604391]. ATLD is a disease with the same clinical feature than ataxia-telangiectasia but with a somewhat milder clinical course.
序列相似性	Belongs to the MRE11/RAD32 family.
翻译后修饰	Phosphorylated upon DNA damage, probably by ATM or ATR.
细胞定位	Nucleus. Localizes to discrete nuclear foci after treatment with genotoxic agents.

图片



Western blot - Anti-Mre11 antibody (ab33125)

All lanes : Anti-Mre11 antibody (ab33125) at 1 µg/ml

Lane 1 : Jurkat whole cell lysate (ab7899)

Lane 2 : A431 whole cell lysate (ab7909)

Lysates/proteins at 20 µg per lane.

Secondary

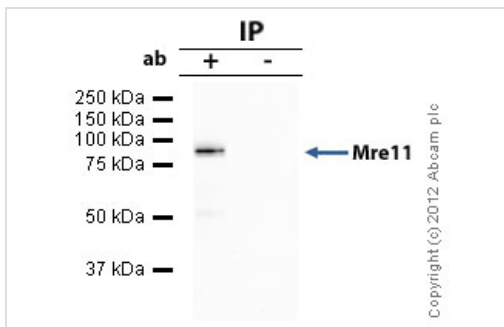
All lanes : IR Dye 680 Conjugated Goat Anti-Rabbit IgG (H+L) at 1/15000 dilution

Performed under reducing conditions.

Predicted band size: 81 kDa

Observed band size: 81 kDa

Additional bands at: 49 kDa. We are unsure as to the identity of these extra bands.



Immunoprecipitation - Anti-Mre11 antibody (ab33125)

Mre11 was immunoprecipitated using 0.5mg A431 whole cell extract, 5µg of Rabbit polyclonal to Mre11 and 50µl of protein G magnetic beads (+). No antibody was added to the control (-).

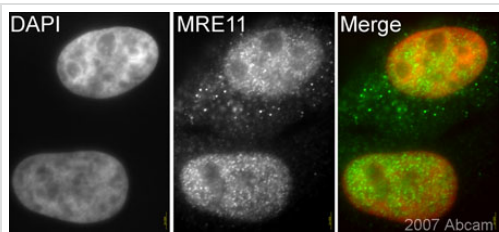
The antibody was incubated under agitation with Protein G beads for 10min, A431 whole cell extract lysate diluted in RIPA buffer was added to each sample and incubated for a further 10min under agitation.

Proteins were eluted by addition of 40µl SDS loading buffer and incubated for 10min at 70°C; 10µl of each sample was separated on a SDS PAGE gel, transferred to a nitrocellulose membrane, blocked with 5% BSA and probed with ab33125.

Secondary: Mouse monoclonal [SB62a]

Secondary Antibody to Rabbit IgG light chain (HRP) (ab99697).

Band: 81kDa: Mre11



Immunocytochemistry/ Immunofluorescence - Anti-Mre11 antibody (ab33125)

This image is courtesy of an Abreview submitted by Dr Kirk McManus

ab33125 (1/200) staining Mre11 in asynchronous HeLa cells (green). Cells were fixed using paraformaldehyde and counterstained with DAPI in order to highlight the nucleus. Please refer to abreview for further experimental details.

Please note: All products are "FOR RESEARCH USE ONLY AND ARE NOT INTENDED FOR DIAGNOSTIC OR THERAPEUTIC USE"

Our Abpromise to you: Quality guaranteed and expert technical support

- Replacement or refund for products not performing as stated on the datasheet
- Valid for 12 months from date of delivery
- Response to your inquiry within 24 hours
- We provide support in Chinese, English, French, German, Japanese and Spanish
- Extensive multi-media technical resources to help you
- We investigate all quality concerns to ensure our products perform to the highest standards

If the product does not perform as described on this datasheet, we will offer a refund or replacement. For full details of the Abpromise, please visit <https://www.abcam.cn/abpromise> or contact our technical team.

Terms and conditions

- Guarantee only valid for products bought direct from Abcam or one of our authorized distributors