

Product datasheet

Anti-MLC1 antibody ab94730

★★★★★ 1 Abreviews 3 图像

概述

| | |
|-------|---|
| 产品名称 | Anti-MLC1抗体 |
| 描述 | 兔多克隆抗体to MLC1 |
| 宿主 | Rabbit |
| 经测试应用 | 适用于: ICC/IF, WB |
| 种属反应性 | 与反应: Human 预测可用于: Mouse, Rat, Horse, Guinea pig, Cow, Dog |
| 免疫原 | Synthetic peptide corresponding to a region within internal amino acids 180 - 229 (DSANILDEVP FPARVLKSYS VVEVIAGISA VLGGIINALNV DDSVSGPHLS) of Human MLC1 (NP_055981). Run BLAST with ExPASy Run BLAST with NCBI |
| 阳性对照 | Fetal spleen lysate |

性能

| | |
|------|--|
| 形式 | Liquid |
| 存放说明 | Shipped at 4°C. Upon delivery aliquot and store at -20°C. Avoid repeated freeze / thaw cycles. |
| 存储溶液 | Preservative: 0.09% Sodium azide Constituents: 2% Sucrose, PBS |
| 纯度 | Immunogen affinity purified |
| 克隆 | 多克隆 |
| 同种型 | IgG |

应用

Our [Abpromise guarantee](#) covers the use of **ab94730** in the following tested applications.

The application notes include recommended starting dilutions; optimal dilutions/concentrations should be determined by the end user.

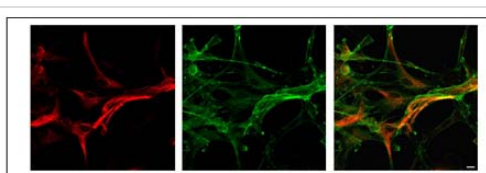
| 应用 | Ab评论 | 说明 |
|--------|------|--|
| ICC/IF | | Use at an assay dependent concentration. |

| 应用 | Ab评论 | 说明 |
|----|-------|--|
| WB | ★★★★★ | Use a concentration of 1 µg/ml. Predicted molecular weight: 41 kDa. Good results were obtained when blocked with 5% non-fat dry milk in 0.05% PBS-T. |

靶标

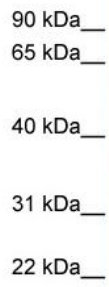
| | |
|-------|--|
| 功能 | Regulates the response of astrocytes to hypo-osmosis by promoting calcium influx. |
| 组织特异性 | Expressed in the brain, with highest levels found in the amygdala, nucleus caudatus, thalamus and hippocampus. |
| 疾病相关 | Leukoencephalopathy, megalencephalic, with subcortical cysts, 1 |
| 细胞定位 | Membrane. Cell membrane. Cytoplasm, perinuclear region. Endoplasmic reticulum. |

图片



Immunocytochemistry/ Immunofluorescence - Anti-MLC1 antibody (ab94730)

ab94730 staining MLC1 in primary Rat cortical astrocytes by Immunocytochemistry/ Immunofluorescence. Cells were fixed with 4% paraformaldehyde. After 1 hour of incubation with blocking solution (5% BSA in PBS), cells were incubated for 1 hour at room temperature with a NBD phalloidin high-affinity F-actin probe (1/30) to stain actin filaments and visualize the whole cell body, used in combination with ab94730 (1/50) diluted in PBS+0.2% Triton X100. To amplify MLC1 staining, a biotinylated secondary antibody (4.3 µg/ml, Biotin-SP-AffiniPure goat anti-rabbit IgG H+L) followed by incubation with 2 µg/ml streptavidin-TRITC was used.



90 kDa__
65 kDa__
40 kDa__
31 kDa__
22 kDa__

Western blot - Anti-MLC1 antibody (ab94730)

Anti-MLC1 antibody (ab94730) at 1 µg/ml (in 5% skim milk / PBS buffer) + Human fetal spleen lysate at 10 µg

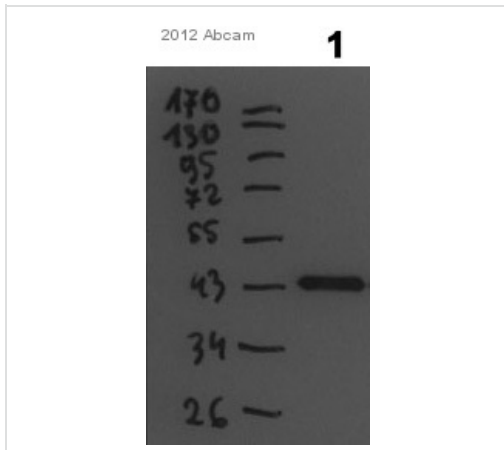
Secondary

HRP conjugated anti-Rabbit IgG at 1/50000 dilution

Predicted band size: 41 kDa

Gel concentration: 12%

Secondary antibody - [anti-rabbit HRP \(ab6721\)](#)



Western blot - Anti-MLC1 antibody (ab94730)

This image is courtesy of an anonymous Abreview

Anti-MLC1 antibody (ab94730) at 1/500 dilution + Mouse brain tissue lysate at 20 µg

Secondary

Goat Anti-Rabbit IgG H&L (HRP) (ab6721) at 1/5000 dilution

Developed using the ECL technique.

Performed under reducing conditions.

Predicted band size: 41 kDa

Observed band size: 43 kDa

Exposure time: 1 minute

Blocked with 5% Milk for 1 hour at 25°C.

Secondary antibody - [anti-rabbit HRP \(ab6721\)](#)

Please note: All products are "FOR RESEARCH USE ONLY AND ARE NOT INTENDED FOR DIAGNOSTIC OR THERAPEUTIC USE"

Our Abpromise to you: Quality guaranteed and expert technical support

- Replacement or refund for products not performing as stated on the datasheet
- Valid for 12 months from date of delivery
- Response to your inquiry within 24 hours
- We provide support in Chinese, English, French, German, Japanese and Spanish
- Extensive multi-media technical resources to help you
- We investigate all quality concerns to ensure our products perform to the highest standards

If the product does not perform as described on this datasheet, we will offer a refund or replacement. For full details of the Abpromise, please visit <https://www.abcam.cn/abpromise> or contact our technical team.

Terms and conditions

- Guarantee only valid for products bought direct from Abcam or one of our authorized distributors