

Product datasheet

Anti-MAP3K9 antibody - C-terminal ab71628

1 References 2 图像

概述

产品名称	Anti-MAP3K9抗体- C-terminal
描述	兔多克隆抗体to MAP3K9 - C-terminal
宿主	Rabbit
经测试应用	适用于: ELISA, IHC-P, WB
种属反应性	与反应: Mouse, Rat, Human
免疫原	Synthetic peptide corresponding to Human MAP3K9 (C terminal) conjugated to keyhole limpet haemocyanin.
阳性对照	Human breast carcinoma tissue and rat testis tissue and A375 cell lysates.

性能

形式	Liquid
存放说明	Shipped at 4°C. Upon delivery aliquot and store at -20°C or -80°C. Avoid repeated freeze / thaw cycles.
存储溶液	Preservative: 0.09% Sodium azide Constituent: PBS
纯度	Protein G purified
纯化说明	ab71628 is purified through a protein G column, eluted with high and low pH buffers and neutralized immediately, followed by dialysis against PBS.
克隆	多克隆
同种型	IgG

应用

Our [Abpromise guarantee](#) covers the use of **ab71628** in the following tested applications.

The application notes include recommended starting dilutions; optimal dilutions/concentrations should be determined by the end user.

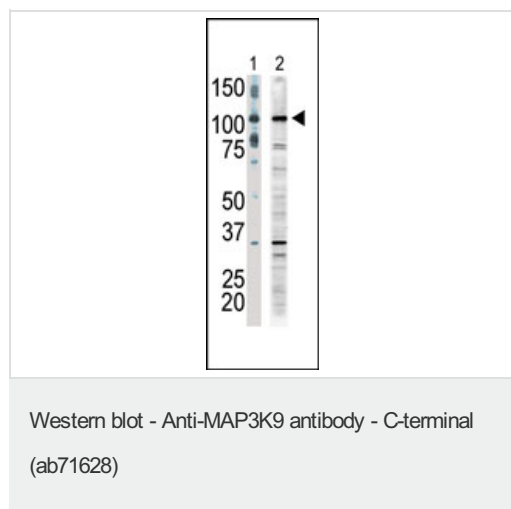
应用	Ab评论	说明
ELISA		1/1000.

应用	Ab评论	说明
IHC-P		1/50 - 1/100.
WB		1/100 - 1/500. Detects a band of approximately 100 kDa (predicted molecular weight: 118 kDa).

靶标

功能	Activates the JUN N-terminal pathway.
组织特异性	Expressed in epithelial tumor cell lines of colonic, breast and esophageal origin.
序列相似性	Belongs to the protein kinase superfamily. STE Ser/Thr protein kinase family. MAP kinase kinase subfamily. Contains 1 protein kinase domain. Contains 1 SH3 domain.
翻译后修饰	Autophosphorylation on serine and threonine residues within the activation loop plays a role in enzyme activation. Thr-312 is likely to be the main autophosphorylation site.

图片



All lanes : Anti-MAP3K9 antibody - C-terminal (ab71628) at 1/100 dilution

Lane 1 : A375 cell lysate

Lane 2 : rat testis tissue lysate

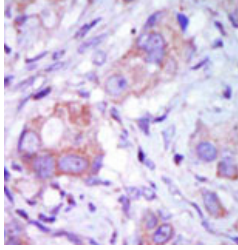
Lysates/proteins at 12.5 µg per lane.

Predicted band size: 118 kDa

Observed band size: 100 kDa

[why is the actual band size different from the predicted?](#)

Additional bands at: 35 kDa. We are unsure as to the identity of these extra bands.



ab71628 at 1/50 dilution, staining MAP3K9 in human breast carcinoma by Immunohistochemistry, Formalin-fixed, Paraffin-embedded tissue, followed by peroxidase-conjugated secondary antibody and DAB staining.

Immunohistochemistry (Formalin/PFA-fixed paraffin-embedded sections) - Anti-MAP3K9 antibody - C-terminal (ab71628)

Please note: All products are "FOR RESEARCH USE ONLY AND ARE NOT INTENDED FOR DIAGNOSTIC OR THERAPEUTIC USE"

Our Abpromise to you: Quality guaranteed and expert technical support

- Replacement or refund for products not performing as stated on the datasheet
- Valid for 12 months from date of delivery
- Response to your inquiry within 24 hours

- We provide support in Chinese, English, French, German, Japanese and Spanish
- Extensive multi-media technical resources to help you
- We investigate all quality concerns to ensure our products perform to the highest standards

If the product does not perform as described on this datasheet, we will offer a refund or replacement. For full details of the Abpromise, please visit <https://www.abcam.cn/abpromise> or contact our technical team.

Terms and conditions

- Guarantee only valid for products bought direct from Abcam or one of our authorized distributors