


Product datasheet

Anti-LOXL2 antibody ab113201

1 图像

概述

产品名称	Anti-LOXL2抗体
描述	兔多克隆抗体to LOXL2
宿主	Rabbit
经测试应用	适用于: WB
种属反应性	与反应: Human 预测可用于: Horse, Macaque monkey, Gorilla, Orangutan 
免疫原	Synthetic peptide conjugated to KLH derived from within residues 1 - 100 of Human LOXL2. 参阅Abcam的专有抗源政策
阳性对照	This antibody gave a positive signal in the following whole cell lysates: LNCaP; DU145; A431; A549; MDA MB 231; MCF7.

性能

形式	Liquid
存放说明	Shipped at 4°C. Store at +4°C short term (1-2 weeks). Upon delivery aliquot. Store at -20°C or -80°C. Avoid freeze / thaw cycle.
存储溶液	pH: 7.40 Preservative: 0.02% Sodium azide Constituent: PBS Note: Batches of this product that have a concentration < 1mg/ml may have BSA added as a stabilising agent. If you would like information about the formulation of a specific lot, please contact our scientific support team who will be happy to help.
纯度	Immunogen affinity purified
克隆	多克隆
同种型	IgG

应用

Our [Abpromise guarantee](#) covers the use of **ab113201** in the following tested applications.

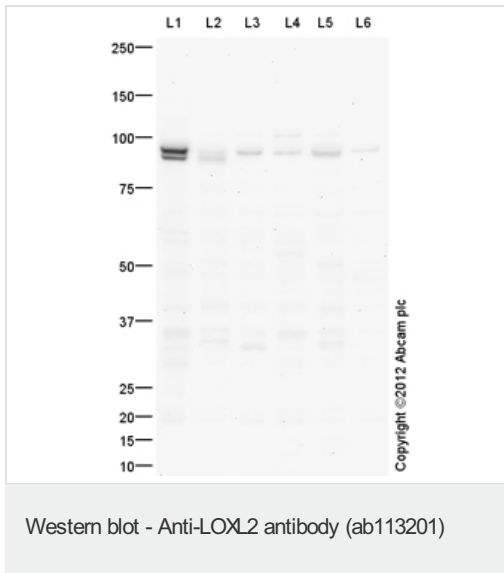
The application notes include recommended starting dilutions; optimal dilutions/concentrations should be determined by the end user.

应用	Ab评论	说明
WB		Use a concentration of 1 µg/ml. Detects a band of approximately 90 kDa (predicted molecular weight: 86 kDa).

靶标

组织特异性	Expressed in many tissues. Highest expression in reproductive tissues, placenta, uterus and prostate.
序列相似性	Belongs to the lysyl oxidase family. Contains 4 SRCR domains.
翻译后修饰	The lysine tyrosylquinone cross-link (LTQ) is generated by condensation of the epsilon-amino group of a lysine with a topaquinone produced by oxidation of tyrosine.
细胞定位	Secreted > extracellular space.

图片



All lanes : Anti-LOXL2 antibody (ab113201)
at 1 µg/ml

Lane 1 : LNCaP human prostate carcinoma cell line lysate Whole Cell Lysate

Lane 2 : DU 145 (Human prostate carcinoma cell line) Whole Cell Lysate

Lane 3 : A431 (Human epithelial carcinoma cell line) Whole Cell Lysate

Lane 4 : A549 (Human lung adenocarcinoma epithelial cell line) Whole Cell Lysate

Lane 5 : MDA-MB-231 (Human breast adenocarcinoma cell line) Whole Cell Lysate

Lane 6 : MCF7 (Human breast adenocarcinoma cell line) Whole Cell Lysate

Lysates/proteins at 10 µg per lane.

Secondary

All lanes : Goat Anti-Rabbit IgG H&L (HRP) preadsorbed ([ab97080](#)) at 1/5000 dilution

Developed using the ECL technique.

Performed under reducing conditions.

Predicted band size: 86 kDa

Observed band size: 90 kDa

Additional bands at: 35 kDa, 86 kDa

(possible cleavage fragment). We are unsure as to the identity of these extra bands.

Exposure time: 150 seconds

LOXL2 contains a number of potential glycosylation sites (SwissProt) which may explain its migration at a higher molecular weight than predicted. The band observed at 86 kDa could potentially be a cleaved form of LOXL2 due to the presence of a 25 amino acid signal peptide.

Our Abpromise to you: Quality guaranteed and expert technical support

- Replacement or refund for products not performing as stated on the datasheet
- Valid for 12 months from date of delivery
- Response to your inquiry within 24 hours

- We provide support in Chinese, English, French, German, Japanese and Spanish
- Extensive multi-media technical resources to help you
- We investigate all quality concerns to ensure our products perform to the highest standards

If the product does not perform as described on this datasheet, we will offer a refund or replacement. For full details of the Abpromise, please visit <https://www.abcam.cn/abpromise> or contact our technical team.

Terms and conditions

- Guarantee only valid for products bought direct from Abcam or one of our authorized distributors