

Product datasheet

Anti-LBH antibody ab122223

1 References 2 图像

概述

产品名称	Anti-LBH抗体
描述	兔多克隆抗体to LBH
宿主	Rabbit
经测试应用	适用于: IHC-P, ICC/IF
种属反应性	与反应: Human
免疫原	antigen sequence: PDYLRS AKMT EVM MNTQPME EIGLS PRKDG LSYQIFPDPS DFDRCKLKD RLP SIVVEPT EGEVESGELR WPPEEFLVQE DEQDNCEETA KE, corresponding to amino acids 10-101 of Human LBH (UniProt ID: Q53QV2). Run BLAST with ExPASy Run BLAST with NCBI
阳性对照	IHC-P: Human hippocampus tissue ICC/IF: Human cell line A 431

性能

形式	Liquid
存放说明	Shipped at 4°C. Store at +4°C short term (1-2 weeks). Upon delivery aliquot. Store at -20°C long term.
存储溶液	pH: 7.20 Preservative: 0.02% Sodium azide Constituents: 59% PBS, 40% Glycerol
纯度	Immunogen affinity purified
克隆	多克隆
同种型	IgG

应用

Our [Abpromise guarantee](#) covers the use of **ab122223** in the following tested applications.

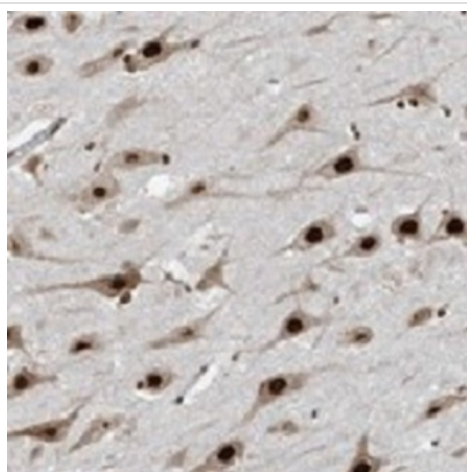
The application notes include recommended starting dilutions; optimal dilutions/concentrations should be determined by the end user.

应用	Ab 评论	说明
IHC-P		1/200 - 1/500. Perform heat mediated antigen retrieval with citrate buffer pH 6 before commencing with IHC staining protocol.
ICC/IF		Use a concentration of 1 - 4 µg/ml. The following steps are recommended prior to antibody incubation: cells fixation in ice cold 4% paraformaldehyde pH 7.2-7.3, followed by permeabilization with 0.1% Triton X-100 in PBS for 3x5 minutes.

靶标

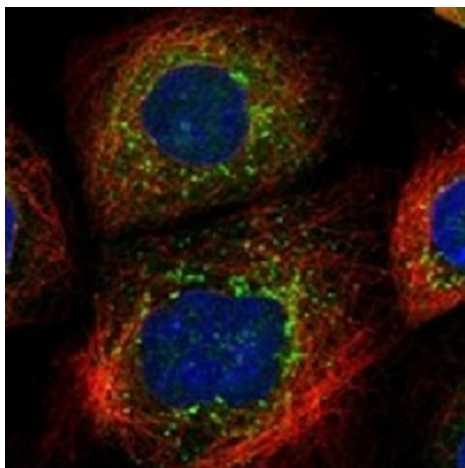
功能	Transcriptional activator which may act in mitogen-activated protein kinase signaling pathway.
组织特异性	Highly expressed in heart, and expressed at low levels in placenta, lung, skeletal muscle, kidney and liver.
序列相似性	Belongs to the LBH family.
发展阶段	Expressed in heart of 25 and 17 weeks embryos.
细胞定位	Nucleus. Cytoplasm.

图片



ab122223, at a 1/400 dilution, staining LBH in paraffin embedded Human hippocampus tissue by Immunohistochemistry.

Immunohistochemistry (Formalin/PFA-fixed paraffin-embedded sections) - Anti-LBH antibody (ab122223)



ab122223, at 4 $\mu\text{g/ml}$, staining LBH in Human cell line A-431 by Immunofluorescence. Antibody staining is shown in green.

Immunocytochemistry/ Immunofluorescence - Anti-LBH antibody (ab122223)

Please note: All products are "FOR RESEARCH USE ONLY AND ARE NOT INTENDED FOR DIAGNOSTIC OR THERAPEUTIC USE"

Our Abpromise to you: Quality guaranteed and expert technical support

- Replacement or refund for products not performing as stated on the datasheet
- Valid for 12 months from date of delivery
- Response to your inquiry within 24 hours
- We provide support in Chinese, English, French, German, Japanese and Spanish
- Extensive multi-media technical resources to help you
- We investigate all quality concerns to ensure our products perform to the highest standards

If the product does not perform as described on this datasheet, we will offer a refund or replacement. For full details of the Abpromise, please visit <https://www.abcam.cn/abpromise> or contact our technical team.

Terms and conditions

- Guarantee only valid for products bought direct from Abcam or one of our authorized distributors