


Product datasheet

Anti-KPNA3 antibody ab117578

3 图像

概述

产品名称	Anti-KPNA3抗体
描述	兔多克隆抗体to KPNA3
宿主	Rabbit
经测试应用	适用于: WB, ELISA, IHC-P
种属反应性	与反应: Human 预测可用于: Mouse, Rat 
免疫原	Synthetic peptide conjugated to KLH, from the C terminal region of Human KPNA3 (NP_002258.2).
阳性对照	Human Adrenal, Brain (Cerebellum) and Human Colon tissues.

性能

形式	Liquid
存放说明	Shipped at 4°C. Store at +4°C short term (1-2 weeks). Store at -20°C or -80°C. Avoid freeze / thaw cycle.
存储溶液	Preservative: 0.02% Sodium azide Constituent: 99% PBS
纯度	Protein A purified
克隆	多克隆
同种型	IgG

应用

Our [Abpromise guarantee](#) covers the use of **ab117578** in the following tested applications.

The application notes include recommended starting dilutions; optimal dilutions/concentrations should be determined by the end user.

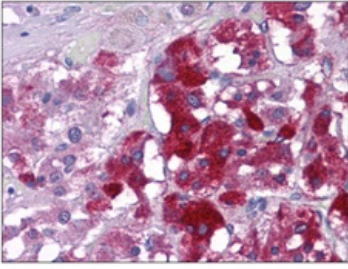
应用	Ab评论	说明
WB		Use a concentration of 1 - 2 µg/ml. Predicted molecular weight: 57 kDa.

应用	Ab评论	说明
ELISA		Use at an assay dependent concentration.
IHC-P		Use a concentration of 5 µg/ml. Perform heat mediated antigen retrieval with citrate buffer pH 6 before commencing with IHC staining protocol.

靶标

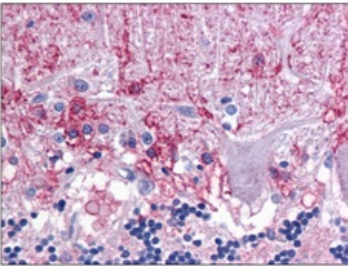
功能	<p>Functions in nuclear protein import as an adapter protein for nuclear receptor KPNB1. Binds specifically and directly to substrates containing either a simple or bipartite NLS motif. Docking of the importin/substrate complex to the nuclear pore complex (NPC) is mediated by KPNB1 through binding to nucleoporin FxFG repeats and the complex is subsequently translocated through the pore by an energy requiring, Ran-dependent mechanism. At the nucleoplasmic side of the NPC, Ran binds to importin-beta and the three components separate and importin-alpha and -beta are re-exported from the nucleus to the cytoplasm where GTP hydrolysis releases Ran from importin. The directionality of nuclear import is thought to be conferred by an asymmetric distribution of the GTP- and GDP-bound forms of Ran between the cytoplasm and nucleus. In vitro, mediates the nuclear import of human cytomegalovirus UL84 by recognizing a non-classical NLS. Recognizes NLSs of influenza A virus nucleoprotein probably through ARM repeats 7-9.</p>
组织特异性	Ubiquitous. Highest levels in heart and skeletal muscle.
序列相似性	<p>Belongs to the importin alpha family.</p> <p>Contains 10 ARM repeats.</p> <p>Contains 1 IBB domain.</p>
结构域	<p>Consists of an N-terminal hydrophilic region, a hydrophobic central region composed of 10 repeats, and a short hydrophilic C-terminus. The N-terminal hydrophilic region contains the importin beta binding domain (IBB domain), which is sufficient for binding importin beta and essential for nuclear protein import.</p> <p>The IBB domain is thought to act as an intrasteric autoregulatory sequence by interacting with the internal autoinhibitory NLS. Binding of KPNB1 probably overlaps the internal NLS and contributes to a high affinity for cytoplasmic NLS-containing cargo substrates. After dissociation of the importin/substrate complex in the nucleus the internal autoinhibitory NLS contributes to a low affinity for nuclear NLS-containing proteins.</p> <p>The major and minor NLS binding sites are mainly involved in recognition of simple or bipartite NLS motifs. Structurally located within in a helical surface groove they contain several conserved Trp and Asn residues of the corresponding third helices (H3) of ARM repeats which mainly contribute to binding.</p>
细胞定位	Cytoplasm. Nucleus.

图片



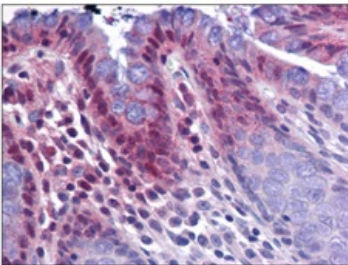
Immunohistochemistry (Formalin/PFA-fixed paraffin-embedded sections) - Anti-KPNA3 antibody (ab117578)

Immunohistochemical analysis of KPNA3 expression in Formalin-Fixed, Paraffin-Embedded Human Adrenal using 5 µg/ml ab117578.



Immunohistochemistry (Formalin/PFA-fixed paraffin-embedded sections) - Anti-KPNA3 antibody (ab117578)

Immunohistochemical analysis of KPNA3 expression in Formalin-Fixed, Paraffin-Embedded Human Brain, Cerebellum, using 5 µg/ml ab117578.



Immunohistochemistry (Formalin/PFA-fixed paraffin-embedded sections) - Anti-KPNA3 antibody (ab117578)

Immunohistochemical analysis of KPNA3 expression in Formalin-Fixed, Paraffin-Embedded Human Colon using 5 µg/ml ab117578.

Please note: All products are "FOR RESEARCH USE ONLY AND ARE NOT INTENDED FOR DIAGNOSTIC OR THERAPEUTIC USE"

Our Abpromise to you: Quality guaranteed and expert technical support

- Replacement or refund for products not performing as stated on the datasheet
- Valid for 12 months from date of delivery
- Response to your inquiry within 24 hours

- We provide support in Chinese, English, French, German, Japanese and Spanish
- Extensive multi-media technical resources to help you
- We investigate all quality concerns to ensure our products perform to the highest standards

If the product does not perform as described on this datasheet, we will offer a refund or replacement. For full details of the Abpromise, please visit <https://www.abcam.cn/abpromise> or contact our technical team.

Terms and conditions

- Guarantee only valid for products bought direct from Abcam or one of our authorized distributors