


Product datasheet

Anti-KIR2DL4 antibody ab100996

1 图像

概述

产品名称	Anti-KIR2DL4抗体
描述	兔多克隆抗体to KIR2DL4
宿主	Rabbit
经测试应用	适用于: WB
种属反应性	与反应: Human 预测可用于: Chimpanzee, Macaque monkey, Gorilla, Orangutan 
免疫原	Synthetic peptide conjugated to KLH derived from within residues 50 - 150 of Human KIR2DL4. 参阅Abcam的专有抗源政策
阳性对照	This antibody gave a positive signal in Human spleen tissue lysate as well as the following whole cell lysates: MDA MB 231; MDA MB 361; HeLa.

性能

形式	Liquid
存放说明	Shipped at 4°C. Store at +4°C short term (1-2 weeks). Upon delivery aliquot. Store at -20°C or -80°C. Avoid freeze / thaw cycle.
存储溶液	pH: 7.40 Preservative: 0.02% Sodium azide Constituent: PBS Note: Batches of this product that have a concentration < 1mg/ml may have BSA added as a stabilising agent. If you would like information about the formulation of a specific lot, please contact our scientific support team who will be happy to help.
纯度	Immunogen affinity purified
克隆	多克隆
同种型	IgG

应用

Our [Abpromise guarantee](#) covers the use of **ab100996** in the following tested applications.

The application notes include recommended starting dilutions; optimal dilutions/concentrations should be determined by the end user.

应用	Ab评论	说明
WB		Use a concentration of 1 µg/ml. Detects a band of approximately 39 kDa (predicted molecular weight: 41 kDa).

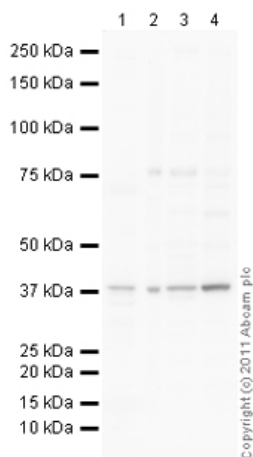
---

## 靶标

功能	Receptor on natural killer (NK) cells for HLA-C alleles. Inhibits the activity of NK cells thus preventing cell lysis.
序列相似性	Belongs to the immunoglobulin superfamily. Contains 2 Ig-like C2-type (immunoglobulin-like) domains.
细胞定位	Cell membrane.

---

## 图片



Western blot - Anti-KIR2DL4 antibody (ab100996)

**All lanes :** Anti-KIR2DL4 antibody

(ab100996) at 1 µg/ml

**Lane 1 :** Human spleen tissue lysate - total protein (ab29699)

**Lane 2 :** MDA-MB-231 (Human breast adenocarcinoma cell line) Whole Cell Lysate

**Lane 3 :** MDA-MB-361 (Human breast adenocarcinoma cell line) Whole Cell Lysate

**Lane 4 :** HeLa (Human epithelial carcinoma cell line) Whole Cell Lysate

Lysates/proteins at 10 µg per lane.

### Secondary

**All lanes :** Goat Anti-Rabbit IgG H&L (HRP)

preadsorbed (ab97080) at 1/5000 dilution

Developed using the ECL technique.

Performed under reducing conditions.

**Predicted band size:** 41 kDa

**Observed band size:** 39 kDa

**Additional bands at:** 75 kDa. We are unsure as to the identity of these extra bands.

**Exposure time:** 12 minutes

The band observed at 39 kDa could potentially be a cleaved form of KIR2DL4 due to the presence of a 21 amino acid signal peptide.

**Please note:** All products are "FOR RESEARCH USE ONLY AND ARE NOT INTENDED FOR DIAGNOSTIC OR THERAPEUTIC USE"

### Our Abpromise to you: Quality guaranteed and expert technical support

- Replacement or refund for products not performing as stated on the datasheet
- Valid for 12 months from date of delivery
- Response to your inquiry within 24 hours
- We provide support in Chinese, English, French, German, Japanese and Spanish

- Extensive multi-media technical resources to help you
- We investigate all quality concerns to ensure our products perform to the highest standards

If the product does not perform as described on this datasheet, we will offer a refund or replacement. For full details of the Abpromise, please visit <https://www.abcam.cn/abpromise> or contact our technical team.

### **Terms and conditions**

---

- Guarantee only valid for products bought direct from Abcam or one of our authorized distributors