


Product datasheet

Anti-KIAA0528 antibody ab101493

2 图像

概述

产品名称	Anti-KIAA0528抗体
描述	兔多克隆抗体to KIAA0528
宿主	Rabbit
经测试应用	适用于: IHC-P
种属反应性	与反应: Human 预测可用于: Mouse, Rat, Rabbit, Horse, Chicken, Guinea pig, Cow, Dog, Pig, Xenopus laevis, Chimpanzee, Zebrafish, Rhesus monkey, Gorilla, Sea urchin, Orangutan, Xenopus tropicalis 
免疫原	Synthetic peptide, corresponding to a region within amino acids 375-425 of Human KIAA0528 (NP_055617.1).
阳性对照	Human Breast Carcinoma and Prostate Carcinoma.

性能

形式	Liquid
存放说明	Shipped at 4°C. Upon delivery aliquot and store at -20°C. Avoid freeze / thaw cycles.
存储溶液	Preservative: 0.09% Sodium azide Constituents: 0.1% BSA, Tris buffered saline
纯度	Immunogen affinity purified
克隆	多克隆
同种型	IgG

应用

Our [Abpromise guarantee](#) covers the use of **ab101493** in the following tested applications.

The application notes include recommended starting dilutions; optimal dilutions/concentrations should be determined by the end user.

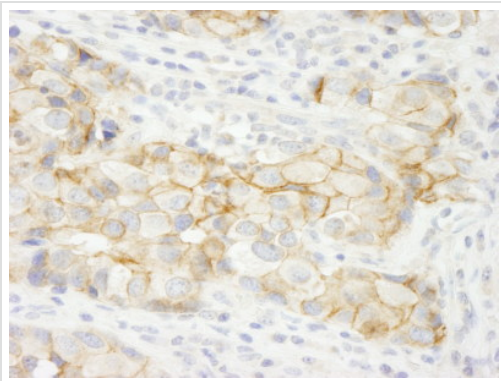
应用	Ab评论	说明
IHC-P		1/100 - 1/500. Antigen retrieval is recommended. Antigen retrieval with citrate buffer will enhance staining.

## 靶标

### 相关性

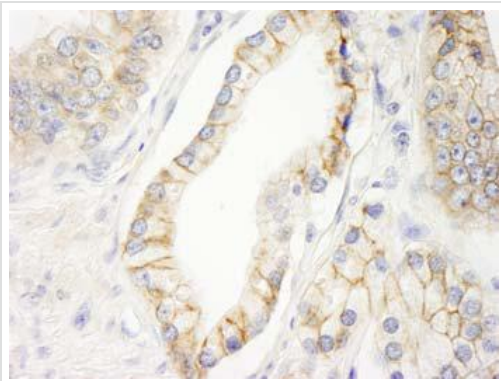
KIAA0528 is a protein that was first identified in the in silico analysis of long cDNAs isolated in the Kazusa cDNA sequencing project. The function of KIAA0528 has not been characterized. By similarity KO528 contains a C2 domain, a domain that is found in proteins that bind phospholipids. The C2 domain is also present in a family of proteins involved in synaptic vesicle trafficking; thus, the function of KIAA0528 is predicted to be involved in intracellular transport.

### 图片



Immunohistochemistry (Formalin/PFA-fixed paraffin-embedded sections) - Anti-KIAA0528 antibody (ab101493)

ab101493 at 1/250 dilution staining KIAA0528 in a formalin-fixed, paraffin-embedded section of human breast carcinoma by Immunohistochemistry (Formalin/PFA-fixed paraffin-embedded sections). Detection utilised DAB.



Immunohistochemistry (Formalin/PFA-fixed paraffin-embedded sections) - Anti-KIAA0528 antibody (ab101493)

ab101493 at 1/250 dilution staining KIAA0528 in a formalin-fixed, paraffin-embedded section of human prostate carcinoma by Immunohistochemistry (Formalin/PFA-fixed paraffin-embedded sections). Detection utilised DAB.

**Please note:** All products are "FOR RESEARCH USE ONLY AND ARE NOT INTENDED FOR DIAGNOSTIC OR THERAPEUTIC USE"

### Our Abpromise to you: Quality guaranteed and expert technical support

- Replacement or refund for products not performing as stated on the datasheet
- Valid for 12 months from date of delivery
- Response to your inquiry within 24 hours

- We provide support in Chinese, English, French, German, Japanese and Spanish
- Extensive multi-media technical resources to help you
- We investigate all quality concerns to ensure our products perform to the highest standards

If the product does not perform as described on this datasheet, we will offer a refund or replacement. For full details of the Abpromise, please visit <https://www.abcam.cn/abpromise> or contact our technical team.

### **Terms and conditions**

---

- Guarantee only valid for products bought direct from Abcam or one of our authorized distributors