

Product datasheet

Anti-KAT13D / CLOCK antibody ab65033

1 Abreviews 2 References 2 图像

概述

产品名称	Anti-KAT13D / CLOCK抗体
描述	兔多克隆抗体to KAT13D / CLOCK
宿主	Rabbit
特异性	ab65033 detects endogenous levels of total KAT13D / CLOCK protein.
经测试应用	适用于: ELISA, IHC-P, WB
种属反应性	与反应: Human 预测可用于: Mouse, Rat
免疫原	Synthetic peptide derived from an internal sequence of human KAT13D/ CLOCK
阳性对照	IHC-P: Human skeletal muscle tissue. WB: HUVEC cell extracts.

性能

形式	Liquid
存放说明	Shipped at 4°C. Store at -20°C. Stable for 12 months at -20°C.
存储溶液	Preservative: 0.02% Sodium Azide Constituents: 50% Glycerol, PBS (without Mg ²⁺ and Ca ²⁺), 150mM Sodium chloride, pH 7.4
纯度	Immunogen affinity purified
纯化说明	ab65033 was affinity purified from rabbit antiserum by affinity chromatography using epitope specific immunogen.
克隆	多克隆
同种型	IgG

应用

Our [Abpromise guarantee](#) covers the use of **ab65033** in the following tested applications.

The application notes include recommended starting dilutions; optimal dilutions/concentrations should be determined by the end user.

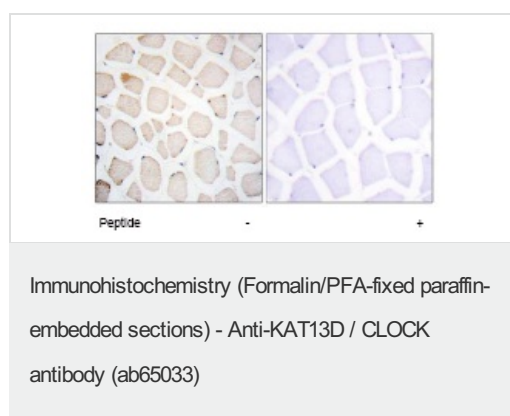
应用	Ab评论	说明
ELISA		1/20000.

应用	Ab评论	说明
IHC-P		1/50 - 1/100.
WB		1/500 - 1/1000. Detects a band of approximately 95 kDa (predicted molecular weight: 95 kDa).

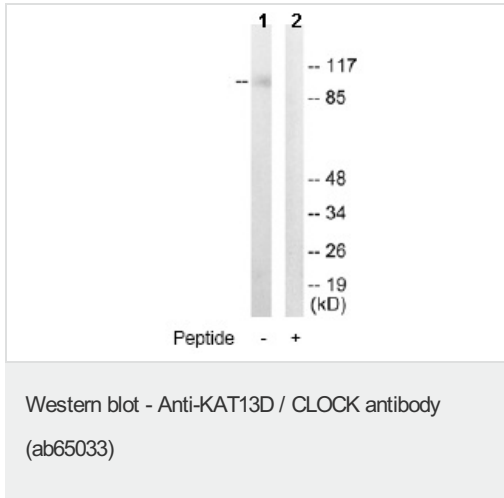
靶标

功能	ARNTL/2-CLOCK heterodimers activate E-box element (3'-CACGTG-5') transcription of a number of proteins of the circadian clock. Activates transcription of PER1 and PER2. This transcription is inhibited in a feedback loop by PER and CRY proteins. Has intrinsic histone acetyltransferase activity and this enzymatic function contributes to chromatin-remodeling events implicated in circadian control of gene expression (By similarity). Acetylates primarily histones H3 and H4 (By similarity). Acetylates also a non-histone substrate: ARNTL.
组织特异性	Expressed in all tissues examined including spleen, thymus, prostate, testis, ovary, small intestine, colon, leukocytes, heart, brain, placenta, lung, liver, skeletal muscle, kidney and pancreas. Highest levels in testis and skeletal muscle. Low levels in thymus, lung and liver. Expressed in all brain regions with highest levels in cerebellum. Highly expressed in the suprachiasmatic nucleus (SCN).
序列相似性	Contains 1 basic helix-loop-helix (bHLH) domain. Contains 1 PAC (PAS-associated C-terminal) domain. Contains 2 PAS (PER-ARNT-SIM) domains.
翻译后修饰	Phosphorylation is dependent on CLOCK-ARNTL heterodimer formation.
细胞定位	Cytoplasm. Nucleus. Shuffling between the cytoplasm and the nucleus is under circadian regulation and is ARNTL-dependent. Phosphorylated form located in the nucleus.

图片



ab65033, at a 1/50 dilution, staining KAT13D / CLOCK in paraffin embedded human skeletal muscle tissue by Immunohistochemistry in the absence or presence of the immunising peptide.



All lanes : Anti-KAT13D / CLOCK antibody
(ab65033) at 1/500 dilution

Lane 1 : HUVEC cell extract

Lane 2 : HUVEC cell extract with immunising
peptide at 5 µg

Lysates/proteins at 5 µg per lane.

Predicted band size: 95 kDa

Observed band size: 95 kDa

Please note: All products are "FOR RESEARCH USE ONLY AND ARE NOT INTENDED FOR DIAGNOSTIC OR THERAPEUTIC USE"

Our Abpromise to you: Quality guaranteed and expert technical support

- Replacement or refund for products not performing as stated on the datasheet
- Valid for 12 months from date of delivery
- Response to your inquiry within 24 hours
- We provide support in Chinese, English, French, German, Japanese and Spanish
- Extensive multi-media technical resources to help you
- We investigate all quality concerns to ensure our products perform to the highest standards

If the product does not perform as described on this datasheet, we will offer a refund or replacement. For full details of the Abpromise, please visit <https://www.abcam.cn/abpromise> or contact our technical team.

Terms and conditions

- Guarantee only valid for products bought direct from Abcam or one of our authorized distributors