

Product datasheet

Anti-INSL4 antibody ab75061

2 图像

概述

产品名称	Anti-INSL4抗体
描述	兔多克隆抗体to INSL4
宿主	Rabbit
特异性	ab75061 detects endogenous levels of total INSL4 protein.
经测试应用	适用于: WB, ELISA, ICC/IF
种属反应性	与反应: Human
免疫原	Synthetic peptide derived from internal region of human INSL4.
阳性对照	Extracts from HT-29 cells and A549 cells

性能

形式	Liquid
存放说明	Shipped at 4°C. Upon delivery aliquot and store at -20°C. Avoid freeze / thaw cycles.
存储溶液	pH: 7.40 Preservative: 0.02% Sodium azide Constituents: 50% Glycerol, 0.87% Sodium chloride, PBS
纯度	Immunogen affinity purified
纯化说明	ab75061 was purified using an epitope-specific immunogen.
克隆	多克隆
同种型	IgG

应用

Our [Abpromise guarantee](#) covers the use of **ab75061** in the following tested applications.

The application notes include recommended starting dilutions; optimal dilutions/concentrations should be determined by the end user.

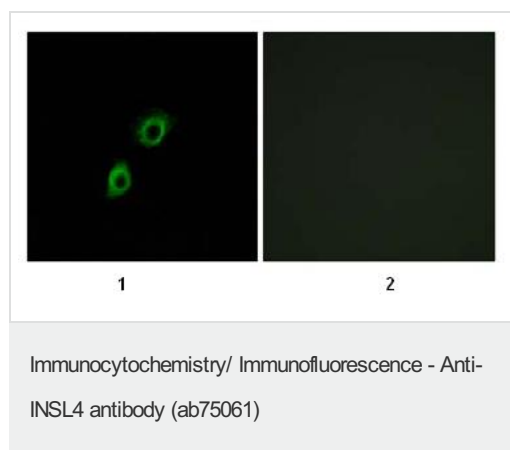
应用	Ab评论	说明
WB		1/500 - 1/1000. Predicted molecular weight: 15 kDa.

应用	Ab评论	说明
ELISA		1/20000.
ICC/IF		1/500 - 1/1000.

## 靶标

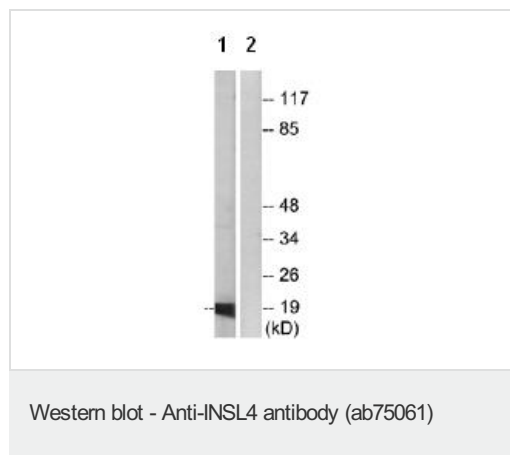
<b>功能</b>	May play an important role in trophoblast development and in the regulation of bone formation.
<b>组织特异性</b>	Expressed in placenta, uterus and in fetal perichondrium. Expression levels were increased in both early placentas and molar pregnancies and were reduced in choriocarcinoma cells.
<b>序列相似性</b>	Belongs to the insulin family.
<b>发展阶段</b>	Highly expressed in the early placenta. Expression of epil peptides in the villous cytotrophoblast is different from that displayed by the syncytiotrophoblast. In fetal tissues it was identified in the perichondrium of all four limbs, vertebrae, and ribs. It was abundant in interbone ligaments.
<b>细胞定位</b>	Secreted.

## 图片



ab75061, at 1/500 dilution, staining of A549 cells using Immunofluorescence analysis.

- 1) Without immunising peptide
- 2) With immunising peptide



**All lanes** : Anti-INSL4 antibody (ab75061) at 1/500 dilution

**Lane 1** : extracts from HT-29 cells

**Lane 2** : extracts from HT-29 cells with immunising peptide at 5 µg

Lysates/proteins at 5 µg per lane.

**Predicted band size:** 15 kDa

**Observed band size:** 19 kDa

**Please note:** All products are "FOR RESEARCH USE ONLY AND ARE NOT INTENDED FOR DIAGNOSTIC OR THERAPEUTIC USE"

### **Our Abpromise to you: Quality guaranteed and expert technical support**

---

- Replacement or refund for products not performing as stated on the datasheet
- Valid for 12 months from date of delivery
- Response to your inquiry within 24 hours
  
- We provide support in Chinese, English, French, German, Japanese and Spanish
- Extensive multi-media technical resources to help you
- We investigate all quality concerns to ensure our products perform to the highest standards

If the product does not perform as described on this datasheet, we will offer a refund or replacement. For full details of the Abpromise, please visit <https://www.abcam.cn/abpromise> or contact our technical team.

### **Terms and conditions**

---

- Guarantee only valid for products bought direct from Abcam or one of our authorized distributors