

Product datasheet

Anti-IL2 Receptor alpha antibody [B-B10] (Phycoerythrin)
ab27306

1 References 1 图像

概述

产品名称	Anti-IL2 Receptor alpha抗体[B-B10] (Phycoerythrin)
描述	小鼠单克隆抗体[B-B10] to IL2 Receptor alpha (Phycoerythrin)
宿主	Mouse
偶联物	Phycoerythrin. Ex: 488nm, Em: 575nm
特异性	Recognises the Interleukin 2 Receptor a chain (IL-2 Ra)
经测试应用	适用于: Flow Cyt
种属反应性	与反应: Human
免疫原	Tissue/ cell preparation. PHA Activated T cells.
阳性对照	PHA activated lymphocytes

性能

形式	Liquid
存放说明	Shipped at 4°C. Store at +4°C.
存储溶液	Preservative: 0.1% Sodium Azide Constituents: 1% BSA, PBS
纯度	Ion Exchange Chromatography
克隆	单克隆
克隆编号	B-B10
骨髓瘤	x63-Ag8.653
同种型	IgG1

应用

Our [Abpromise guarantee](#) covers the use of **ab27306** in the following tested applications.

The application notes include recommended starting dilutions; optimal dilutions/concentrations should be determined by the end user.

应用	Ab评论	说明
----	------	----

Flow Cyt

应用说明

Flow Cyt: Use 10 µl to label 10⁶ cells or 100 µl of whole blood.

Not yet tested in other applications.

Optimal dilutions/concentrations should be determined by the end user.

靶标

功能

Receptor for interleukin-2.

疾病相关

Genetic variations in IL2RA are associated with susceptibility to diabetes mellitus insulin-dependent type 10 (IDDM10) [MIM:601942]. A multifactorial disorder of glucose homeostasis that is characterized by susceptibility to ketoacidosis in the absence of insulin therapy. Clinical features are polydipsia, polyphagia and polyuria which result from hyperglycemia-induced osmotic diuresis and secondary thirst. These derangements result in long-term complications that affect the eyes, kidneys, nerves, and blood vessels.

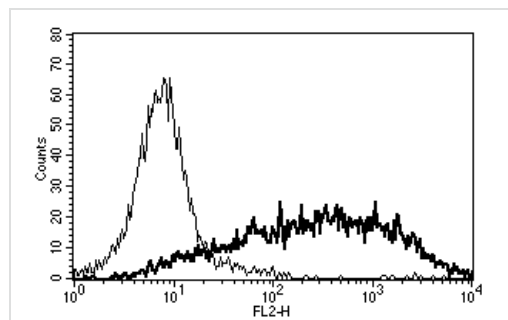
序列相似性

Contains 2 Sushi (CCP/SCR) domains.

细胞定位

Membrane.

图片



A typical staining pattern with ab27306 of PHA activated lymphocytes.

Flow Cytometry - Anti-IL2 Receptor alpha antibody [B-B10] (Phycoerythrin) (ab27306)

Please note: All products are "FOR RESEARCH USE ONLY AND ARE NOT INTENDED FOR DIAGNOSTIC OR THERAPEUTIC USE"

Our Promise to you: Quality guaranteed and expert technical support

- Replacement or refund for products not performing as stated on the datasheet
- Valid for 12 months from date of delivery
- Response to your inquiry within 24 hours
- We provide support in Chinese, English, French, German, Japanese and Spanish

- Extensive multi-media technical resources to help you
- We investigate all quality concerns to ensure our products perform to the highest standards

If the product does not perform as described on this datasheet, we will offer a refund or replacement. For full details of the Abpromise, please visit <https://www.abcam.cn/abpromise> or contact our technical team.

Terms and conditions

- Guarantee only valid for products bought direct from Abcam or one of our authorized distributors