

Product datasheet

Anti-HSD11B1 antibody ab109554

★★★★☆ 1 Abreviews 1 References 1 图像

概述

产品名称	Anti-HSD11B1抗体
描述	兔多克隆抗体to HSD11B1
宿主	Rabbit
经测试应用	适用于: WB, IHC-P, IHC-Fr, ICC
种属反应性	与反应: Mouse, Rat, Human 预测可用于: Rabbit, Dog, Pig, Cynomolgus monkey
免疫原	Synthetic peptide: DDIHHVRKSM EVNFL , corresponding to internal sequence amino acids 131-145 of Human HSD11B1. Run BLAST with Run BLAST with
阳性对照	HeLa cell lysate, SMMC cell lysate, Raji cell lysate, Colo320 cell lysate.

性能

形式	Liquid
存放说明	Shipped at 4°C. Upon delivery aliquot and store at -20°C. Avoid freeze / thaw cycles.
存储溶液	Preservatives: 0.025% Thimerosal (merthiolate), 0.025% Sodium azide Constituents: 2.5% BSA, 0.45% Sodium chloride, 0.1% Dibasic monohydrogen sodium phosphate
纯度	Immunogen affinity purified
克隆	多克隆
同种型	IgG

应用

Our [Abpromise guarantee](#) covers the use of **ab109554** in the following tested applications.

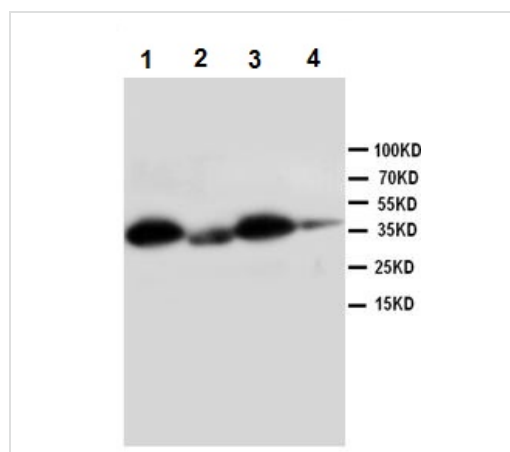
The application notes include recommended starting dilutions; optimal dilutions/concentrations should be determined by the end user.

应用	Ab评论	说明
WB	★★★★☆	Use a concentration of 1 µg/ml. Predicted molecular weight: 32 kDa.
IHC-P		Use a concentration of 1 µg/ml.
IHC-Fr		Use a concentration of 1 µg/ml.
ICC		Use a concentration of 1 µg/ml.

靶标

功能	Catalyzes reversibly the conversion of cortisol to the inactive metabolite cortisone. Catalyzes reversibly the conversion of 7-ketocholesterol to 7-beta-hydroxycholesterol. In intact cells, the reaction runs only in one direction, from 7-ketocholesterol to 7-beta-hydroxycholesterol.
组织特异性	Widely expressed. Highest expression in liver.
疾病相关	Defects in HSD11B1 are a cause of cortisone reductase deficiency (CRD) [MIM:604931]. In CRD, activation of cortisone to cortisol does not occur, resulting in adrenocorticotropin-mediated androgen excess and a phenotype resembling polycystic ovary syndrome (PCOS).
序列相似性	Belongs to the short-chain dehydrogenases/reductases (SDR) family.
翻译后修饰	Glycosylated.
细胞定位	Endoplasmic reticulum membrane.

图片



Western blot - Anti-HSD11B1 antibody (ab109554)

All lanes : Anti-HSD11B1 antibody (ab109554) at 1 µg/ml

Lane 1 : HeLa whole cell lysate

Lane 2 : SMMC whole cell lysate

Lane 3 : Raji whole cell lysate

Lane 4 : Colo320 whole cell lysate

Predicted band size: 32 kDa

Please note: All products are "FOR RESEARCH USE ONLY AND ARE NOT INTENDED FOR DIAGNOSTIC OR THERAPEUTIC USE"

Our Abpromise to you: Quality guaranteed and expert technical support

- Replacement or refund for products not performing as stated on the datasheet

- Valid for 12 months from date of delivery
- Response to your inquiry within 24 hours

- We provide support in Chinese, English, French, German, Japanese and Spanish
- Extensive multi-media technical resources to help you
- We investigate all quality concerns to ensure our products perform to the highest standards

If the product does not perform as described on this datasheet, we will offer a refund or replacement. For full details of the Abpromise, please visit <https://www.abcam.cn/abpromise> or contact our technical team.

Terms and conditions

- Guarantee only valid for products bought direct from Abcam or one of our authorized distributors