

Product datasheet

Goat Anti-Rat IgG H&L (HRP) ab97057

★★★★★ 5 Abreviews 16 References 2 图像

概述

产品名称	山羊抗大鼠IgG H&L (HRP)
宿主	Goat
靶标种属	Rat
特异性	By immunoelectrophoresis and ELISA this antibody reacts specifically with Rat IgG and with light chains common to other Rat immunoglobulins. No antibody was detected against non-immunoglobulin serum proteins.
经测试应用	适用于: ICC, IHC-P, ELISA, WB
偶联物	HRP

性能

形式	Liquid
存放说明	Shipped at 4°C. Store at +4°C.
存储溶液	Preservative: 0.1% Proclin Constituents: 0.2% BSA, PBS
纯度	Immunogen affinity purified
纯化说明	This antibody was isolated by affinity chromatography using antigen coupled to agarose beads and conjugated to Horse Radish Peroxidase (HRP).
共轭说明	Molar enzyme/ antibody protein ratio is 4:1
克隆	多克隆
同种型	IgG
常规说明	Part of the AbExcel range.

应用

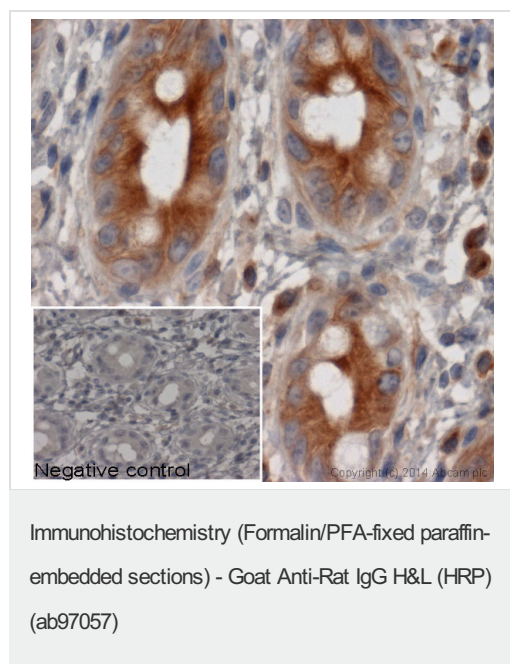
Our [Abpromise guarantee](#) covers the use of **ab97057** in the following tested applications.

The application notes include recommended starting dilutions; optimal dilutions/concentrations should be determined by the end user.

应用	Ab评论	说明
ICC		Use at an assay dependent dilution.

应用	Ab评论	说明
IHC-P	★★★★★	1/200 - 1/5000.
ELISA		1/10000 - 1/100000. (as primary)
WB	★★★★★	1/2000 - 1/20000. Colorimetric: Use 1/5000-1/30000, Chemiluminescent: use 1/10000-1/50000

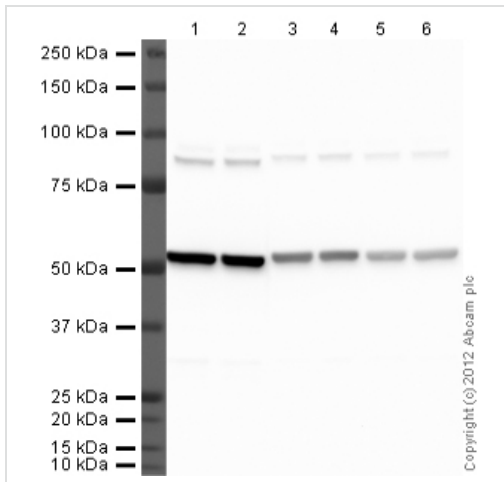
图片



IHC image of alpha tubulin staining in human colon formalin fixed paraffin embedded tissue section*. The section was pre-treated using pressure cooker heat mediated antigen retrieval with sodium citrate buffer (pH6) for 30mins. The section was incubated with [ab64332](#), 5µg/ml overnight at +4°C. An HRP-conjugated secondary ([ab97057](#), 1/200 dilution) was used for 1hr at room temperature. The section was counterstained with haematoxylin and mounted with DPX.

The inset negative control image is taken from an identical assay without primary antibody.

*Tissue obtained from the Human Research Tissue Bank, supported by the NIHR Cambridge Biomedical Research Centre



Western blot - Goat polyclonal Secondary Antibody to Rat IgG - H&L (HRP) (ab97057)

All lanes : Anti-Tubulin antibody [YL1/2] - Loading Control (ab6160) at 1 µg/ml

Lanes 1-6: HeLa (Human epithelial carcinoma cell line) Whole Cell Lysate

Lysates/proteins at 20 µg per lane.

Secondary

Lanes 1 - 2 : Goat polyclonal Secondary Antibody to Rat IgG - H&L (HRP) (ab97057) at 1/2000 dilution

Lanes 3 - 4 : Goat polyclonal Secondary Antibody to Rat IgG - H&L (HRP) (ab97057) at 1/10000 dilution

Lanes 5 - 6 : Goat polyclonal Secondary Antibody to Rat IgG - H&L (HRP) (ab97057) at 1/20000 dilution

Developed using the ECL technique.

Performed under reducing conditions.

Predicted band size : 50 kDa

Observed band size : 52 kDa

Additional bands at : 85 kDa. We are unsure as to the identity of these extra bands.

<>

Please note: All products are "FOR RESEARCH USE ONLY AND ARE NOT INTENDED FOR DIAGNOSTIC OR THERAPEUTIC USE"

Our Promise to you: Quality guaranteed and expert technical support

- Replacement or refund for products not performing as stated on the datasheet
- Valid for 12 months from date of delivery
- Response to your inquiry within 24 hours
- We provide support in Chinese, English, French, German, Japanese and Spanish
- Extensive multi-media technical resources to help you
- We investigate all quality concerns to ensure our products perform to the highest standards

If the product does not perform as described on this datasheet, we will offer a refund or replacement. For full details of the Abpromise,

please visit <https://www.abcam.cn/abpromise> or contact our technical team.

Terms and conditions

- Guarantee only valid for products bought direct from Abcam or one of our authorized distributors