

Product datasheet

Anti-Glucose Transporter GLUT4 antibody [1F8] ab35826

6 References 1 图像

概述

产品名称	Anti-Glucose Transporter GLUT4抗体[1F8]
描述	小鼠单克隆抗体[1F8] to Glucose Transporter GLUT4
宿主	Mouse
特异性	This antibody is specific for the fat/muscle specific isoform of the Glucose Transporter GLUT4. We have data to indicate that this antibody may not cross react with Dog. However, this has not been conclusively tested and expression levels may vary in certain cell lines/tissues.
经测试应用	适用于: ICC/IF, IP, IHC-Fr, WB
种属反应性	与反应: Mouse, Rat, Rabbit, Human, Monkey
免疫原	Rat Glucose Transporter GLUT4 from partially purified vesicles.
表位	This antibody has been shown to recognise an epitope in the cytoplasmic portion of the molecule.

性能

形式	Liquid
存放说明	Shipped at 4°C. Upon delivery aliquot and store at -20°C. Avoid freeze / thaw cycles.
存储溶液	Preservative: 0.09% Sodium Azide Constituents: PBS, pH 7.2
纯度	Protein G purified
克隆	单克隆
克隆编号	1F8
同种型	IgG1

应用

Our [Abpromise guarantee](#) covers the use of **ab35826** in the following tested applications.

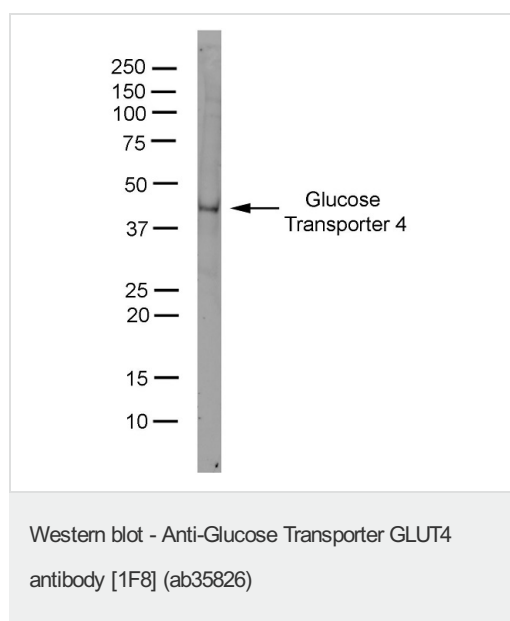
The application notes include recommended starting dilutions; optimal dilutions/concentrations should be determined by the end user.

应用	Ab 评论	说明
ICC/IF		Use a concentration of 2.5 - 5 µg/ml.
IP		Use at an assay dependent concentration. Membrane proteins at a concentration of 1-2 mg/ml can be immunoadsorbed using this antibody coupled with agarose beads.
IHC-Fr		Use at an assay dependent concentration. PubMed: 20418694
WB		Use at an assay dependent concentration. Predicted molecular weight: 56 kDa. 5 µg/ml of antibody will detect Glucose Transporter protein contained in 50-200 µg of solubilised membrane.

## 靶标

功能	Insulin-regulated facilitative glucose transporter.
组织特异性	Skeletal and cardiac muscles; brown and white fat.
疾病相关	Diabetes mellitus, non-insulin-dependent
序列相似性	Belongs to the major facilitator superfamily. Sugar transporter (TC 2.A.1.1) family. Glucose transporter subfamily.
翻译后修饰	Sumoylated.
细胞定位	Cell membrane. Endomembrane system. Cytoplasm, perinuclear region. Localizes primarily to the perinuclear region, undergoing continued recycling to the plasma membrane where it is rapidly reinternalized. The dileucine internalization motif is critical for intracellular sequestration.

## 图片



3T3-L1 lysate probed with Mouse anti Rat GLUT4 (ab35826) followed by Goat anti Mouse IgG:Dylight®800. Imaged using the LiCor Odyssey®

---

### **Our Abpromise to you: Quality guaranteed and expert technical support**

---

- Replacement or refund for products not performing as stated on the datasheet
- Valid for 12 months from date of delivery
- Response to your inquiry within 24 hours
  
- We provide support in Chinese, English, French, German, Japanese and Spanish
- Extensive multi-media technical resources to help you
- We investigate all quality concerns to ensure our products perform to the highest standards

If the product does not perform as described on this datasheet, we will offer a refund or replacement. For full details of the Abpromise, please visit <https://www.abcam.cn/abpromise> or contact our technical team.

### **Terms and conditions**

---

- Guarantee only valid for products bought direct from Abcam or one of our authorized distributors