


Product datasheet

Anti-GSE1 antibody ab83553

1 图像

概述

产品名称	Anti-GSE1 抗体
描述	兔多克隆抗体 to GSE1
宿主	Rabbit
经测试应用	适用于: ELISA, WB
种属反应性	与反应: Human 预测可用于: Mouse, Rat, Horse, Chicken, Guinea pig, Cow, Cat, Dog, Zebrafish 
免疫原	Synthetic peptide corresponding to a region within the N terminal amino acids 71-120 (EEPRGSSLSS ESSPVSSPAT NHSSPASTPK RVPMGPIIVP PGGHSVPSTP) of Human GSE1 (NP_055430)
阳性对照	721_B cell lysate.

性能

形式	Liquid
存放说明	Shipped at 4°C. Upon delivery aliquot and store at -20°C or -80°C. Avoid repeated freeze / thaw cycles.
存储溶液	Preservative: 0.09% Sodium azide Constituents: 2% Sucrose, PBS
纯度	Immunogen affinity purified
克隆	多克隆
同种型	IgG

应用

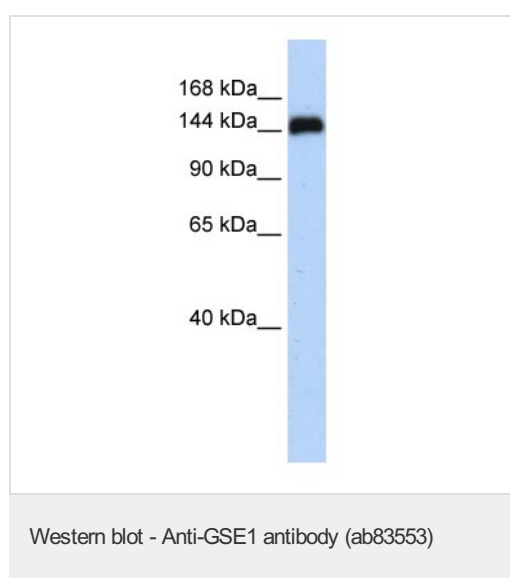
Our [Abpromise guarantee](#) covers the use of **ab83553** in the following tested applications.

The application notes include recommended starting dilutions; optimal dilutions/concentrations should be determined by the end user.

应用	Ab 评论	说明
ELISA		Use at an assay dependent concentration. ELISA titre using peptide based assay 1/312500.
WB		Use a concentration of 1 µg/ml. Detects a band of approximately 144 kDa (predicted molecular weight: 136 kDa). Good results were obtained when blocked with 5% non-fat dry milk in 0.05% PBS-T.

靶标

图片



Anti-GSE1 antibody (ab83553) at 1 µg/ml + 721_B cell lysate at 10 µg

Secondary

HRP conjugated anti-Rabbit IgG at 1/50000 dilution

Predicted band size: 136 kDa

Observed band size: 144 kDa

[why is the actual band size different from the predicted?](#)

Gel concentration 6-18%

Please note: All products are "FOR RESEARCH USE ONLY AND ARE NOT INTENDED FOR DIAGNOSTIC OR THERAPEUTIC USE"

Our Abpromise to you: Quality guaranteed and expert technical support

- Replacement or refund for products not performing as stated on the datasheet
- Valid for 12 months from date of delivery
- Response to your inquiry within 24 hours
- We provide support in Chinese, English, French, German, Japanese and Spanish
- Extensive multi-media technical resources to help you
- We investigate all quality concerns to ensure our products perform to the highest standards

If the product does not perform as described on this datasheet, we will offer a refund or replacement. For full details of the Abpromise, please visit <https://www.abcam.cn/abpromise> or contact our technical team.

Terms and conditions

- Guarantee only valid for products bought direct from Abcam or one of our authorized distributors