

## Product datasheet

# Anti-GSC antibody [EPR4847] ab109024

**重组 RabMAb**

1 Abreviews 1 图像

### 概述

<b>产品名称</b>	Anti-GSC抗体[EPR4847]
<b>描述</b>	兔单克隆抗体[EPR4847] to GSC
<b>宿主</b>	Rabbit
<b>特异性</b>	Negative WB result with mouse brain, heart, kidney and spleen tissue lysates, but there is a feedback this antibody detected mouse GSC with NMuMG (mouse mammary gland, normal epithelial) cell lysate. Other samples has not been tested.
<b>经测试应用</b>	<b>适用于:</b> WB, IP <b>不适用于:</b> Flow Cyt, ICC or IHC-P
<b>种属反应性</b>	<b>与反应:</b> Human
<b>免疫原</b>	Synthetic peptide within Human GSC. The exact sequence is proprietary.
<b>阳性对照</b>	Human brain, HT29, MCF7, and HepG2 lysates.
<b>常规说明</b>	Rat: We have preliminary internal testing data to indicate this antibody may not react with this species. Please contact us for more information.

Our RabMAb<sup>®</sup> technology is a patented hybridoma-based technology for making rabbit monoclonal antibodies. For details on our patents, please refer to [RabMAb<sup>®</sup> patents](#)

This product is a recombinant rabbit monoclonal antibody.

### 性能

<b>形式</b>	Liquid
<b>存放说明</b>	Shipped at 4°C. Store at -20°C. Stable for 12 months at -20°C.
<b>存储溶液</b>	pH: 7.20 Preservative: 0.05% Sodium azide Constituents: 0.1% BSA, 40% Glycerol, 9.85% Tris glycine, 50% Tissue culture supernatant
<b>纯度</b>	Tissue culture supernatant
<b>克隆</b>	单克隆
<b>克隆编号</b>	EPR4847
<b>同种型</b>	IgG

## 应用

Our [Abpromise guarantee](#) covers the use of **ab109024** in the following tested applications.

The application notes include recommended starting dilutions; optimal dilutions/concentrations should be determined by the end user.

应用	Ab评论	说明
WB		1/1000 - 1/10000. Detects a band of approximately 28 kDa (predicted molecular weight: 28 kDa).
IP		1/10 - 1/100.

**应用说明** Is unsuitable for Flow Cyt, ICC or IHC-P.

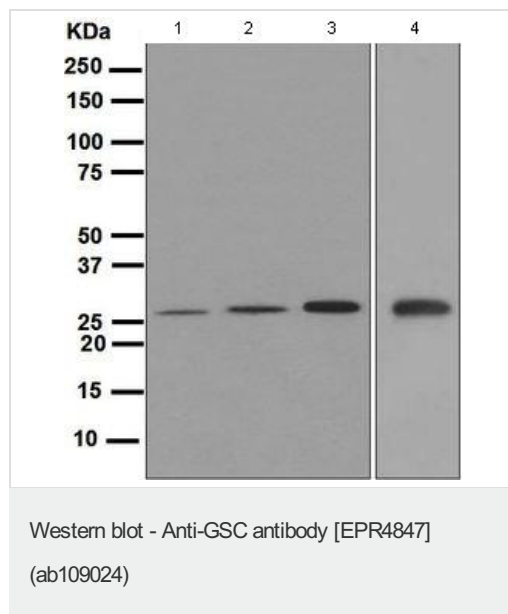
## 靶标

**功能** Regulates chordin (CHRD). May play a role in spatial programming within discrete embryonic fields or lineage compartments during organogenesis. In concert with NKX3-2, plays a role in defining the structural components of the middle ear; required for the development of the entire tympanic ring.

**序列相似性** Belongs to the paired homeobox family. Bicoid subfamily.  
Contains 1 homeobox DNA-binding domain.

**细胞定位** Nucleus.

## 图片



**All lanes :** Anti-GSC antibody [EPR4847] (ab109024) at 1/1000 dilution

**Lane 1 :** Human brain lysate

**Lane 2 :** HT29 lysate

**Lane 3 :** MCF7 lysate

**Lane 4 :** HepG2 lysate

Lysates/proteins at 10 µg per lane.

**Predicted band size:** 28 kDa

**Please note:** All products are "FOR RESEARCH USE ONLY AND ARE NOT INTENDED FOR DIAGNOSTIC OR THERAPEUTIC USE"

**Our Abpromise to you: Quality guaranteed and expert technical support**

- Replacement or refund for products not performing as stated on the datasheet
- Valid for 12 months from date of delivery
- Response to your inquiry within 24 hours
  
- We provide support in Chinese, English, French, German, Japanese and Spanish
- Extensive multi-media technical resources to help you
- We investigate all quality concerns to ensure our products perform to the highest standards

If the product does not perform as described on this datasheet, we will offer a refund or replacement. For full details of the Abpromise, please visit <https://www.abcam.cn/abpromise> or contact our technical team.

### **Terms and conditions**

---

- Guarantee only valid for products bought direct from Abcam or one of our authorized distributors