

Product datasheet

Anti-GH2 antibody ab62193

1 图像

概述

产品名称	Anti-GH2抗体
描述	兔多克隆抗体to GH2
宿主	Rabbit
经测试应用	适用于: WB
种属反应性	与反应: Human 预测可用于: Mouse, Rat, Sheep, Rabbit, Goat, Horse, Chicken, Cow, Cat, Pig, Chimpanzee, Spider monkey 
免疫原	A region within synthetic peptide: GIQTLMWRL E DGSPRTGQIF NQSYSKFDTK SHNDDALLKN YGLLYCFRKD, corresponding to internal sequence amino acids 131-180 of Human GH2 <a href="#">Run BLAST with ExPASy</a> <a href="#">Run BLAST with NCBI</a>
阳性对照	Human Placenta cell lysate.

性能

形式	Liquid
存放说明	Shipped at 4°C. Upon delivery aliquot and store at -20°C. Avoid freeze / thaw cycles.
存储溶液	Preservative: 0.09% Sodium azide Constituents: 2% Sucrose, PBS
纯度	Protein A purified
克隆	多克隆
同种型	IgG

应用

Our [Abpromise guarantee](#) covers the use of **ab62193** in the following tested applications.

The application notes include recommended starting dilutions; optimal dilutions/concentrations should be determined by the end user.

应用	Ab 评论	说明
----	-------	----

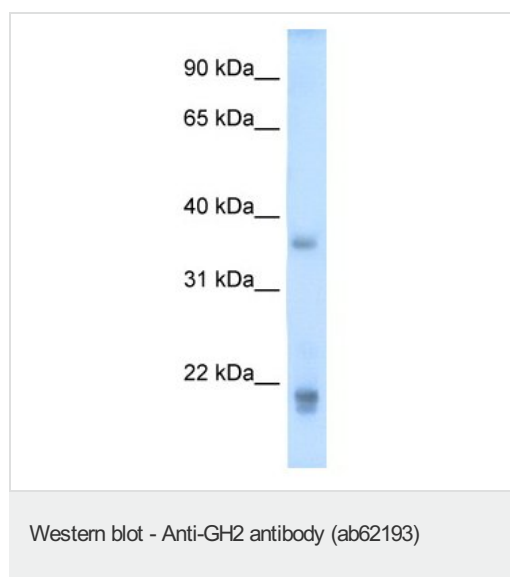
WB Use a concentration of 5 µg/ml. Detects a band of approximately 20, 37 kDa (predicted molecular weight: 23, 25 kDa). Good results were obtained when blocked with 5% non-fat dry milk in 0.05% PBS-T.

## 靶标

**相关性** Growth hormone 2 (GH2) is a member of the somatotropin/prolactin family of hormones which play an important role in growth control. The gene, along with four other related genes, is located at the growth hormone locus on chromosome 17 where they are interspersed in the same transcriptional orientation; an arrangement which is thought to have evolved by a series of gene duplications. The five genes share a remarkably high degree of sequence identity. Mutations in this gene lead to placental growth hormone/lactogen deficiency. The major role of GH2 in stimulating body growth is to stimulate the liver and other tissues to secrete IGF-1. It stimulates both the differentiation and proliferation of myoblasts. It also stimulates amino acid uptake and protein synthesis in muscle and other tissues.

**细胞定位** Secreted

## 图片



Anti-GH2 antibody (ab62193) at 5 µg/ml +  
Placenta cell lysate at 10 µg

### Secondary

HRP conjugated anti-Rabbit IgG 1/ 50,000 - 1/  
100,000 as second antibody.

**Predicted band size:** 23, 25 kDa

**Observed band size:** 20 & 37 kDa

**Please note:** All products are "FOR RESEARCH USE ONLY AND ARE NOT INTENDED FOR DIAGNOSTIC OR THERAPEUTIC USE"

## Our Abpromise to you: Quality guaranteed and expert technical support

- Replacement or refund for products not performing as stated on the datasheet
- Valid for 12 months from date of delivery
- Response to your inquiry within 24 hours
- We provide support in Chinese, English, French, German, Japanese and Spanish

- Extensive multi-media technical resources to help you
- We investigate all quality concerns to ensure our products perform to the highest standards

If the product does not perform as described on this datasheet, we will offer a refund or replacement. For full details of the Abpromise, please visit <https://www.abcam.cn/abpromise> or contact our technical team.

### **Terms and conditions**

---

- Guarantee only valid for products bought direct from Abcam or one of our authorized distributors