


Product datasheet

Anti-GABA A Receptor alpha 1 antibody ab65269

1 References 1 图像

概述

产品名称	Anti-GABA A Receptor alpha 1抗体
描述	兔多克隆抗体to GABA A Receptor alpha 1
宿主	Rabbit
经测试应用	适用于: IHC-P, WB
种属反应性	与反应: Human 预测可用于: Mouse, Rat, a wide range of other species 
免疫原	Synthetic peptide derived from human GABA A Receptor alpha 1 protein.

性能

形式	Liquid
存放说明	Shipped at 4°C. Store at +4°C short term (1-2 weeks). Upon delivery aliquot. Store at -20°C or -80°C. Avoid freeze / thaw cycle.
存储溶液	Preservative: None Constituents: Whole serum
纯度	Whole antiserum
克隆	多克隆
同种型	IgG

应用

Our [Abpromise guarantee](#) covers the use of **ab65269** in the following tested applications.

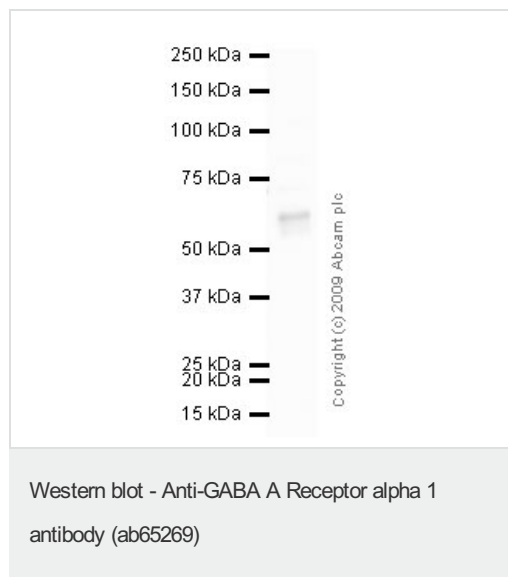
The application notes include recommended starting dilutions; optimal dilutions/concentrations should be determined by the end user.

应用	Ab评论	说明
IHC-P		Use at an assay dependent concentration.
WB		1/500 - 1/5000. Detects a band of approximately 52 kDa (predicted molecular weight: 52 kDa).

靶标

功能	GABA, the major inhibitory neurotransmitter in the vertebrate brain, mediates neuronal inhibition by binding to the GABA/benzodiazepine receptor and opening an integral chloride channel.
疾病相关	Defects in GABRA1 are the cause of childhood absence epilepsy type 4 (ECA4) [MIM:611136]. A subtype of idiopathic generalized epilepsy characterized by onset at age 6-7 years, frequent absence seizures (several per day) and bilateral, synchronous, symmetric 3-Hz spike waves on EEG. During adolescence, tonic-clonic and myoclonic seizures may develop. Absence seizures may either remit or persist into adulthood. Defects in GABRA1 are the cause of juvenile myoclonic epilepsy type 5 (EJM5) [MIM:611136]. A subtype of idiopathic generalized epilepsy. Patients have afebrile seizures only, with onset in adolescence (rather than in childhood) and myoclonic jerks which usually occur after awakening and are triggered by sleep deprivation and fatigue.
序列相似性	Belongs to the ligand-gated ion channel (TC 1.A.9) family. Gamma-aminobutyric acid receptor (TC 1.A.9.5) subfamily. GABRA1 sub-subfamily.
细胞定位	Cell junction > synapse > postsynaptic cell membrane. Cell membrane.

图片



Anti-GABA A Receptor alpha 1 antibody (ab65269) at 1/2000 dilution + Ramos (Human Burkitt's lymphoma cell line) Whole Cell Lysate at 10 µg

Secondary

Goat polyclonal to Rabbit IgG - H&L - Pre-Adsorbed (HRP) at 1/3000 dilution

Predicted band size: 52 kDa

Observed band size: 60 kDa

Please note: All products are "FOR RESEARCH USE ONLY AND ARE NOT INTENDED FOR DIAGNOSTIC OR THERAPEUTIC USE"

Our Abpromise to you: Quality guaranteed and expert technical support

- Replacement or refund for products not performing as stated on the datasheet
- Valid for 12 months from date of delivery
- Response to your inquiry within 24 hours
- We provide support in Chinese, English, French, German, Japanese and Spanish
- Extensive multi-media technical resources to help you
- We investigate all quality concerns to ensure our products perform to the highest standards

If the product does not perform as described on this datasheet, we will offer a refund or replacement. For full details of the Abpromise,

please visit <https://www.abcam.cn/abpromise> or contact our technical team.

Terms and conditions

- Guarantee only valid for products bought direct from Abcam or one of our authorized distributors