

Product datasheet

Anti-ERLEC1 antibody ab102046

1 References 1 图像

概述

产品名称	Anti-ERLEC1抗体
描述	兔多克隆抗体to ERLEC1
宿主	Rabbit
经测试应用	适用于: WB
种属反应性	与反应: Human 预测可用于: Mouse, Rat, Rabbit, Horse, Guinea pig, Cow, Cat, Dog, Pig
免疫原	Synthetic peptide corresponding to a region within internal sequence amino acids 359-408 (GKHVHQYHED KDSGKTSVVV GTWNQEEHIE WAKKNTARAY HLQDDGTQTV) of Human ERLEC1 (NP_056516). Run BLAST with ExPASy Run BLAST with NCBI
阳性对照	THP1 cell lysate

性能

形式	Liquid
存放说明	Shipped at 4°C. Upon delivery aliquot and store at -20°C. Avoid repeated freeze / thaw cycles.
存储溶液	Preservative: 0.09% Sodium azide Constituents: 2% Sucrose, PBS
纯度	Immunogen affinity purified
克隆	多克隆
同种型	IgG

应用

Our [Abpromise guarantee](#) covers the use of **ab102046** in the following tested applications.

The application notes include recommended starting dilutions; optimal dilutions/concentrations should be determined by the end user.

应用	Ab评论	说明

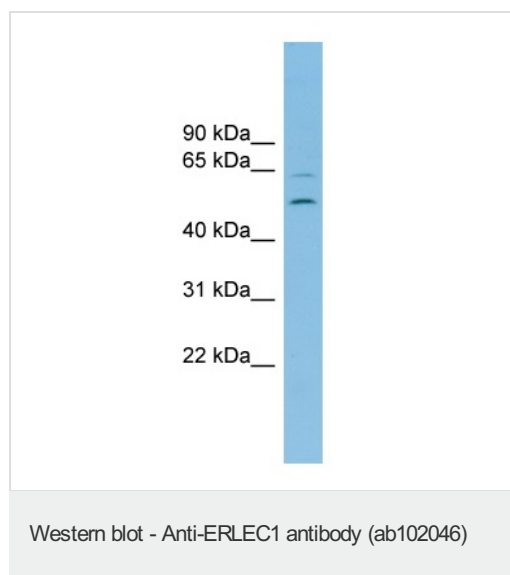
应用	Ab评论	说明
WB		Use a concentration of 1 µg/ml. Predicted molecular weight: 55 kDa. Good results were obtained when blocked with 5% non-fat dry milk in 0.05% PBS-T.

靶标

相关性 ERLEC1 is a probable lectin that binds selectively to improperly folded luminal proteins. ERLEC1 may function in endoplasmic reticulum quality control and endoplasmic reticulum-associated degradation (ERAD) of both non-glycosylated proteins and glycoproteins.

细胞定位 Endoplasmic reticulum lumen

图片



Anti-ERLEC1 antibody (ab102046) at 1 µg/ml
+ THP1 cell lysate at 10 µg

Predicted band size: 55 kDa

Gel concentration: 12%

Please note: All products are "FOR RESEARCH USE ONLY AND ARE NOT INTENDED FOR DIAGNOSTIC OR THERAPEUTIC USE"

Our Abpromise to you: Quality guaranteed and expert technical support

- Replacement or refund for products not performing as stated on the datasheet
- Valid for 12 months from date of delivery
- Response to your inquiry within 24 hours
- We provide support in Chinese, English, French, German, Japanese and Spanish
- Extensive multi-media technical resources to help you
- We investigate all quality concerns to ensure our products perform to the highest standards

If the product does not perform as described on this datasheet, we will offer a refund or replacement. For full details of the Abpromise, please visit <https://www.abcam.cn/abpromise> or contact our technical team.

Terms and conditions

- Guarantee only valid for products bought direct from Abcam or one of our authorized distributors