


## Product datasheet

# Anti-EEF2K (phospho S366) antibody ab51227

★★★★☆ 1 Abreviews 2 图像

### 概述

产品名称	Anti-EEF2K (phospho S366)抗体
描述	兔多克隆抗体to EEF2K (phospho S366)
宿主	Rabbit
特异性	This antibody detects endogenous levels of EEF2K only when phosphorylated at serine 366.
经测试应用	适用于: IHC-P, WB, ELISA
种属反应性	与反应: Human 预测可用于: Mouse, Rat 
免疫原	A synthesized phosphopeptide derived from human EEF2K around the phosphorylation site of serine 366 (T-L-S <sup>P</sup> -G-S).
阳性对照	Hela cells.

### 性能

形式	Liquid
存放说明	Shipped at 4°C. Upon delivery aliquot and store at -20°C. Avoid freeze / thaw cycles.
存储溶液	pH: 7.40 Preservative: 0.02% Sodium azide Constituents: 50% Glycerol, 0.87% Sodium chloride, PBS
纯度	Immunogen affinity purified
纯化说明	The antibody was affinity-purified from rabbit antiserum by affinity-chromatography using epitope-specific phosphopeptide. The antibody against non-phosphopeptide was removed by chromatography using non-phosphopeptide corresponding to the phosphorylation site.
克隆	多克隆
同种型	IgG

### 应用

Our [Abpromise guarantee](#) covers the use of **ab51227** in the following tested applications.

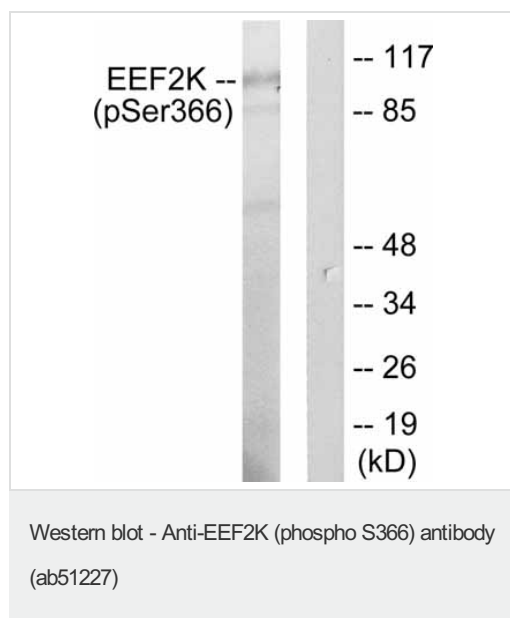
The application notes include recommended starting dilutions; optimal dilutions/concentrations should be determined by the end user.

应用	Ab评论	说明
IHC-P	★★★★☆	1/50 - 1/100.
WB		1/300 - 1/1000. Detects a band of approximately 100 kDa (predicted molecular weight: 95 kDa).
ELISA		1/40000.

## 靶标

<b>功能</b>	Phosphorylates eukaryotic elongation factor-2. Binds calmodulin.
<b>序列相似性</b>	Belongs to the protein kinase superfamily. Alpha-type protein kinase family. Contains 1 alpha-type protein kinase domain.

## 图片



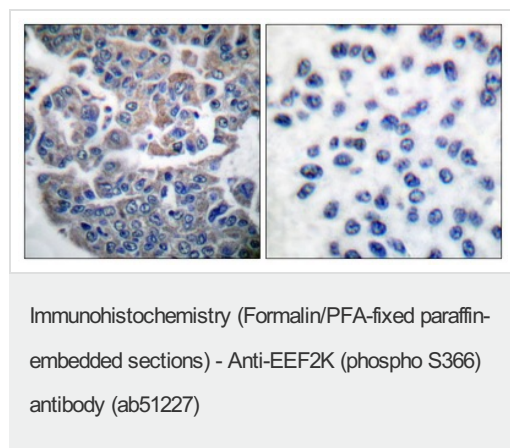
**All lanes :** Anti-EEF2K (phospho S366) antibody (ab51227) at 1/300 dilution

**Lane 1 :** Extracts of HeLa cells treated with 10% serum for 15mins.

**Lane 2 :** Extracts of HeLa cells treated with 10% serum for 15mins and phosphopeptide.

**Predicted band size:** 95 kDa

**Observed band size:** 100 kDa



Immunohistochemical analysis of paraffin-embedded human breast carcinoma using ab51227 (right picture is blocked with the phospho peptide)

## **Our Abpromise to you: Quality guaranteed and expert technical support**

---

- Replacement or refund for products not performing as stated on the datasheet
- Valid for 12 months from date of delivery
- Response to your inquiry within 24 hours
  
- We provide support in Chinese, English, French, German, Japanese and Spanish
- Extensive multi-media technical resources to help you
- We investigate all quality concerns to ensure our products perform to the highest standards

If the product does not perform as described on this datasheet, we will offer a refund or replacement. For full details of the Abpromise, please visit <https://www.abcam.cn/abpromise> or contact our technical team.

## **Terms and conditions**

---

- Guarantee only valid for products bought direct from Abcam or one of our authorized distributors