

Product datasheet

Anti-Dopamine D2 Receptor antibody ab85367

★★★★★ 3 Abreviews 2 References 2 图像

概述

产品名称	Anti-Dopamine D2 Receptor抗体
描述	兔多克隆抗体to Dopamine D2 Receptor
宿主	Rabbit
经测试应用	适用于: WB
种属反应性	与反应: Rat, Human 预测可用于: Mouse, Chimpanzee, Monkey
免疫原	Synthetic peptide conjugated to KLH derived from within residues 1 - 100 of Human Dopamine D2 Receptor.参阅Abcam的专有抗源政策(Peptide available as ab97357 .)
阳性对照	This antibody gave a positive signal in the following tissue lysates: Human brain; Human skeletal muscle; Rat Substantia nigra; Rat Dopaminergic nucleus.

性能

形式	Liquid
存放说明	Shipped at 4°C. Store at +4°C short term (1-2 weeks). Upon delivery aliquot. Store at -20°C or -80°C. Avoid freeze / thaw cycle.
存储溶液	Preservative: 0.02% Sodium Azide Constituents: 1% BSA, PBS, pH 7.4
纯度	Immunogen affinity purified
克隆	多克隆
同种型	IgG

应用

Our [Abpromise guarantee](#) covers the use of **ab85367** in the following tested applications.

The application notes include recommended starting dilutions; optimal dilutions/concentrations should be determined by the end user.

应用	Ab评论	说明
WB		Use a concentration of 1 µg/ml. Detects a band of approximately 49 kDa (predicted molecular weight: 50 kDa).

靶标

功能

This is one of the five types (D1 to D5) of receptors for dopamine. The activity of this receptor is mediated by G proteins which inhibit adenylyl cyclase.

疾病相关

Defects in DRD2 are associated with dystonia type 11 (DYT11) [MIM:159900]; also known as alcohol-responsive dystonia. DYT11 is a myoclonic dystonia. Dystonia is defined by the presence of sustained involuntary muscle contractions, often leading to abnormal postures. DYT11 is characterized by involuntary lightning jerks and dystonic movements and postures alleviated by alcohol. Inheritance is autosomal dominant. The age of onset, pattern of body involvement, presence of myoclonus and response to alcohol are all variable.

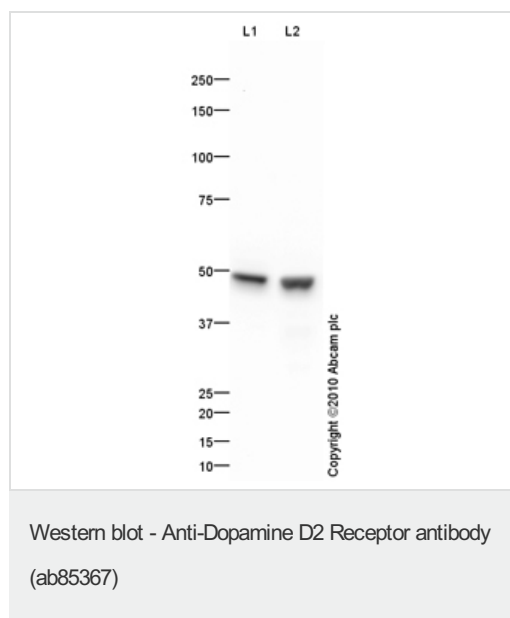
序列相似性

Belongs to the G-protein coupled receptor 1 family.

细胞定位

Cell membrane.

图片



All lanes : Anti-Dopamine D2 Receptor antibody (ab85367) at 1 µg/ml

Lane 1 : Human brain tissue lysate - total protein (ab29466)

Lane 2 : Human skeletal muscle tissue lysate - total protein (ab29330)

Lysates/proteins at 10 µg per lane.

Secondary

All lanes : Goat polyclonal to Rabbit IgG - H&L - Pre-Adsorbed (HRP) at 1/3000 dilution

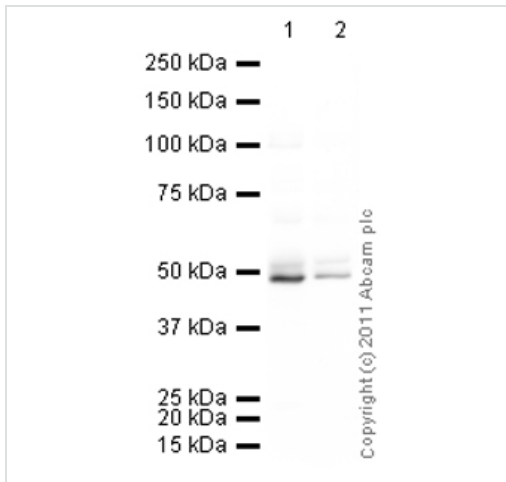
Developed using the ECL technique.

Performed under reducing conditions.

Predicted band size: 50 kDa

Observed band size: 49 kDa

Exposure time: 2 minutes



Western blot - Anti-Dopamine D2 Receptor antibody (ab85367)

All lanes : Anti-Dopamine D2 Receptor antibody (ab85367) at 1 µg/ml

Lane 1 : Rat Substantia Nigra Lysate

Lane 2 : Dopaminergic nucleus Rat Tissue Lysate

Lysates/proteins at 10 µg per lane.

Secondary

All lanes : Goat polyclonal to Rabbit IgG - H&L - Pre-Adsorbed (HRP) (ab65484) at 1/5000 dilution

Developed using the ECL technique.

Performed under reducing conditions.

Predicted band size: 50 kDa

Observed band size: 49 kDa

Additional bands at: 52 kDa (possible glycosylated form)

Exposure time: 4 minutes

Please note: All products are "FOR RESEARCH USE ONLY AND ARE NOT INTENDED FOR DIAGNOSTIC OR THERAPEUTIC USE"

Our Abpromise to you: Quality guaranteed and expert technical support

- Replacement or refund for products not performing as stated on the datasheet
- Valid for 12 months from date of delivery
- Response to your inquiry within 24 hours
- We provide support in Chinese, English, French, German, Japanese and Spanish
- Extensive multi-media technical resources to help you
- We investigate all quality concerns to ensure our products perform to the highest standards

If the product does not perform as described on this datasheet, we will offer a refund or replacement. For full details of the Abpromise, please visit <https://www.abcam.cn/abpromise> or contact our technical team.

Terms and conditions

- Guarantee only valid for products bought direct from Abcam or one of our authorized distributors