


Product datasheet

Anti-DDX56 antibody ab115158

3 图像

概述

产品名称	Anti-DDX56抗体
描述	兔多克隆抗体to DDX56
宿主	Rabbit
经测试应用	适用于: WB, IP, IHC-P
种属反应性	与反应: Human 预测可用于: Chimpanzee, Rhesus monkey, Gorilla, Orangutan 
免疫原	Synthetic peptide, corresponding to a region within amino acids 497-547 of Human DDX56 (Q9NY93).
阳性对照	HeLa and 293T cell lysates.

性能

形式	Liquid
存放说明	Shipped at 4°C. Upon delivery aliquot and store at -20°C. Avoid freeze / thaw cycles.
存储溶液	Preservative: 0.09% Sodium azide Constituent: 99% Tris citrate/phosphate pH 7 to 8.
纯度	Immunogen affinity purified
克隆	多克隆
同种型	IgG

应用

Our [Abpromise guarantee](#) covers the use of **ab115158** in the following tested applications.

The application notes include recommended starting dilutions; optimal dilutions/concentrations should be determined by the end user.

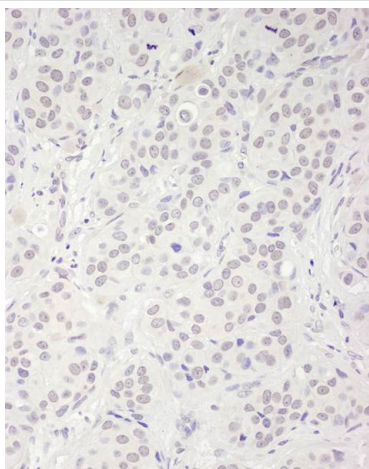
应用	Ab评论	说明
WB		1/2000 - 1/10000. Predicted molecular weight: 62 kDa.

应用	Ab评论	说明
IP		Use at 2-5 µg/mg of lysate.
IHC-P		1/500 - 1/2000. Perform heat mediated antigen retrieval with citrate buffer pH 6 before commencing with IHC staining protocol.

靶标

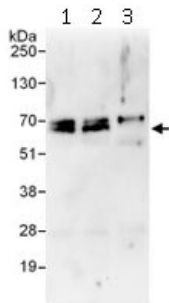
功能	May play a role in later stages of the processing of the pre-ribosomal particles leading to mature 60S ribosomal subunits. Has intrinsic ATPase activity.
组织特异性	Detected in heart, brain, liver, pancreas, placenta and lung.
序列相似性	Belongs to the DEAD box helicase family. DDX56/DBP9 subfamily. Contains 1 helicase ATP-binding domain. Contains 1 helicase C-terminal domain.
翻译后修饰	Phosphorylated upon DNA damage, probably by ATM or ATR.
细胞定位	Nucleus > nucleolus.

图片



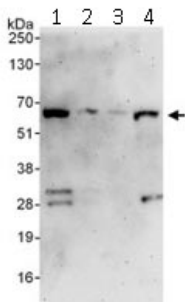
Immunohistochemistry (Formalin/PFA-fixed paraffin-embedded sections) analysis of human breast carcinoma tissue labelling DDX56 with ab115158 at 1/1000 (1 µg/ml). Detection: DAB.

Immunohistochemistry (Formalin/PFA-fixed paraffin-embedded sections) - Anti-DDX56 antibody (ab115158)



Immunoprecipitation - Anti-DDX56 antibody (ab115158)

Immunoprecipitation of DDX56 (3 μ g of antibody per mg of HeLa cell lysate; 20% of the IP loaded). Lane 1-Immunoprecipitation with an anti-DDX56 antibody that recognizes an upstream epitope; Lane 2- Immunoprecipitation with anti-DDX56 antibody (ab115158); Lane 3- Immunoprecipitation with IgG control. Anti-DDX56 antibody (ab115158) used at 1 μ g/ml for western blot. Detection: Chemiluminescence with exposure time of 30 sec.



Western blot - Anti-DDX56 antibody (ab115158)

All lanes : Anti-DDX56 antibody (ab115158) at 0.1 μ g/ml

Lane 1 : HeLa cell lysate at 50 μ g

Lane 2 : HeLa cell lysate at 15 μ g

Lane 3 : HeLa cell lysate at 5 μ g

Lane 4 : 293T cell lysate at 50 μ g

Predicted band size: 62 kDa

Exposure time: 3 minutes

Please note: All products are "FOR RESEARCH USE ONLY AND ARE NOT INTENDED FOR DIAGNOSTIC OR THERAPEUTIC USE"

Our Abpromise to you: Quality guaranteed and expert technical support

- Replacement or refund for products not performing as stated on the datasheet
- Valid for 12 months from date of delivery
- Response to your inquiry within 24 hours
- We provide support in Chinese, English, French, German, Japanese and Spanish
- Extensive multi-media technical resources to help you
- We investigate all quality concerns to ensure our products perform to the highest standards

If the product does not perform as described on this datasheet, we will offer a refund or replacement. For full details of the Abpromise, please visit <https://www.abcam.cn/abpromise> or contact our technical team.

Terms and conditions

- Guarantee only valid for products bought direct from Abcam or one of our authorized distributors