

## Product datasheet

# Anti-DDX18 antibody ab70526

### 2 图像

#### 概述

|       |  |
|-------|--|
| 产品名称  | Anti-DDX18抗体   |
| 描述    | 兔多克隆抗体to DDX18   |
| 宿主    | Rabbit   |
| 特异性   | We have data to indicate that this antibody may not cross react with Mouse. However, this has not been conclusively tested and expression levels may vary in certain cell lines/tissues. |
| 经测试应用 | 适用于: WB, IP  |
| 种属反应性 | 与反应: Human<br>预测可用于: Rabbit, Cow, Dog, Pig, Chimpanzee, Baboon, Rhesus monkey, Gorilla, Orangutan, Elephant  |
| 免疫原   | A region between residues 1 and 50 of human DDX18 (NP_006764.3)  |
| 阳性对照  | Whole cell lysate from HeLa and 293T cells.  |

#### 性能

|      |   |
|------|---|
| 形式   | Liquid  |
| 存放说明 | Shipped at 4°C. Upon delivery aliquot and store at -20°C. Avoid freeze / thaw cycles. |
| 存储溶液 | Preservative: 0.09% Sodium Azide<br>Constituents: 0.1% BSA, Tris buffered saline      |
| 纯度   | Immunogen affinity purified   |
| 克隆   | 多克隆   |
| 同种型  | IgG   |

#### 应用

Our [Abpromise guarantee](#) covers the use of **ab70526** in the following tested applications.

The application notes include recommended starting dilutions; optimal dilutions/concentrations should be determined by the end user.

| 应用 | Ab评论 | 说明 |
|----|------|----|
| WB |      |    |

| 应用 | Ab评论 | 说明 |
|----|------|----|
|----|------|----|

IP

#### 应用说明

IP: Use at 1 - 4 µg/mg of lysate.

WB: 1/2000 - 1/10000. Detects a band of approximately 75 kDa (predicted molecular weight: 75 kDa).

Not yet tested in other applications.

Optimal dilutions/concentrations should be determined by the end user.

#### 靶标

#### 功能

Probable RNA-dependent helicase.

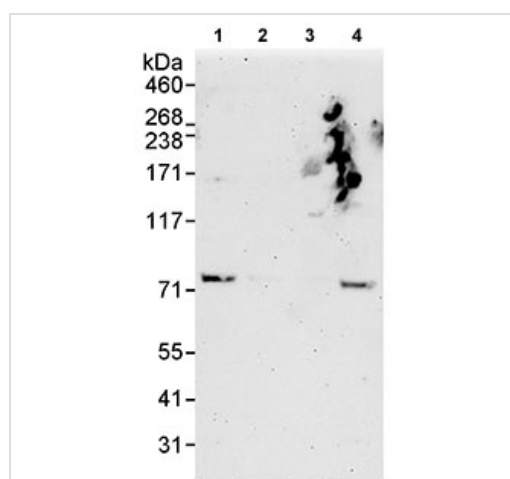
#### 序列相似性

Belongs to the DEAD box helicase family. DDX18/HAS1 subfamily.

Contains 1 helicase ATP-binding domain.

Contains 1 helicase C-terminal domain.

#### 图片



Western blot - Anti-DDX18 antibody (ab70526)

**All lanes** : Anti-DDX18 antibody (ab70526) at 0.04 µg/ml

**Lane 1** : Whole cell lysate from HeLa cells at 50 µg

**Lane 2** : Whole cell lysate from HeLa cells at 15 µg

**Lane 3** : Whole cell lysate from HeLa cells at 5 µg

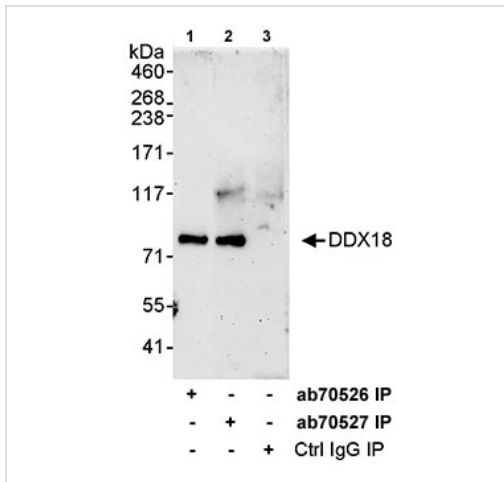
**Lane 4** : Whole cell lysate from 293T cells at 50 µg

Developed using the ECL technique.

**Predicted band size:** 75 kDa

**Observed band size:** 75 kDa

**Exposure time:** 3 minutes



Detection of DDX18 by Immunoprecipitation in Whole cell lysate from HeLa cells (1 mg for IP, 20% of IP loaded) using ab70526 (Lane 1) and ab70527 (Lane 2) at 3 µg/mg lysate for IP. ab70526 was used at 1 µg/ml for subsequent WB detection. Lane 3 represents control IgG IP.

Immunoprecipitation - Anti-DDX18 antibody (ab70526)

**Please note:** All products are "FOR RESEARCH USE ONLY AND ARE NOT INTENDED FOR DIAGNOSTIC OR THERAPEUTIC USE"

### Our Abpromise to you: Quality guaranteed and expert technical support

- Replacement or refund for products not performing as stated on the datasheet
- Valid for 12 months from date of delivery
- Response to your inquiry within 24 hours
- We provide support in Chinese, English, French, German, Japanese and Spanish
- Extensive multi-media technical resources to help you
- We investigate all quality concerns to ensure our products perform to the highest standards

If the product does not perform as described on this datasheet, we will offer a refund or replacement. For full details of the Abpromise, please visit <https://www.abcam.cn/abpromise> or contact our technical team.

### Terms and conditions

- Guarantee only valid for products bought direct from Abcam or one of our authorized distributors