

Product datasheet

Anti-Cytochrome p450 2J2 antibody ab69651

1 References 3 图像

概述

产品名称	Anti-Cytochrome p450 2J2抗体
描述	兔多克隆抗体to Cytochrome p450 2J2
宿主	Rabbit
经测试应用	适用于: ELISA, WB, IHC-P, ICC/IF
种属反应性	与反应: Human
免疫原	Synthetic peptide (Human) derived from an internal region of Cytochrome p450 2J2.
阳性对照	Extracts from A549, RAW264.7 and NIH-3T3 cells. Human heart tissue. HepG2 and COS7 cells.

性能

形式	Liquid
存放说明	Shipped at 4°C. Upon delivery aliquot and store at -20°C. Avoid freeze / thaw cycles.
存储溶液	Preservative: 0.02% Sodium Azide Constituents: 50% Glycerol, PBS (without Mg ²⁺ and Ca ²⁺), 150mM Sodium chloride, pH 7.4
纯度	Immunogen affinity purified
克隆	多克隆
同种型	IgG

应用

Our [Abpromise guarantee](#) covers the use of **ab69651** in the following tested applications.

The application notes include recommended starting dilutions; optimal dilutions/concentrations should be determined by the end user.

应用	Ab评论	说明
ELISA		
WB		
IHC-P		

应用	Ab评论	说明
----	------	----

ICC/IF

应用说明

ELISA: 1/10000.
 ICC/IF: 1/500 - 1/1000.
 IHC-P: 1/50 - 1/100.
 WB: 1/500 - 1/1000. Detects a band of approximately 58 kDa (predicted molecular weight: 58 kDa). Whole Cell Lysis Buffer (4?) is recommended. For example: Solution Final Concentration
 KCl 50mM
 NP-40 1%
 HEPES (pH7.8) 25mM
 DTT 125uM
 Na3VO4 1mM
 NaF 1mM
 + fresh protease and phosphatase inhibitors

Not yet tested in other applications.
 Optimal dilutions/concentrations should be determined by the end user.

靶标

功能

This enzyme metabolizes arachidonic acid predominantly via a NADPH-dependent olefin epoxidation to all four regioisomeric cis-epoxyeicosatrienoic acids. One of the predominant enzymes responsible for the epoxidation of endogenous cardiac arachidonic acid pools.

组织特异性

Highly expressed in heart, present at lower levels in liver, ileum, jejunum, colon, and kidney.

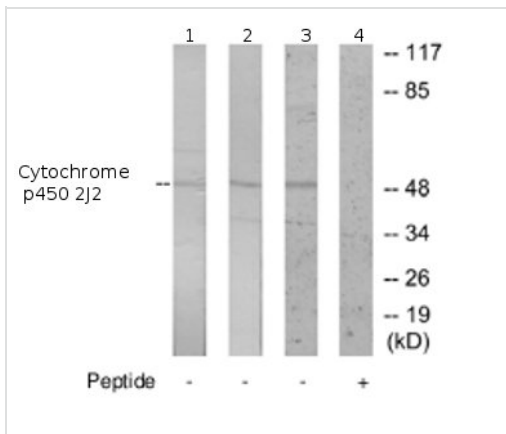
序列相似性

Belongs to the cytochrome P450 family.

细胞定位

Endoplasmic reticulum membrane. Microsome membrane.

图片



Western blot - Anti-Cytochrome p450 2J2 antibody (ab69651)

All lanes : Anti-Cytochrome p450 2J2 antibody (ab69651) at 1/500 dilution

Lane 1 : Extracts from A549 cells

Lane 2 : Extracts from RAW264.7 cells

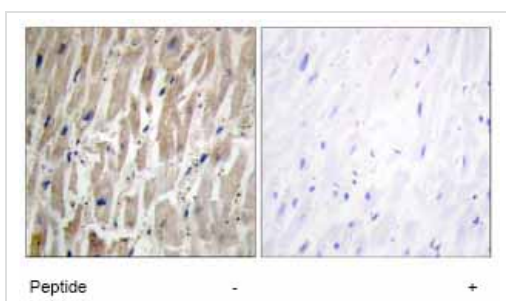
Lane 3 : Extracts from NIH-3T3 cells

Lane 4 : Extracts from NIH-3T3 cells with immunising peptide at 5 µg

Lysates/proteins at 5 µg per lane.

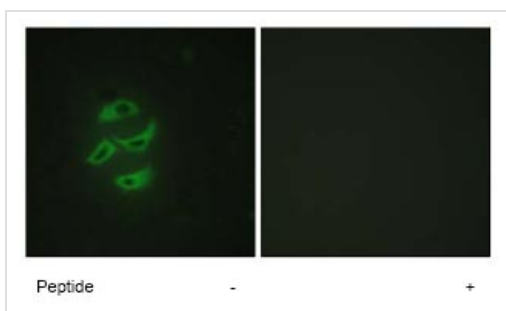
Predicted band size: 58 kDa

Observed band size: 58 kDa



Immunohistochemistry (Formalin/PFA-fixed paraffin-embedded sections) - Anti-Cytochrome p450 2J2 antibody (ab69651)

Immunohistochemistry analysis of paraffin-embedded human heart tissue stained with ab69651 at 1/50 dilution, with and without the immunising peptide.



Immunocytochemistry/ Immunofluorescence - Anti-Cytochrome p450 2J2 antibody (ab69651)

Immunofluorescence analysis of HepG2 cells using ab69651 at 1/500 dilution, with and without the immunising peptide.

Please note: All products are "FOR RESEARCH USE ONLY AND ARE NOT INTENDED FOR DIAGNOSTIC OR THERAPEUTIC USE"

Our Promise to you: Quality guaranteed and expert technical support

- Replacement or refund for products not performing as stated on the datasheet

- Valid for 12 months from date of delivery
- Response to your inquiry within 24 hours

- We provide support in Chinese, English, French, German, Japanese and Spanish
- Extensive multi-media technical resources to help you
- We investigate all quality concerns to ensure our products perform to the highest standards

If the product does not perform as described on this datasheet, we will offer a refund or replacement. For full details of the Abpromise, please visit <https://www.abcam.cn/abpromise> or contact our technical team.

Terms and conditions

- Guarantee only valid for products bought direct from Abcam or one of our authorized distributors