

## Product datasheet

# Anti-Cystatin C antibody [Cyst-13] ab24327

★★★★★ 3 Abreviews 2 References 2 图像

### 概述

<b>产品名称</b>	Anti-Cystatin C抗体[Cyst-13]
<b>描述</b>	小鼠单克隆抗体[Cyst-13] to Cystatin C
<b>宿主</b>	Mouse
<b>经测试应用</b>	<b>适用于:</b> Sandwich ELISA, ELISA, ICC/IF, WB
<b>种属反应性</b>	<b>与反应:</b> Human
<b>免疫原</b>	Full length Cystatin C protein (Human) conjugated to BSA.
<b>常规说明</b>	Abcam is committed to meeting high standards of ethical manufacturing and has decided to discontinue this product by June 2019 as it has been generated by the ascites method. We are sorry for any inconvenience this may cause.

### 性能

<b>形式</b>	Liquid
<b>存放说明</b>	Shipped at 4°C. Upon delivery aliquot and store at -20°C. Avoid freeze / thaw cycles.
<b>存储溶液</b>	Preservative: 0.1% Sodium Azide Constituents: PBS, pH 7.4
<b>纯度</b>	Protein A purified
<b>纯化说明</b>	PThis antibody was purified by chromatography. Purity was tested by electrophoresis.
<b>克隆</b>	单克隆
<b>克隆编号</b>	Cyst-13
<b>骨髓瘤</b>	Sp2/0
<b>同种型</b>	IgG1

### 应用

Our [Abpromise guarantee](#) covers the use of **ab24327** in the following tested applications.

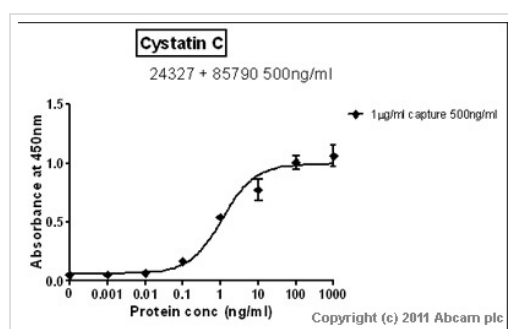
The application notes include recommended starting dilutions; optimal dilutions/concentrations should be determined by the end user.

应用	Ab评论	说明
Sandwich ELISA		Use a concentration of 1 µg/ml. For sandwich ELISA, use this antibody as Capture at 1µg/ml with <a href="#">ab85790</a> as Detection.
ELISA		Use at an assay dependent concentration.
ICC/IF		Use a concentration of 1 µg/ml.
WB	★★★★★	1/1000.

## 靶标

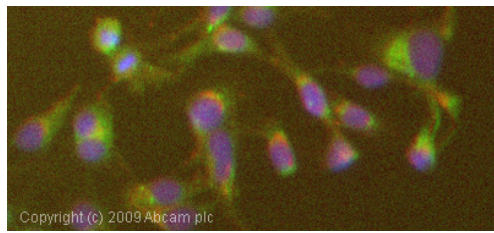
<b>功能</b>	As an inhibitor of cysteine proteinases, this protein is thought to serve an important physiological role as a local regulator of this enzyme activity.
<b>组织特异性</b>	Expressed in submandibular and sublingual saliva but not in parotid saliva (at protein level). Expressed in various body fluids, such as the cerebrospinal fluid and plasma. Expressed in highest levels in the epididymis, vas deferens, brain, thymus, and ovary and the lowest in the submandibular gland.
<b>疾病相关</b>	Amyloidosis 6 Macular degeneration, age-related, 11
<b>序列相似性</b>	Belongs to the cystatin family.
<b>翻译后修饰</b>	The Thr-25 variant is O-glycosylated with a core 1 or possibly core 8 glycan. The signal peptide of the O-glycosylated Thr-25 variant is cleaved between Ala-20 and Val-21.
<b>细胞定位</b>	Secreted.

## 图片



Standard Curve for Cystatin C (Analyte: [ab7653](#)) dilution range 1pg/ml to 1ug/ml using Capture Antibody [Mouse monoclonal \[Cyst-13\] to Cystatin C \(ab24327\)](#) at 1ug/ml and Detector Antibody [Rabbit polyclonal to Cystatin C \(ab85790\)](#) at 0.5ug/ml

Sandwich ELISA - Anti-Cystatin C antibody [Cyst-13] ([ab24327](#))



Immunocytochemistry/ Immunofluorescence - Anti-Cystatin C antibody [Cyst-13] (ab24327)

ICC/IF image of ab24327 stained HepG2 cells. The cells were 4% formaldehyde fixed (10 min) and then incubated in 1%BSA / 10% normal goat serum / 0.3M glycine in 0.1% PBS-Tween for 1h to permeabilise the cells and block non-specific protein-protein interactions. The cells were then incubated with the antibody (ab24327, 1µg/ml) overnight at +4°C. The secondary antibody (green) was Alexa Fluor® 488 goat anti-mouse IgG (H+L) used at a 1/1000 dilution for 1h. Alexa Fluor® 594 WGA was used to label plasma membranes (red) at a 1/200 dilution for 1h. DAPI was used to stain the cell nuclei (blue) at a concentration of 1.43µM.

**Please note:** All products are "FOR RESEARCH USE ONLY AND ARE NOT INTENDED FOR DIAGNOSTIC OR THERAPEUTIC USE"

### Our Abpromise to you: Quality guaranteed and expert technical support

---

- Replacement or refund for products not performing as stated on the datasheet
- Valid for 12 months from date of delivery
- Response to your inquiry within 24 hours
- We provide support in Chinese, English, French, German, Japanese and Spanish
- Extensive multi-media technical resources to help you
- We investigate all quality concerns to ensure our products perform to the highest standards

If the product does not perform as described on this datasheet, we will offer a refund or replacement. For full details of the Abpromise, please visit <https://www.abcam.cn/abpromise> or contact our technical team.

### Terms and conditions

---

- Guarantee only valid for products bought direct from Abcam or one of our authorized distributors