


Product datasheet

Anti-Cyclophilin A antibody ab77188

1 图像

概述

<b>产品名称</b>	Anti-Cyclophilin A抗体
<b>描述</b>	山羊多克隆抗体to Cyclophilin A
<b>宿主</b>	Goat
<b>特异性</b>	This antibody is expected to recognise both isoform 1 (NP_066953.1) and isoform 2 (NP_982254.1 and NP_982255.1). This product is expected to recognise PPIAL (NP_001008741.1, GeneID: 388817) which is identical to isoform 1 (NP_066953.1).
<b>经测试应用</b>	<b>适用于:</b> WB
<b>种属反应性</b>	<b>与反应:</b> Human <b>预测可用于:</b> Mouse, Rat, Cow, Cat, Dog, Pig, Chimpanzee, Baboon, Cynomolgus monkey, Rhesus monkey, Gorilla, Chinese hamster, Common marmoset, Orangutan 
<b>免疫原</b>	Synthetic peptide: ERFGSRNGKTSKK from an internal region of the human Cyclophilin A protein sequence according to NP_066953.1; NP_982254.1; NP_982255.1.  <a href="#">Run BLAST with</a> <a href="#">Run BLAST with</a>
<b>阳性对照</b>	Human lymph node, tonsil and thymus lysates. Lysates prepared from transfected HEK293 cells transiently expressing Cyclophilin A.

性能

<b>形式</b>	Liquid
<b>存放说明</b>	Shipped at 4°C. Upon delivery aliquot and store at -20°C. Avoid freeze / thaw cycles.
<b>存储溶液</b>	Preservative: 0.02% Sodium Azide Constituents: 0.5% BSA, Tris buffered saline, pH 7.3
<b>纯度</b>	Immunogen affinity purified
<b>纯化说明</b>	Purified from goat serum by ammonium sulphate precipitation followed by antigen affinity chromatography using the immunizing peptide.
<b>克隆</b>	多克隆
<b>同种型</b>	IgG

## 应用

Our [Abpromise guarantee](#) covers the use of **ab77188** in the following tested applications.

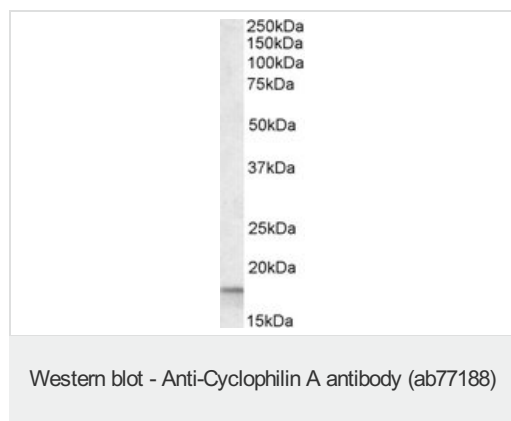
The application notes include recommended starting dilutions; optimal dilutions/concentrations should be determined by the end user.

应用	Ab评论	说明
WB		Use a concentration of 0.1 - 0.3 µg/ml. Detects a band of approximately 18 kDa (predicted molecular weight: 18 kDa).

## 靶标

功能	PPases accelerate the folding of proteins. It catalyzes the cis-trans isomerization of proline imidic peptide bonds in oligopeptides.
序列相似性	Belongs to the cyclophilin-type PPase family, PPase A subfamily. Contains 1 PPase cyclophilin-type domain.
细胞定位	Cytoplasm.

## 图片



Anti-Cyclophilin A antibody (ab77188) at 0.1 µg/ml + Human Lymph node lysate (RIPA buffer) at 35 µg

**Predicted band size:** 18 kDa

**Observed band size:** 18 kDa

Primary incubation was 1 hour. Detected by chemiluminescence.

**Please note:** All products are "FOR RESEARCH USE ONLY AND ARE NOT INTENDED FOR DIAGNOSTIC OR THERAPEUTIC USE"

## Our Abpromise to you: Quality guaranteed and expert technical support

- Replacement or refund for products not performing as stated on the datasheet
- Valid for 12 months from date of delivery
- Response to your inquiry within 24 hours
- We provide support in Chinese, English, French, German, Japanese and Spanish
- Extensive multi-media technical resources to help you
- We investigate all quality concerns to ensure our products perform to the highest standards

If the product does not perform as described on this datasheet, we will offer a refund or replacement. For full details of the Abpromise, please visit <https://www.abcam.cn/abpromise> or contact our technical team.

## Terms and conditions

---

- Guarantee only valid for products bought direct from Abcam or one of our authorized distributors