


Product datasheet

Anti-Cyclin H (phospho T315) antibody ab73208

1 图像

概述

产品名称	Anti-Cyclin H (phospho T315)抗体
描述	兔多克隆抗体 to Cyclin H (phospho T315)
宿主	Rabbit
特异性	ab73208 detects endogenous levels of Cyclin H only when phosphorylated at threonine 315.
经测试应用	适用于: WB, ELISA
种属反应性	与反应: Human 预测可用于: Mouse 
免疫原	Synthetic phosphopeptide derived from human Cyclin H around the phosphorylation site of threonine 315 (EWT ^P DD)
阳性对照	HeLa cell extract.

性能

形式	Liquid
存放说明	Shipped at 4°C. Store at -20°C. Stable for 12 months at -20°C.
存储溶液	Preservative: 0.02% Sodium Azide Constituents: 50% Glycerol, PBS (without Mg ²⁺ and Ca ²⁺), 150mM Sodium chloride, pH 7.4
纯度	Immunogen affinity purified
纯化说明	ab73208 was affinity-purified from rabbit antiserum by affinity-chromatography using epitope-specific phosphopeptide. The antibody against non-phosphopeptide was removed by chromatography using non-phosphopeptide corresponding to the phosphorylation site.
克隆	多克隆
同种型	IgG

应用

Our [Abpromise guarantee](#) covers the use of **ab73208** in the following tested applications.

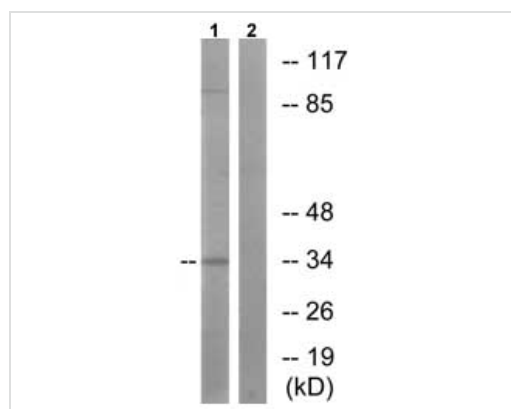
The application notes include recommended starting dilutions; optimal dilutions/concentrations should be determined by the end user.

应用	Ab评论	说明
WB		1/500 - 1/1000. Detects a band of approximately 34 kDa (predicted molecular weight: 38 kDa).
ELISA		1/10000.

靶标

功能	Regulates CDK7, the catalytic subunit of the CDK-activating kinase (CAK) enzymatic complex. CAK activates the cyclin-associated kinases CDK1, CDK2, CDK4 and CDK6 by threonine phosphorylation. CAK complexed to the core-TFIIH basal transcription factor activates RNA polymerase II by serine phosphorylation of the repetitive C-terminus domain (CTD) of its large subunit (POLR2A), allowing its escape from the promoter and elongation of the transcripts. Involved in cell cycle control and in RNA transcription by RNA polymerase II. Its expression and activity are constant throughout the cell cycle.
序列相似性	Belongs to the cyclin family. Cyclin C subfamily.
细胞定位	Nucleus.

图片



Western blot - Anti-Cyclin H (phospho T315) antibody (ab73208)

All lanes : Anti-Cyclin H (phospho T315) antibody (ab73208) at 1/500 dilution

Lane 1 : HeLa cell extract

Lane 2 : HeLa cell extract with immunising phosphopeptide at 10 µg

Lysates/proteins at 30 µg per lane.

Predicted band size: 38 kDa

Observed band size: 34 kDa

Additional bands at: 90 kDa. We are unsure as to the identity of these extra bands.

Please note: All products are "FOR RESEARCH USE ONLY AND ARE NOT INTENDED FOR DIAGNOSTIC OR THERAPEUTIC USE"

Our Abpromise to you: Quality guaranteed and expert technical support

- Replacement or refund for products not performing as stated on the datasheet
- Valid for 12 months from date of delivery
- Response to your inquiry within 24 hours
- We provide support in Chinese, English, French, German, Japanese and Spanish

- Extensive multi-media technical resources to help you
- We investigate all quality concerns to ensure our products perform to the highest standards

If the product does not perform as described on this datasheet, we will offer a refund or replacement. For full details of the Abpromise, please visit <https://www.abcam.cn/abpromise> or contact our technical team.

Terms and conditions

- Guarantee only valid for products bought direct from Abcam or one of our authorized distributors