


Product datasheet

Anti-Crk p38 antibody [mAbcam69723] ab69723

1 图像

概述

产品名称	Anti-Crk p38抗体[mAbcam69723]
描述	小鼠单克隆抗体[mAbcam69723] to Crk p38
宿主	Mouse
经测试应用	适用于: WB
种属反应性	与反应: Mouse 预测可用于: Rat, Chicken, Human 
免疫原	Synthetic peptide conjugated to KLH derived from within residues 250 to the C-terminus of Mouse Crk p38.参阅Abcam的 专有抗源政策 (Peptide available as ab95851 .)
阳性对照	This antibody gave a positive signal in the following whole cell lysates: K562; HepG2; HeLa; HEK293; MCF7.
常规说明	This antibody clone is manufactured by Abcam. If you require this antibody in a particular buffer formulation or a particular conjugate for your experiments, please contact orders@abcam.com or you can find further information here .

性能

形式	Liquid
存放说明	Shipped at 4°C. Store at +4°C short term (1-2 weeks). Upon delivery aliquot. Store at -20°C or -80°C. Avoid freeze / thaw cycle.
存储溶液	Preservative: 0.02% Sodium Azide Constituents: 1% BSA, PBS, pH 7.4
纯度	IgG fraction
克隆	单克隆
克隆编号	mAbcam69723
骨髓瘤	Sp2/0-Ag14
同种型	IgG

应用

Our [Abpromise guarantee](#) covers the use of **ab69723** in the following tested applications.

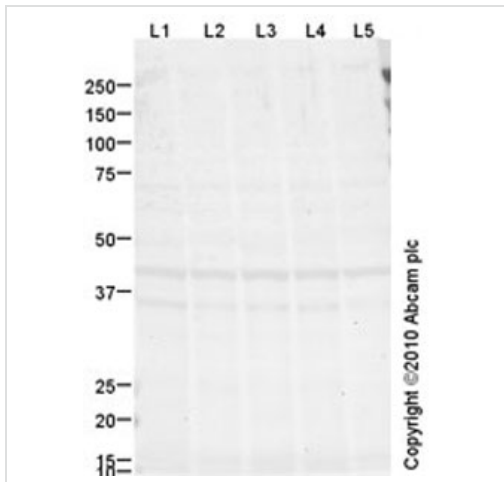
The application notes include recommended starting dilutions; optimal dilutions/concentrations should be determined by the end user.

应用	Ab评论	说明
WB		Use a concentration of 1 mg/ml. Detects a band of approximately 36 kDa (predicted molecular weight: 34 kDa).

靶标

功能	The Crk-I and Crk-II forms differ in their biological activities. Crk-II has less transforming activity than Crk-I. Crk-II mediates attachment-induced MAPK8 activation, membrane ruffling and cell motility in a Rac-dependent manner. Involved in phagocytosis of apoptotic cells and cell motility via its interaction with DOCK1 and DOCK4.
序列相似性	Belongs to the CRK family. Contains 1 SH2 domain. Contains 2 SH3 domains.
结构域	The C-terminal SH3 domain function as a negative modulator for transformation and the N-terminal SH3 domain appears to function as a positive regulator for transformation. The SH2 domain mediates interaction with SHB.
翻译后修饰	Phosphorylation of Crk-II (40 kDa) gives rise to a 42 kDa form. Phosphorylated on Tyr-221 upon cell adhesion. Results in the negative regulation of the association with SH2- and SH3-binding partners, possibly by the formation of an intramolecular interaction of phosphorylated Tyr-221 with the SH2 domain. This leads finally to the down-regulation of the Crk signaling pathway.
细胞定位	Cytoplasm. Cell membrane. Translocated to the plasma membrane upon cell adhesion.

图片



Western blot - Anti-Crk p38 antibody
[mAbcam69723] (ab69723)

All lanes : Anti-Crk p38 antibody
[mAbcam69723] (ab69723) at 1 µg/ml

Lane 1 : K562 (Human erythromyeloblastoid leukemia cell line) Whole Cell Lysate

Lane 2 : HepG2 (Human hepatocellular liver carcinoma cell line) Whole Cell Lysate

Lane 3 : HeLa (Human epithelial carcinoma cell line) Whole Cell Lysate

Lane 4 : HEK293 (Human embryonic kidney cell line) Whole Cell Lysate

Lane 5 : MCF7 (Human breast adenocarcinoma cell line) Whole Cell Lysate

Lysates/proteins at 20 µg per lane.

Secondary

All lanes : Goat polyclonal to Mouse IgG - H&L - Pre-Adsorbed (HRP) at 1/3000 dilution

Developed using the ECL technique.

Performed under reducing conditions.

Predicted band size: 34 kDa

Observed band size: 36,45 kDa

Exposure time: 20 minutes

Crk p38 contains a number of potential phosphorylation sites (SwissProt) which may explain the migration pattern observed.

Please note: All products are "FOR RESEARCH USE ONLY AND ARE NOT INTENDED FOR DIAGNOSTIC OR THERAPEUTIC USE"

Our Abpromise to you: Quality guaranteed and expert technical support

- Replacement or refund for products not performing as stated on the datasheet
- Valid for 12 months from date of delivery
- Response to your inquiry within 24 hours
- We provide support in Chinese, English, French, German, Japanese and Spanish

- Extensive multi-media technical resources to help you
- We investigate all quality concerns to ensure our products perform to the highest standards

If the product does not perform as described on this datasheet, we will offer a refund or replacement. For full details of the Abpromise, please visit <https://www.abcam.cn/abpromise> or contact our technical team.

Terms and conditions

- Guarantee only valid for products bought direct from Abcam or one of our authorized distributors