

Product datasheet

Anti-Cofilin antibody [AF2C2] ab75510

1 图像

概述

产品名称	Anti-Cofilin抗体[AF2C2]
描述	小鼠单克隆抗体[AF2C2] to Cofilin
宿主	Mouse
经测试应用	适用于: ChIP, WB, ELISA
种属反应性	与反应: Mouse, Rat, Human
免疫原	Recombinant full length Cofilin protein (Human) purified from <i>E.coli</i> (His-Cofilin)
阳性对照	Jurkat, Raji, SK-N-MC, PC12 and NIH3T3 cell lysates
常规说明	<p>This product was changed from ascites to tissue culture supernatant on 18th September 2017. Lot numbers higher than GR166582 will be from tissue culture supernatant. Please note that the dilutions may need to be adjusted accordingly.</p> <p>Abcam is committed to meeting high standards of ethical manufacturing and as such, we will be discontinuing this product, which has been generated by the ascites method, within the next year. We are sorry for any inconvenience this may cause. If you would like help finding an alternative product, please do not hesitate to contact our scientific support team.</p>

性能

形式	Liquid
存放说明	Shipped at 4°C. Upon delivery aliquot and store at -20°C. Avoid freeze / thaw cycles.
存储溶液	Preservative: 0.03% Sodium Azide Constituents: 50% Glycerol, 0.01% BSA, HEPES, 0.15M Sodium chloride
纯度	Tissue culture supernatant
克隆	单克隆
克隆编号	AF2C2
同种型	IgG2a
轻链类型	kappa

应用

Our [Abpromise guarantee](#) covers the use of **ab75510** in the following tested applications.

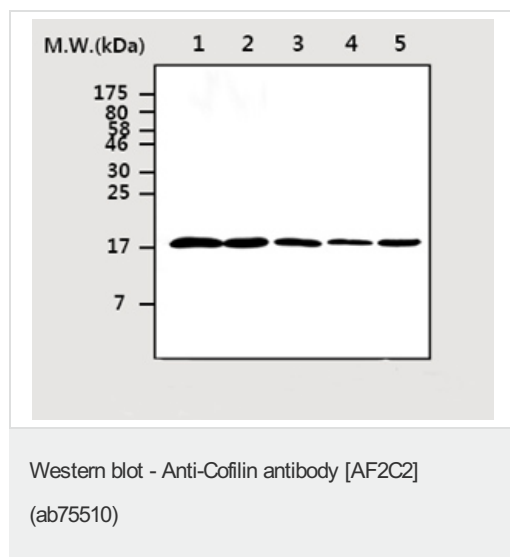
The application notes include recommended starting dilutions; optimal dilutions/concentrations should be determined by the end user.

应用	Ab评论	说明
ChIP		Use at an assay dependent concentration.
WB		Use a concentration of 4 µg/ml. Detects a band of approximately 18 kDa (predicted molecular weight: 18 kDa).
ELISA		Use at an assay dependent concentration.

## 靶标

<b>功能</b>	Controls reversibly actin polymerization and depolymerization in a pH-sensitive manner. It has the ability to bind G- and F-actin in a 1:1 ratio of cofilin to actin. It is the major component of intranuclear and cytoplasmic actin rods.
<b>组织特异性</b>	Widely distributed in various tissues.
<b>序列相似性</b>	Belongs to the actin-binding proteins ADF family. Contains 1 ADF-H domain.
<b>翻译后修饰</b>	Phosphorylated on Ser-3 in resting cells.
<b>细胞定位</b>	Nucleus matrix. Cytoplasm > cytoskeleton. Almost completely in nucleus in cells exposed to heat shock or 10% dimethyl sulfoxide.

## 图片



**All lanes :** Anti-Cofilin antibody [AF2C2] (ab75510) at 1/2000 dilution

**Lane 1 :** Jurkat cell lysate

**Lane 2 :** Raji cell lysate

**Lane 3 :** SK-N-MC cell lysate

**Lane 4 :** PC12 cell lysate

**Lane 5 :** NIH3T3 cell lysate

**Predicted band size:** 18 kDa

**Observed band size:** 18 kDa

**Please note:** All products are "FOR RESEARCH USE ONLY AND ARE NOT INTENDED FOR DIAGNOSTIC OR THERAPEUTIC USE"

## Our Promise to you: Quality guaranteed and expert technical support

- Replacement or refund for products not performing as stated on the datasheet
- Valid for 12 months from date of delivery
- Response to your inquiry within 24 hours

- We provide support in Chinese, English, French, German, Japanese and Spanish
- Extensive multi-media technical resources to help you
- We investigate all quality concerns to ensure our products perform to the highest standards

If the product does not perform as described on this datasheet, we will offer a refund or replacement. For full details of the Abpromise, please visit <https://www.abcam.cn/abpromise> or contact our technical team.

### **Terms and conditions**

---

- Guarantee only valid for products bought direct from Abcam or one of our authorized distributors