

Product datasheet

Anti-Claudin 6 antibody ab99226

★★★★★ 1 Abreviews 1 图像

概述

产品名称	Anti-Claudin 6抗体
描述	兔多克隆抗体to Claudin 6
宿主	Rabbit
经测试应用	适用于: WB
种属反应性	与反应: Human
免疫原	Synthetic peptide conjugated to KLH derived from within residues 200 to the C-terminus of Human Claudin 6.参阅Abcam的专有抗源政策
阳性对照	This antibody gave a positive signal in the following lysates: A498 (Human Kidney Carcinoma) Whole Cell Lysate

性能

形式	Liquid
存放说明	Shipped at 4°C. Store at +4°C short term (1-2 weeks). Upon delivery aliquot. Store at -20°C or -80°C. Avoid freeze / thaw cycle.
存储溶液	pH: 7.40 Preservative: 0.02% Sodium azide Constituent: PBS Note: Batches of this product that have a concentration < 1mg/ml may have BSA added as a stabilising agent. If you would like information about the formulation of a specific lot, please contact our scientific support team who will be happy to help.
纯度	Immunogen affinity purified
克隆	多克隆
同种型	IgG

应用

Our [Abpromise guarantee](#) covers the use of **ab99226** in the following tested applications.

The application notes include recommended starting dilutions; optimal dilutions/concentrations should be determined by the end user.

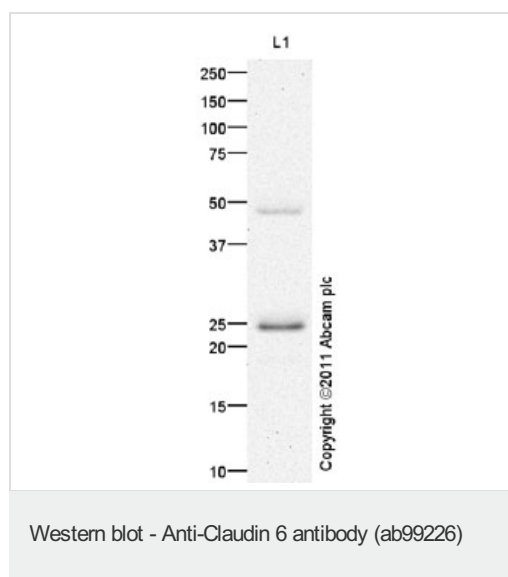
应用	Ab评论	说明
----	------	----

WB ★★★★★ Use a concentration of 1 µg/ml. Detects a band of approximately 24 kDa (predicted molecular weight: 23 kDa).

靶标

功能	Plays a major role in tight junction-specific obliteration of the intercellular space.
序列相似性	Belongs to the claudin family.
细胞定位	Cell junction > tight junction. Cell membrane.

图片



Anti-Claudin 6 antibody (ab99226) at 1 µg/ml
+ A498 (Human Kidney Carcinoma) Whole
Cell Lysate at 10 µg

Secondary

Goat polyclonal Secondary Antibody to Rabbit
IgG - H&L (HRP), pre-adsorbed at 1/5000
dilution

Developed using the ECL technique.

Performed under reducing conditions.

Predicted band size: 23 kDa

Observed band size: 24 kDa

Additional bands at: 47 kDa. We are unsure
as to the identity of these extra bands.

Exposure time: 20 minutes

Please note: All products are "FOR RESEARCH USE ONLY AND ARE NOT INTENDED FOR DIAGNOSTIC OR THERAPEUTIC USE"

Our Abpromise to you: Quality guaranteed and expert technical support

- Replacement or refund for products not performing as stated on the datasheet
- Valid for 12 months from date of delivery
- Response to your inquiry within 24 hours
- We provide support in Chinese, English, French, German, Japanese and Spanish
- Extensive multi-media technical resources to help you

- We investigate all quality concerns to ensure our products perform to the highest standards

If the product does not perform as described on this datasheet, we will offer a refund or replacement. For full details of the Abpromise, please visit <https://www.abcam.cn/abpromise> or contact our technical team.

Terms and conditions

- Guarantee only valid for products bought direct from Abcam or one of our authorized distributors