


Product datasheet

Anti-Cellubrevin antibody [2A2] ab81610

1 Abreviews 1 图像

概述

| | |
|--------------|---|
| 产品名称 | Anti-Cellubrevin抗体[2A2] |
| 描述 | 小鼠单克隆抗体[2A2] to Cellubrevin |
| 宿主 | Mouse |
| 经测试应用 | 适用于: WB, ELISA |
| 种属反应性 | 与反应: Mouse, Human 预测可用于: Rat, Cow, Xenopus laevis, Zebrafish, Cynomolgus monkey  |
| 免疫原 | Recombinant fragment: MSTGPTAATG SNRRLQQTQN QVDEVVDIMR VNVDKVLERD QKLSELDDRA DALQAGA, corresponding to amino acids 1-77 of Human Cellubrevin purified from E. coli (NP_004772) Run BLAST with ExPASy Run BLAST with NCBI |
| 阳性对照 | Mouse lung extracts. |
| 常规说明 | Isotype: Mouse IgG2b heavy chain and kappa light chain |

性能

| | |
|-------------|--|
| 形式 | Liquid |
| 存放说明 | Shipped at 4°C. Store at +4°C short term (1-2 weeks). Upon delivery aliquot. Store at -20°C or -80°C. Avoid freeze / thaw cycle. |
| 存储溶液 | Preservative: 0.1% Sodium Azide Constituents: PBS, pH 7.4 |
| 克隆 | 单克隆 |
| 克隆编号 | 2A2 |
| 同种型 | IgG2b |
| 轻链类型 | kappa |

应用

Our [Abpromise guarantee](#) covers the use of **ab81610** in the following tested applications.

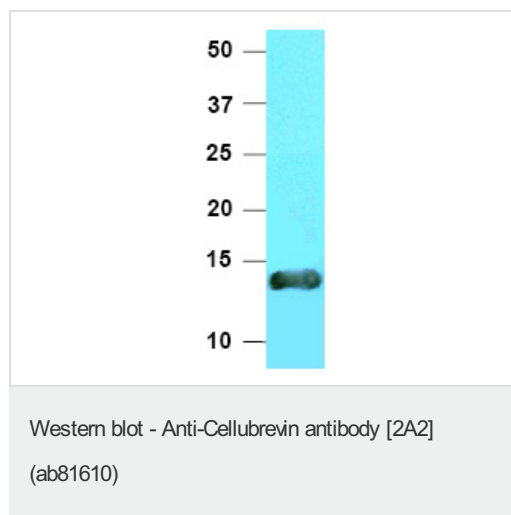
The application notes include recommended starting dilutions; optimal dilutions/concentrations should be determined by the end user.

| 应用 | Ab评论 | 说明 |
|-------|------|---|
| WB | | 1/1000 - 1/2000. Detects a band of approximately 11 kDa (predicted molecular weight: 11 kDa). |
| ELISA | | Use at an assay dependent dilution. |

靶标

| | |
|-------|---|
| 功能 | SNARE involved in vesicular transport from the late endosomes to the trans-Golgi network. |
| 序列相似性 | Belongs to the synaptobrevin family. Contains 1 v-SNARE coiled-coil homology domain. |
| 翻译后修饰 | Phosphorylated upon DNA damage, probably by ATM or ATR. |
| 细胞定位 | Membrane. Cell junction > synapse > synaptosome. |

图片



Anti-Cellubrevin antibody [2A2] (ab81610) at 1/1000 dilution + mouse lung extract at 40 µg

Secondary

goat anti-mouse HRP

Developed using the ECL technique.

Predicted band size: 11 kDa

Observed band size: 11 kDa

Please note: All products are "FOR RESEARCH USE ONLY AND ARE NOT INTENDED FOR DIAGNOSTIC OR THERAPEUTIC USE"

Our Abpromise to you: Quality guaranteed and expert technical support

- Replacement or refund for products not performing as stated on the datasheet
- Valid for 12 months from date of delivery
- Response to your inquiry within 24 hours
- We provide support in Chinese, English, French, German, Japanese and Spanish
- Extensive multi-media technical resources to help you
- We investigate all quality concerns to ensure our products perform to the highest standards

If the product does not perform as described on this datasheet, we will offer a refund or replacement. For full details of the Abpromise, please visit <https://www.abcam.cn/abpromise> or contact our technical team.

Terms and conditions

- Guarantee only valid for products bought direct from Abcam or one of our authorized distributors