

Product datasheet

Anti-Cathepsin D antibody ab19555

★ ★ ★ ★ ★ 1 Abreviews 1 References 2 图像

概述

产品名称	Anti-Cathepsin D抗体
描述	兔多克隆抗体to Cathepsin D
宿主	Rabbit
特异性	This antibody reacts with human liver cathepsin D, and does not react with cathepsins B, H and L.
经测试应用	适用于: ELISA, WB, ICC/IF, IHC-P
种属反应性	与反应: Human
免疫原	Mature form Cathepsin D.
阳性对照	Tested with human liver cells. IF/ICC: HeLa cell line. This antibody gave a positive result in IHC in the following FFPE tissue: Human Lung.

性能

形式	Liquid
存放说明	Shipped at 4°C. Upon delivery aliquot and store at -20°C. Avoid freeze / thaw cycles.
存储溶液	Preservative: 0.1% Sodium Azide Constituents: PBS
纯度	Protein A purified
纯化说明	Ammonium sulfate precipitation.
克隆	多克隆
同种型	IgG

应用

Our [Abpromise guarantee](#) covers the use of **ab19555** in the following tested applications.

The application notes include recommended starting dilutions; optimal dilutions/concentrations should be determined by the end user.

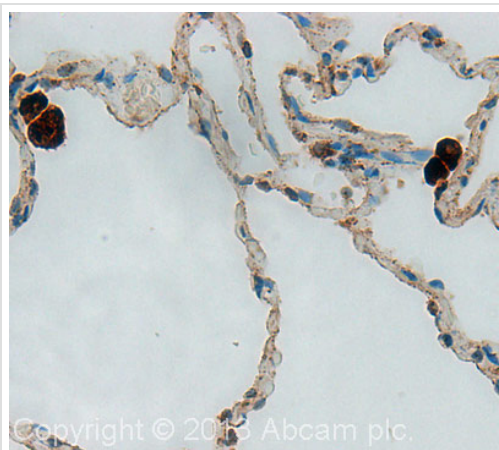
应用	Ab评论	说明
ELISA		1/1000.

应用	Ab评论	说明
WB	★★★★★	1/4000. Predicted molecular weight: 46 kDa.
ICC/IF		1/1000.
IHC-P		1/2000. Perform heat mediated antigen retrieval with citrate buffer pH 6 before commencing with IHC staining protocol.

靶标

功能	Acid protease active in intracellular protein breakdown. Involved in the pathogenesis of several diseases such as breast cancer and possibly Alzheimer disease.
组织特异性	Expressed in the aorta extracellular space (at protein level).
疾病相关	Ceroid lipofuscinosis, neuronal, 10
序列相似性	Belongs to the peptidase A1 family. Contains 1 peptidase A1 domain.
翻译后修饰	N- and O-glycosylated.
细胞定位	Lysosome. Melanosome. Secreted, extracellular space. Identified by mass spectrometry in melanosome fractions from stage I to stage IV. In aortic samples, detected as an extracellular protein loosely bound to the matrix (PubMed:20551380).

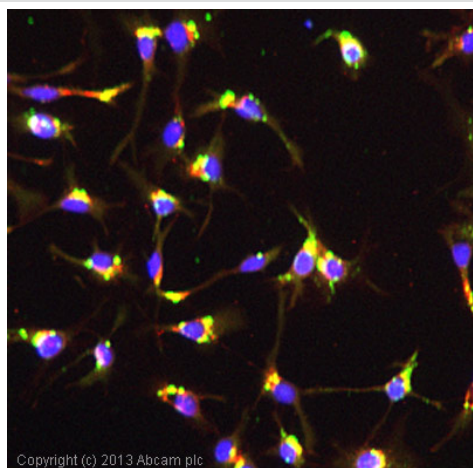
图片



Immunohistochemistry (Formalin/PFA-fixed paraffin-embedded sections) - Anti-Cathepsin D antibody (ab19555)

IHC image of Cathepsin D staining in Human Lung formalin fixed paraffin embedded tissue section, performed on a Leica Bond™ system using the standard protocol F. The section was pre-treated using heat mediated antigen retrieval with sodium citrate buffer (pH6, epitope retrieval solution 1) for 20 mins. The section was then incubated with ab19555, 1/2000 dilution, for 15 mins at room temperature and detected using an HRP conjugated compact polymer system. DAB was used as the chromogen. The section was then counterstained with haematoxylin and mounted with DPX.

For other IHC staining systems (automated and non-automated) customers should optimize variable parameters such as antigen retrieval conditions, primary antibody concentration and antibody incubation times.



Immunocytochemistry/ Immunofluorescence - Anti-Cathepsin D antibody (ab19555)

ICC/IF image of ab19555 stained HeLa cells. The cells were 100% methanol fixed (5 min) and then incubated in 1%BSA / 10% normal goat serum / 0.3M glycine in 0.1% PBS-Tween for 1h to permeabilise the cells and block non-specific protein-protein interactions. The cells were then incubated with the antibody (ab19555, 1/1000 dilution) overnight at +4°C. The secondary antibody (green) was [ab96899](#), DyLight® 488 goat anti-rabbit IgG (H+L) used at a 1/250 dilution for 1h. Alexa Fluor® 594 WGA was used to label plasma membranes (red) at a 1/200 dilution for 1h. DAPI was used to stain the cell nuclei (blue) at a concentration of 1.43µM

Please note: All products are "FOR RESEARCH USE ONLY AND ARE NOT INTENDED FOR DIAGNOSTIC OR THERAPEUTIC USE"

Our Abpromise to you: Quality guaranteed and expert technical support

- Replacement or refund for products not performing as stated on the datasheet
- Valid for 12 months from date of delivery
- Response to your inquiry within 24 hours

- We provide support in Chinese, English, French, German, Japanese and Spanish
- Extensive multi-media technical resources to help you
- We investigate all quality concerns to ensure our products perform to the highest standards

If the product does not perform as described on this datasheet, we will offer a refund or replacement. For full details of the Abpromise, please visit <https://www.abcam.cn/abpromise> or contact our technical team.

Terms and conditions

- Guarantee only valid for products bought direct from Abcam or one of our authorized distributors