

Product datasheet

Anti-Casein Kinase 1 alpha antibody [AT2E2] ab88079

1 References 1 图像

概述

产品名称	Anti-Casein Kinase 1 alpha抗体[AT2E2]
描述	小鼠单克隆抗体[AT2E2] to Casein Kinase 1 alpha
宿主	Mouse
经测试应用	适用于: WB, ELISA
种属反应性	与反应: Human
免疫原	Recombinant full length human protein Casein Kinase 1 alpha purified from E. coli (NP_001883)
阳性对照	HeLa and MCF7 cell lysates
常规说明	Abcam is committed to meeting high standards of ethical manufacturing and has decided to discontinue this product by June 2019 as it has been generated by the ascites method. We are sorry for any inconvenience this may cause.

性能

形式	Liquid
存放说明	Shipped at 4°C. Upon delivery aliquot. Store at -20°C or -80°C. Avoid freeze / thaw cycle.
存储溶液	Preservative: 0.1% Sodium Azide Constituents: PBS, pH 7.4
纯度	Protein G purified
克隆	单克隆
克隆编号	AT2E2
同种型	IgG2a
轻链类型	kappa

应用

Our [Abpromise guarantee](#) covers the use of **ab88079** in the following tested applications.

The application notes include recommended starting dilutions; optimal dilutions/concentrations should be determined by the end user.

应用	Ab评论	说明
WB		1/1000 - 1/2000. Predicted molecular weight: 39 kDa.
ELISA		Use at an assay dependent dilution.

靶标

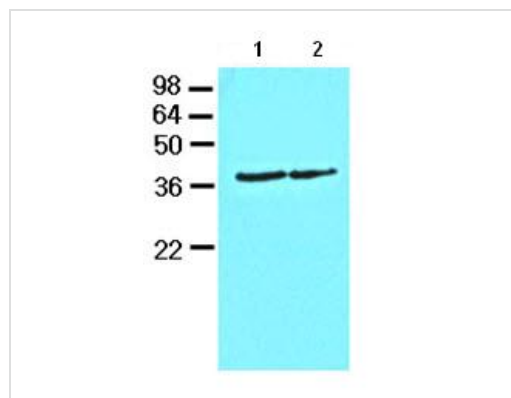
功能 Casein kinases are operationally defined by their preferential utilization of acidic proteins such as caseins as substrates. It can phosphorylate a large number of proteins. Participates in Wnt signaling. Phosphorylates CTNNB1 at 'Ser-45'. May play a role in segregating chromosomes during mitosis.

序列相似性 Belongs to the protein kinase superfamily. CK1 Ser/Thr protein kinase family. Casein kinase I subfamily.

Contains 1 protein kinase domain.

细胞定位 Cytoplasm. Cytoplasm > cytoskeleton > centrosome. Chromosome > centromere > kinetochore. Nucleus speckle. Localizes to the centrosome in interphase cells, and to kinetochore fibers during mitosis.

图片



Western blot - Anti-Casein Kinase 1 alpha antibody [AT2E2] (ab88079)

All lanes : Anti-Casein Kinase 1 alpha antibody [AT2E2] (ab88079) at 1/1000 dilution

Lane 1 : HeLa cell lysate

Lane 2 : MCF7 cell lysate

Lysates/proteins at 40 µg per lane.

Secondary

All lanes : HRP conjugated goat anti-mouse IgG

Developed using the ECL technique.

Predicted band size: 39 kDa

Observed band size: 39 kDa

Please note: All products are "FOR RESEARCH USE ONLY AND ARE NOT INTENDED FOR DIAGNOSTIC OR THERAPEUTIC USE"

Our Abpromise to you: Quality guaranteed and expert technical support

- Replacement or refund for products not performing as stated on the datasheet
- Valid for 12 months from date of delivery
- Response to your inquiry within 24 hours

- We provide support in Chinese, English, French, German, Japanese and Spanish
- Extensive multi-media technical resources to help you
- We investigate all quality concerns to ensure our products perform to the highest standards

If the product does not perform as described on this datasheet, we will offer a refund or replacement. For full details of the Abpromise, please visit <https://www.abcam.cn/abpromise> or contact our technical team.

Terms and conditions

- Guarantee only valid for products bought direct from Abcam or one of our authorized distributors