

Product datasheet

Anti-Calsequestrin 2 antibody [EPR4227] ab108289

重组 RabMAb

2 References 1 图像

概述

产品名称	Anti-Calsequestrin 2抗体[EPR4227]
描述	兔单克隆抗体[EPR4227] to Calsequestrin 2
宿主	Rabbit
经测试应用	适用于: WB 不适用于: Flow Cyt, ICC/IF, IHC-P or IP
种属反应性	与反应: Mouse, Rat, Human
免疫原	Synthetic peptide within Human Calsequestrin 2 aa 1-100. The exact sequence is proprietary.
阳性对照	Human heart, mouse heart or rat heart lysates
常规说明	

Our RabMAb[®] technology is a patented hybridoma-based technology for making rabbit monoclonal antibodies. For details on our patents, please refer to [RabMab[®] patents](#)

This product is a recombinant rabbit monoclonal antibody.

性能

形式	Liquid
存放说明	Shipped at 4°C. Store at -20°C. Stable for 12 months at -20°C.
存储溶液	pH: 7.20 Preservative: 0.05% Sodium azide Constituents: 0.1% BSA, 40% Glycerol, 9.85% Tris glycine, 50% Tissue culture supernatant
纯度	Tissue culture supernatant
克隆	单克隆
克隆编号	EPR4227
同种型	IgG

应用

Our [Abpromise guarantee](#) covers the use of **ab108289** in the following tested applications.

The application notes include recommended starting dilutions; optimal dilutions/concentrations should be determined by the end user.

应用	Ab评论	说明
----	------	----

WB 1/1000 - 1/10000. Detects a band of approximately 55 kDa (predicted molecular weight: 46 kDa).

应用说明 Is unsuitable for Flow Cyt, ICC/IF, IHC-P or IP.

靶标

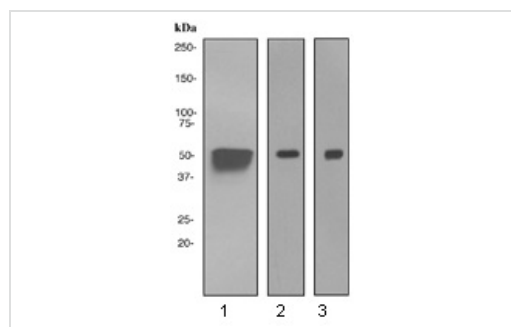
功能 Calsequestrin is a high-capacity, moderate affinity, calcium-binding protein and thus acts as an internal calcium store in muscle. The release of calcium bound to calsequestrin through a calcium release channel triggers muscle contraction. Binds 40 to 50 moles of calcium.

疾病相关 Defects in CASQ2 are the cause of catecholaminergic polymorphic ventricular tachycardia type 2 (CPVT2) [MIM:611938]; also known as stress-induced polymorphic ventricular tachycardia (VTSIP). CPVT2 is an autosomal recessive form of arrhythmogenic disorder characterized by stress-induced, bidirectional ventricular tachycardia that may degenerate into cardiac arrest and cause sudden death.

序列相似性 Belongs to the calsequestrin family.

细胞定位 Sarcoplasmic reticulum lumen. This isoform of calsequestrin occurs in the sarcoplasmic reticulum's terminal cisternae luminal spaces of cardiac and slow skeletal muscle cells.

图片



Western blot - Anti-Calsequestrin 2 antibody
[EPR4227] (ab108289)

All lanes : Anti-Calsequestrin 2 antibody
[EPR4227] (ab108289) at 1/1000 dilution

Lane 1 : Human heart cell lysate

Lane 2 : Mouse heart lysate

Lane 3 : Rat heart lysate

Lysates/proteins at 10 µg per lane.

Secondary

All lanes : HRP labelled goat anti-rabbit at
1/2000 dilution

Predicted band size: 46 kDa

Observed band size: 55 kDa

Please note: All products are "FOR RESEARCH USE ONLY AND ARE NOT INTENDED FOR DIAGNOSTIC OR THERAPEUTIC USE"

Our Abpromise to you: Quality guaranteed and expert technical support

- Replacement or refund for products not performing as stated on the datasheet
- Valid for 12 months from date of delivery
- Response to your inquiry within 24 hours

- We provide support in Chinese, English, French, German, Japanese and Spanish
- Extensive multi-media technical resources to help you
- We investigate all quality concerns to ensure our products perform to the highest standards

If the product does not perform as described on this datasheet, we will offer a refund or replacement. For full details of the Abpromise, please visit <https://www.abcam.cn/abpromise> or contact our technical team.

Terms and conditions

- Guarantee only valid for products bought direct from Abcam or one of our authorized distributors