

Product datasheet

Anti-Calcitonin receptor / CT-R antibody ab11042

★★★★★ 1 Abreviews 15 References 1 图像

概述

产品名称	Anti-Calcitonin receptor / CT-R抗体
描述	兔多克隆抗体to Calcitonin receptor / CT-R
宿主	Rabbit
特异性	ab11042 recognises the calcitonin receptor / CT-R in human, mouse and rat. The calcitonin receptor / CT-R is a seven transmembrane domain cell surface protein which is coupled to G protein messenger systems. This antibody recognises an epitope within the cytoplasmic domain that is common to both C1a and C1b rat isoforms.
经测试应用	适用于: IHC-Fr, IHC-FoFr, IHC-P, WB, ELISA
种属反应性	与反应: Mouse, Rat, Human
免疫原	Synthetic peptide corresponding to Rat Calcitonin receptor/ CT-R aa 476-496. Sequence: KGLPIYICHQEPRNPPVSNN Run BLAST with Run BLAST with
阳性对照	Kidney, cultered osteoclasts.
常规说明	Should this product contain a precipitate we recommend microcentrifugation before use. Previously labelled as Calcitonin receptor

性能

形式	Liquid
存放说明	Shipped at 4°C. Store at +4°C short term (1-2 weeks). Upon delivery aliquot. Store at -20°C or -80°C. Avoid freeze / thaw cycle.
存储溶液	Preservative: 0.09% Sodium azide Constituent: PBS
纯度	Protein A purified
纯化说明	Purified IgG was prepared from whole serum by affinity chromatography.
克隆	多克隆
同种型	IgG

应用

Our [Abpromise guarantee](#) covers the use of **ab11042** in the following tested applications.

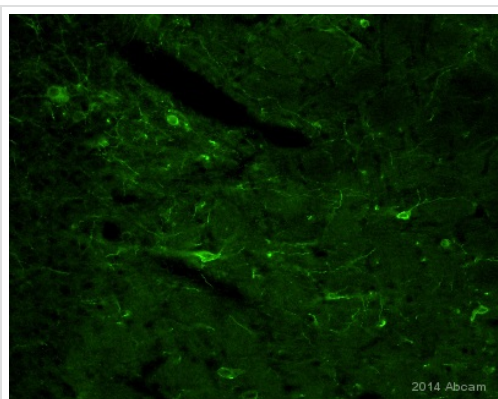
The application notes include recommended starting dilutions; optimal dilutions/concentrations should be determined by the end user.

应用	Ab评论	说明
IHC-Fr		1/10 - 1/50.
IHC-FoFr	★★★★★	Use at an assay dependent concentration.
IHC-P		1/10 - 1/50. We recommend the use of 4% paraformaldehyde fixation, rather than formalin fixation. A sensitive detection system is also recommended. e.g. A catalysed signal amplification system. This product does not require protein digestion pre-treatment This product does not require antigen retrieval using heat treatment prior to staining of paraffin embedded sections.
WB		Use at an assay dependent concentration. Predicted molecular weight: 56.9 kDa.
ELISA		1/10000.

靶标

功能	This is a receptor for calcitonin. The activity of this receptor is mediated by G proteins which activate adenylyl cyclase. The calcitonin receptor is thought to couple to the heterotrimeric guanosine triphosphate-binding protein that is sensitive to cholera toxin.
序列相似性	Belongs to the G-protein coupled receptor 2 family.
细胞定位	Cell membrane.

图片



ab11042 staining Calcitonin receptor in Rat brain tissue sections by Immunohistochemistry (PFA perfusion fixed frozen sections). Tissue samples were fixed by perfusion with paraformaldehyde, permeabilized with 0.3% Triton-X, blocked with 5% serum for 45 minutes at 22°C. The sample was incubated with primary antibody (1/500) at 4°C for 18 hours. An Alexa Fluor® 488-conjugated Donkey anti-rabbit polyclonal (1/500) was used as the secondary antibody

Immunohistochemistry (PFA perfusion fixed frozen sections) - Anti-Calcitonin receptor / CT-R antibody (ab11042)

This image is courtesy of an Abreview submitted by Vaibhav Konanur

Please note: All products are "FOR RESEARCH USE ONLY AND ARE NOT INTENDED FOR DIAGNOSTIC OR THERAPEUTIC USE"

Our Abpromise to you: Quality guaranteed and expert technical support

- Replacement or refund for products not performing as stated on the datasheet
- Valid for 12 months from date of delivery
- Response to your inquiry within 24 hours

- We provide support in Chinese, English, French, German, Japanese and Spanish
- Extensive multi-media technical resources to help you
- We investigate all quality concerns to ensure our products perform to the highest standards

If the product does not perform as described on this datasheet, we will offer a refund or replacement. For full details of the Abpromise, please visit <https://www.abcam.cn/abpromise> or contact our technical team.

Terms and conditions

- Guarantee only valid for products bought direct from Abcam or one of our authorized distributors