

## Product datasheet

# Anti-CKII alpha (phospho T360 + S362) antibody ab119410

★★★★★ 1 Abreviews 2 图像

### 概述

产品名称	Anti-CKII alpha (phospho T360 + S362)抗体
描述	兔多克隆抗体to CKII alpha (phospho T360 + S362)
宿主	Rabbit
特异性	ab119410 detects endogenous levels of Human CKII alpha only when phosphorylated at Threonine 360/Serine 362
经测试应用	适用于: WB
种属反应性	与反应: Mouse, Rat, Human
免疫原	Synthetic peptide conjugated to KLH, surrounding amino acids (VTP <sup>P</sup> PS <sup>P</sup> PL) phosphorylated at threonine 360 and Serine 362 of Human CKII alpha (NP_001894.2).
阳性对照	Recombinant proteins CKII alpha wt, CKII alpha T360A, CKII alpha S362A, CKII alpha T360/S362A phosphorylated by ERK2

### 性能

形式	Liquid
存放说明	Shipped at 4°C. Store at -20°C. Stable for 12 months at -20°C.
存储溶液	pH: 7.40 Preservative: 0.02% Sodium azide Constituents: 49% PBS, 50% Glycerol, 0.88% Sodium chloride Note: (without Mg <sup>2+</sup> and Ca <sup>2+</sup> )
纯度	Immunogen affinity purified
纯化说明	ab119410 was purified by affinity-chromatography using epitope-specific phosphopeptide. The antibody against non-phosphopeptide was removed by chromatography using non-phosphopeptide corresponding to the phosphorylation site.
克隆	多克隆
同种型	IgG

### 应用

Our [Abpromise guarantee](#) covers the use of **ab119410** in the following tested applications.

The application notes include recommended starting dilutions; optimal dilutions/concentrations should be determined by the end user.

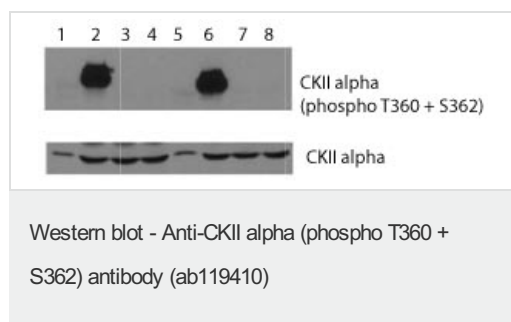
应用	Ab评论	说明
WB	★★★★★	1/1000. Detects a band of approximately 42 kDa (predicted molecular weight: 45 kDa).

## 靶标

**功能** Casein kinases are operationally defined by their preferential utilization of acidic proteins such as caseins as substrates. The alpha and alpha' chains contain the catalytic site. Participates in Wnt signaling. CK2 phosphorylates 'Ser-392' of p53/TP53 following UV irradiation.

**序列相似性** Belongs to the protein kinase superfamily. Ser/Thr protein kinase family. CK2 subfamily. Contains 1 protein kinase domain.

## 图片

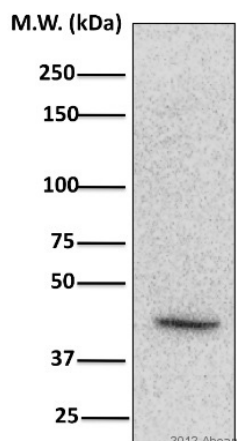


**All lanes :** Anti-CKII alpha (phospho T360 + S362) antibody (ab119410) at 1/1000 dilution

- Lane 1 :** CKII alpha
- Lane 2 :** CKII alpha + ERK2
- Lane 3 :** CKII alpha T360A
- Lane 4 :** CKII alpha T360A + ERK2
- Lane 5 :** CKII alpha S362A
- Lane 6 :** CKII alpha S362A + ERK2
- Lane 7 :** CKII alpha T360/S362A
- Lane 8 :** CKII alpha T360/S362A + ERK2

**Predicted band size:** 45 kDa

Lower panel stained with CKII alpha antibody as a loading control.



Western blot - Anti-CKII alpha (phospho T360 + S362) antibody (ab119410)

This image is courtesy of an Abreview submitted by Dr Tomar Ghansah

Anti-CKII alpha (phospho T360 + S362) antibody (ab119410) at 1/1000 dilution + C57BL/6 Mouse splenocyte whole cell lysate at 40 µg

#### Secondary

HRP-conjugated goat anti-rabbit monoclonal IgG at 1/1000 dilution

Developed using the ECL technique.

Performed under reducing conditions.

**Predicted band size:** 45 kDa

**Observed band size:** 45 kDa

**Exposure time:** 1 minute

Blocked with 5% milk for 1 hour at 25°C

**Please note:** All products are "FOR RESEARCH USE ONLY AND ARE NOT INTENDED FOR DIAGNOSTIC OR THERAPEUTIC USE"

### Our Abpromise to you: Quality guaranteed and expert technical support

- Replacement or refund for products not performing as stated on the datasheet
- Valid for 12 months from date of delivery
- Response to your inquiry within 24 hours
- We provide support in Chinese, English, French, German, Japanese and Spanish
- Extensive multi-media technical resources to help you
- We investigate all quality concerns to ensure our products perform to the highest standards

If the product does not perform as described on this datasheet, we will offer a refund or replacement. For full details of the Abpromise, please visit <https://www.abcam.cn/abpromise> or contact our technical team.

### Terms and conditions

- Guarantee only valid for products bought direct from Abcam or one of our authorized distributors