

## Product datasheet

# Anti-CD4 antibody [MEM-241] (PerCP) ab65951

★★★★★ 4 Abreviews 2 References 2 图像

### 概述

产品名称	Anti-CD4抗体[MEM-241] (PerCP)
描述	小鼠单克隆抗体[MEM-241] to CD4 (PerCP)
宿主	Mouse
偶联物	PerCP. Ex: 482nm, Em: 675nm
经测试应用	适用于: Flow Cyt
种属反应性	与反应: Human, Cynomolgus monkey
免疫原	Two N terminal domains of human CD4 fused to human IgG1 Fc
常规说明	The purified antibody is conjugated with Peridinin-chlorophyll-protein complex (PerCP) under optimum conditions.

### 性能

形式	Liquid
存放说明	Shipped at 4°C. Store at +4°C.
存储溶液	Preservative: 15mM Sodium Azide Constituents: 0.2% BSA, PBS
纯度	Size exclusion
纯化说明	purity >95% by SDS-PAGE.
克隆	单克隆
克隆编号	MEM-241
同种型	IgG1

### 应用

Our [Abpromise guarantee](#) covers the use of **ab65951** in the following tested applications.

The application notes include recommended starting dilutions; optimal dilutions/concentrations should be determined by the end user.

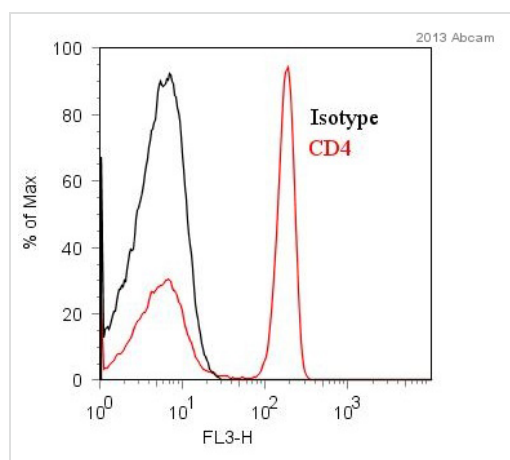
应用	Ab评论	说明
----	------	----

应用	Ab评论	说明
Flow Cyt	★★★★★	Use 10µl for 10 <sup>6</sup> cells. <a href="#">ab118658</a> - Mouse monoclonal IgG1, is suitable for use as an isotype control with this antibody.

## 靶标

<b>功能</b>	Accessory protein for MHC class-II antigen/T-cell receptor interaction. May regulate T-cell activation. Induces the aggregation of lipid rafts.
<b>序列相似性</b>	Contains 3 Ig-like C2-type (immunoglobulin-like) domains. Contains 1 Ig-like V-type (immunoglobulin-like) domain.
<b>翻译后修饰</b>	Palmitoylation and association with LCK contribute to the enrichment of CD4 in lipid rafts.
<b>细胞定位</b>	Cell membrane. Localizes to lipid rafts. Removed from plasma membrane by HIV-1 Nef protein that increases clathrin-dependent endocytosis of this antigen to target it to lysosomal degradation. Cell surface expression is also down-modulated by HIV-1 Envelope polyprotein gp160 that interacts with, and sequesters CD4 in the endoplasmic reticulum.

## 图片

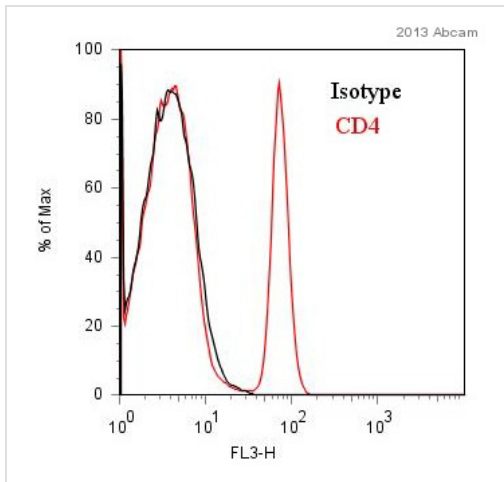


Flow cytometry analysis of Human whole blood after red blood cell lysis, staining CD4 with [ab65951](#). Cells were fixed with paraformaldehyde. The sample was incubated with the primary antibody (1/100 in 1% BSA in PBS) for 1 hour at 4°C.

**Gating Strategy:** Live lymphocytes

Flow Cytometry - Anti-CD4 antibody [MEM-241]  
(PerCP) ([ab65951](#))

This image is courtesy of an anonymous Abreview



Flow Cytometry - Anti-CD4 antibody [MEM-241]  
(PerCP) (ab65951)

This image is courtesy of an anonymous Abreview

Flow cytometry analysis of Cynomolgus monkey whole blood after red blood cell lysis, staining CD4 with ab65951. Cells were fixed with paraformaldehyde. The sample was incubated with the primary antibody (1/100 in 1% BSA in PBS) for 1 hour at 4°C.

**Gating Strategy:** Live lymphocytes

**Please note:** All products are "FOR RESEARCH USE ONLY AND ARE NOT INTENDED FOR DIAGNOSTIC OR THERAPEUTIC USE"

### Our Abpromise to you: Quality guaranteed and expert technical support

- Replacement or refund for products not performing as stated on the datasheet
- Valid for 12 months from date of delivery
- Response to your inquiry within 24 hours
- We provide support in Chinese, English, French, German, Japanese and Spanish
- Extensive multi-media technical resources to help you
- We investigate all quality concerns to ensure our products perform to the highest standards

If the product does not perform as described on this datasheet, we will offer a refund or replacement. For full details of the Abpromise, please visit <https://www.abcam.cn/abpromise> or contact our technical team.

### Terms and conditions

- Guarantee only valid for products bought direct from Abcam or one of our authorized distributors