

Product datasheet

Anti-CD15 antibody [MCS-1], prediluted (CF405M) ab123633

★★★★★ 3 Abreviews 2 图像

概述

产品名称	Anti-CD15抗体[MCS-1], prediluted (CF405M)
描述	小鼠单克隆抗体[MCS-1] to CD15, prediluted (CF405M)
宿主	Mouse
偶联物	CF405M. Ex: 408nm, Em: 452nm
经测试应用	适用于: Flow Cyt
种属反应性	与反应: Human
免疫原	White blood cells
阳性对照	Normal Human Peripheral Blood
常规说明	CF405M (Abs/Em Max: 408/450nm). Direct replacement for Pacific Blue dye [®] , BD Horizon [™] V450.

性能

形式	Liquid
存放说明	Shipped at 4°C. Store at +4°C.
存储溶液	pH: 7.40 Preservative: 0.09% Sodium azide Constituent: 99% PBS Note: pH +/-0.2
纯度	Immunogen affinity purified
克隆	单克隆
克隆编号	MCS-1
同种型	IgG3

应用

Our [Abpromise guarantee](#) covers the use of **ab123633** in the following tested applications.

The application notes include recommended starting dilutions; optimal dilutions/concentrations should be determined by the end user.

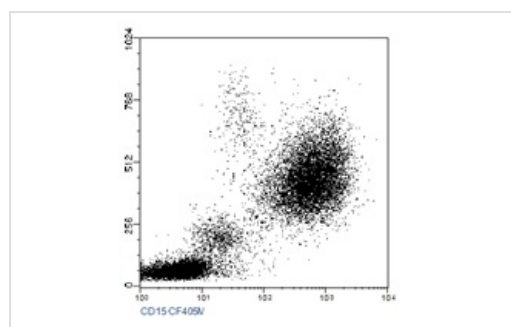
应用	Ab评论	说明
Flow Cyt	★★★★★	Use 5µl for 10 ⁶ cells. ab126029 - Mouse monoclonal IgG3, is suitable for use as an isotype control with this antibody.

靶标

相关性 CD15 is a carbohydrate adhesion molecule (and not a protein) that mediates phagocytosis and chemotaxis. Synthesis is directed by FUT4 in lymphoid cells and mature granulocytes, and by FUT9 in promyelocytes and monocytes.

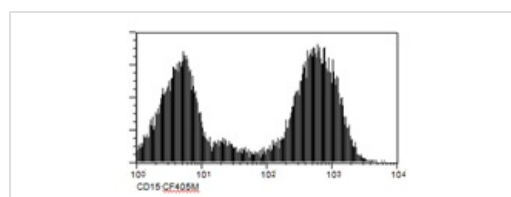
细胞定位 Golgi Apparatus; Membrane-bound form in trans cisternae of Golgi.

图片



Flow cytometry analysis of CD15 expression in Normal Peripheral Blood from a Human Donor using [ab123633](#) at 5 µl/10⁶ cells.

Flow Cytometry - Anti-CD15 antibody [MCS-1],
prediluted (CF405M) ([ab123633](#))



Flow cytometry analysis of CD15 expression in Normal Peripheral Blood from a Human Donor using [ab123633](#) at 5 µl/10⁶ cells.

Flow Cytometry - Anti-CD15 antibody [MCS-1],
prediluted (CF405M) ([ab123633](#))

Please note: All products are "FOR RESEARCH USE ONLY AND ARE NOT INTENDED FOR DIAGNOSTIC OR THERAPEUTIC USE"

Our Abpromise to you: Quality guaranteed and expert technical support

- Replacement or refund for products not performing as stated on the datasheet
- Valid for 12 months from date of delivery
- Response to your inquiry within 24 hours

- We provide support in Chinese, English, French, German, Japanese and Spanish
- Extensive multi-media technical resources to help you
- We investigate all quality concerns to ensure our products perform to the highest standards

If the product does not perform as described on this datasheet, we will offer a refund or replacement. For full details of the Abpromise, please visit <https://www.abcam.cn/abpromise> or contact our technical team.

Terms and conditions

- Guarantee only valid for products bought direct from Abcam or one of our authorized distributors