


Product datasheet

Anti-CCT6A antibody ab110905

3 图像

概述

产品名称	Anti-CCT6A抗体
描述	兔多克隆抗体to CCT6A
宿主	Rabbit
经测试应用	适用于: WB, ICC/IF, IHC-P
种属反应性	与反应: Human 预测可用于: Mouse, Rat 
免疫原	Synthetic peptide derived from an internal sequence of Human CCT6A.
阳性对照	Human breast carcinoma tissue; HepG2 cell extracts This antibody gave a positive result when used in the following formaldehyde fixed cell lines: HepG2

性能

形式	Liquid
存放说明	Shipped at 4°C. Store at -20°C. Stable for 12 months at -20°C.
存储溶液	pH: 7.40 Preservative: 0.02% Sodium azide Constituents: 49.1% PBS, 0.88% Sodium chloride, 50% Glycerol Note: PBS (without Mg ²⁺ and Ca ²⁺)
纯度	Immunogen affinity purified
纯化说明	ab110905 was affinity purified from rabbit antiserum by affinity chromatography using epitope specific immunogen.
克隆	多克隆
同种型	IgG

应用

Our [Abpromise guarantee](#) covers the use of **ab110905** in the following tested applications.

The application notes include recommended starting dilutions; optimal dilutions/concentrations should be determined by the end user.

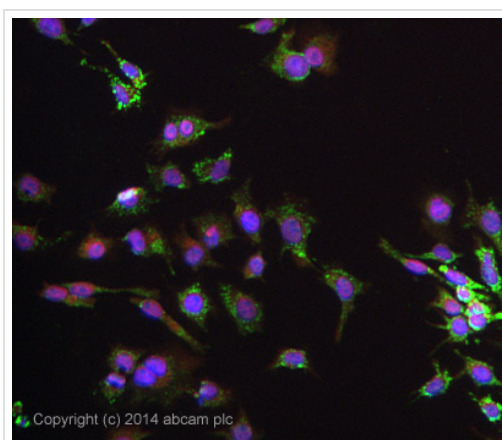
应用	Ab评论	说明
WB		1/500 - 1/1000. Predicted molecular weight: 58 kDa.
ICC/IF		Use a concentration of 10 µg/ml.
IHC-P		1/50 - 1/100. Perform heat mediated antigen retrieval with citrate buffer pH 6 before commencing with IHC staining protocol.

靶标

相关性 CCT6A is a molecular chaperone that is member of the chaperonin containing TCP1 complex (CCT), also known as the TCP1 ring complex (TRiC). This complex consists of two identical stacked rings, each containing eight different proteins. Unfolded polypeptides enter the central cavity of the complex and are folded in an ATP-dependent manner. The complex folds various proteins, including actin and tubulin. Alternate transcriptional splice variants of CCT6A, encoding different isoforms, have been characterized.

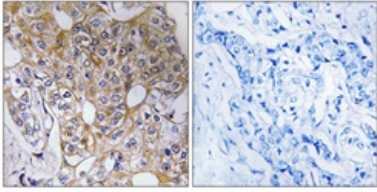
细胞定位 Cytoplasmic

图片



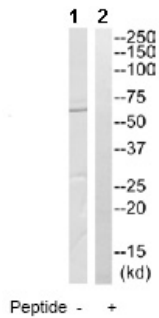
Immunocytochemistry/ Immunofluorescence - Anti-CCT6A antibody (ab110905)

ICC/IF image of ab110905 stained HepG2 cells. The cells were 4% formaldehyde fixed (10 min) and then incubated in 1%BSA / 10% normal goat serum / 0.3M glycine in 0.1% PBS-Tween for 1h to permeabilise the cells and block non-specific protein-protein interactions. The cells were then incubated with the antibody ab110905 at 10µg/ml overnight at +4°C. The secondary antibody (pseudo-colored green) was Alexa Fluor® 488 goat anti- rabbit ([ab150081](#)) IgG (H+L) preadsorbed, used at a 1/1000 dilution for 1h. Alexa Fluor® 594 WGA was used to label plasma membranes (pseudo-colored red) at a 1/200 dilution for 1h at room temperature. DAPI was used to stain the cell nuclei (pseudo-colored blue) at a concentration of 1.43µM for 1 hour at room temperature.



Immunohistochemistry (Formalin/PFA-fixed paraffin-embedded sections) - Anti-CCT6A antibody (ab110905)

ab110905, at a 1/50 dilution, staining CCT6A in paraffin embedded Human breast carcinoma tissue by Immunohistochemistry. The image on the right is from tissue treated with the synthesized peptide.



Western blot - Anti-CCT6A antibody (ab110905)

All lanes : Anti-CCT6A antibody (ab110905) at 1/500 dilution

Lane 1 : HepG2 cell extracts

Lane 2 : HepG2 cell extracts with immunizing peptide at 10 µg

Lysates/proteins at 30 µg per lane.

Predicted band size: 58 kDa

Please note: All products are "FOR RESEARCH USE ONLY AND ARE NOT INTENDED FOR DIAGNOSTIC OR THERAPEUTIC USE"

Our Abpromise to you: Quality guaranteed and expert technical support

- Replacement or refund for products not performing as stated on the datasheet
- Valid for 12 months from date of delivery
- Response to your inquiry within 24 hours
- We provide support in Chinese, English, French, German, Japanese and Spanish
- Extensive multi-media technical resources to help you
- We investigate all quality concerns to ensure our products perform to the highest standards

If the product does not perform as described on this datasheet, we will offer a refund or replacement. For full details of the Abpromise, please visit <https://www.abcam.cn/abpromise> or contact our technical team.

Terms and conditions

- Guarantee only valid for products bought direct from Abcam or one of our authorized distributors